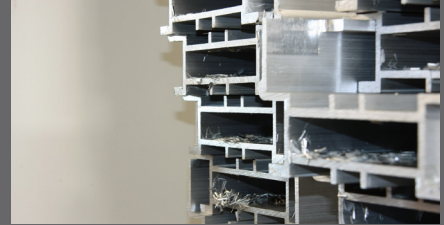


BLOCK&BLOCK
Professional Lifters



Calidad, seguridad y servicio

Ofrecemos a nuestros clientes la mejor calidad, seguridad y servicio.

- Calidad: Nuestra gran experiencia nos proporciona el conocimiento necesario para fabricar un producto de alta calidad.
- Seguridad: La seguridad del usuario final está totalmente garantizada gracias a todos los mecanismos de seguridad.
- Servicio: Contamos con un equipo de profesionales especializados en el mantenimiento y reparación de nuestros productos.

Vocación Internacional

Nuestros productos cumplen con los estándares de seguridad. Nuestras torres están certificadas según la Normativa Europea (Directiva 2006/42/CE y normas BGV C1 y BGG 912).

Fabricantes desde hace más de 20 años

Somos una empresa con más de 20 años de experiencia en la fabricación y distribución de productos de gran calidad.

Fabricamos en España, garantizando la eficiencia, seguridad y durabilidad de todos nuestros productos. Nuestra condición de fabricantes nos permite mejorar continuamente los procesos y detectar cualquier problema durante la fabricación. Además, disponemos de técnicas especiales para poder ampliar la vida a la mayor parte de las piezas metálicas, estudiando en un primer lugar el metal y posteriormente sus condiciones.

Quality, safety and service

We offer the best quality, safety guarantee and service to our customers.

- Quality: Our experience enables us to produce high quality products.
- Security: The personal safety of the users is fully guaranteed by our security mechanisms.
- Service: We are a specialized team that is able to offer maintenance and repair services to our products.

Internacional Focus

Our products meet international safety standards. Our towers are certified according to European Regulations (Directive 2006/42 / EC and Rules BGV C1 y BGG 912).

Manufacturers with more than 20 years of experience

We have more than 20 years of experience in the production and distribution of high quality stage structure-related products.

We manufacture in Spain, ensuring the efficiency, safety and durability of our products under European standards. Being manufacturers allow us to continuously improve processes. We also have special techniques that extend the life span of most metal parts.

Made in Spain

OMEGA 30

FRONTAL LOAD

Characteristics

■ Max Load: 220 kg.	■ Max height: 5 meters.	■ Weight: 97 kg.
■ Min height: 1,57 meters.	■ Winch: AL-KO 900 Compac	■ Loading surface: 50 x 45 cm.

Manufacturing materials: Carbon steel profile type S275J0H manufactured according to the norms EN 10219 y EN10305.5

Aluminium alloy profile 6082/T6 manufactured according to the normative EN15088, EN755, EN12020-2, EN 573

Certificado de fabricación/
Manufacturing certificate

Certificado prueba de carga/
Load test certificate



Top detail

Description

It reaches a maximum height of 5 meters through 4 aluminium profile stretches, which provide a maximum load of 220kg. The security triggers allow the sections to be blocked at different heights. The adjustable legs and the spindles of these ensure a good anchorage and a perfect stability.

Description

Alcanza los 5 metros de altura mediante 4 tramos de perfil de aluminio que proporcionan una carga máxima de 220kg. Consta de gatillos de seguridad para el bloqueo de los tramos en diferentes alturas. Las patas regulables y los husillos de estas aseguran un buen anclaje y una perfecta estabilidad.

FRONTAL LOAD



Top detail

Characteristics

■ Max Load: 200 kg.	■ Max height: 6,25 meters.	■ Weight: 110 kg.
■ Min height: 1,59 meters.	■ Winch: AL-KO 900 Compac	■ Loading surface: 50 x 45 cm

Manufacturing materials: Carbon steel profile tipe S275J0H manufactured according to the norms EN 10219 y EN10305.5

Aluminium alloy profile 6082/T6 manufactured according to the normative EN15088, EN755, EN12020-2, EN 573

Certificado de fabricación/
Manufacturing certificate

Certificado prueba de carga/
Load test certificate



Description

It reaches a maximum height of 6,25 meters through 5 aluminium profile stretches, which provide a maximum load of 200kg. The security triggers allow the sections to be blocked at different heights. The adjustable legs and the spindles of these ensure a good anchorage and a perfect stability.

Description

Alcanza los 6,25 metros de altura mediante 5 tramos de perfil de aluminio que proporcionan una carga máxima de 200kg. Consta de gatillos de seguridad para el bloqueo de los tramos en diferentes alturas. Las patas regulables y los husillos de estas aseguran un buen anclaje y una perfecta estabilidad.

Characteristics

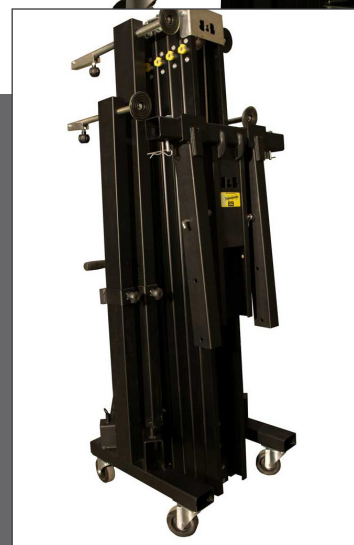
■	Max Load: 300 kg.	■	Max height: 5,10 meters	■	Weight: 131 kg.
■	Min height: 1,67 meters.	■	Winch: AL-KO 901 Plus	■	Loading surface: 55 x 54 cm.

Manufacturing materials: Carbon steel profile type S275J0H manufactured according to the norms EN 10219 y EN10305.5

Aluminium alloy profile 6082/T6 manufactured according to the normative EN15088, EN755, EN12020-2, EN 573

Certificado de fabricación/
Manufacturing certificate

Certificado prueba de carga/
Load test certificate



Top detail

Description

It reaches a maximum height of 5,1 meters through 4 aluminium profile stretches, which provide a maximum load of 300kg. The security triggers allow the sections to be blocked at different heights and a safety automatic internal braking system. The adjustable legs and the spindles of these ensure a good anchorage and a perfect stability.

Description

Alcanza los 5,1 metros de altura mediante 4 tramos de perfil de aluminio que proporcionan una carga máxima de 300kg. Consta de gatillos de seguridad para el bloqueo de los tramos en diferentes alturas y un sistema de frenado de seguridad automático interno. Las patas regulables y los husillos de estas aseguran un buen anclaje y una perfecta estabilidad.

FRONTAL LOAD



Top detail

Characteristics

■	Max Load: 270 kg.	■	Max height: 6,20 meters.	■	Weight: 144 kg.
■	Min height: 1,68 meters.	■	Winch: AL-KO 901 Plus	■	Loading surface: 55 x 54 cm

Manufacturing materials: Carbon steel profile tipe S275J0H manufactured according to the norms EN 10219 y EN10305.5

Aluminium alloy profile 6082/T6 manufactured according to the normative EN15088, EN755, EN12020-2, EN 573

Certificado de fabricación/
Manufacturing certificate

Certificado prueba de carga/
Load test certificate



Description

It reaches a maximum height of 6,20 meters through 5 aluminium profile stretches, which provide a maximum load of 270kg. The security triggers allow the sections to be blocked at different heights and a safety automatic internal braking system. The adjustable legs and the spindles of these ensure a good anchorage and a perfect stability.

Description

Alcanza los 6,20 metros de altura mediante 5 tramos de perfil de aluminio que proporcionan una carga máxima de 270kg. Consta de gatillos de seguridad para el bloqueo de los tramos en diferentes alturas y un sistema de frenado de seguridad automático interno. Las patas regulables y los husillos de estas aseguran un buen anclaje y una perfecta estabilidad.

GAMMA 50

FRONTAL LOAD

Characteristics

■ Max Load: 300 kg.	■ Max height: 6,20 meters	■ Weight: 146 kg.
■ Min height: 1,90 meters.	■ Winch: AL-KO 901 PLUS	■ Loading surface: 54 x 54 cm

Manufacturing materials: Carbon steel profile type S275J0H manufactured according to the norms EN 10219 y EN10305.5

Aluminium alloy profile 6082/T6 manufactured according to the normative EN15088, EN755, EN12020-2, EN 573

Certificado de fabricación/
Manufacturing certificate

Certificado prueba de carga/
Load test certificate



Top detail

Description

It reaches a maximum height of 6,20 meters through 4 aluminium profile stretches, which provide a maximum load of 300kg. The security triggers allow the sections to be blocked at different heights, and a safety automatic internal braking system. The adjustable legs and spindles ensure a good anchorage and a perfect stability.

Description

Alcanza los 6,20 metros de altura mediante 4 tramos de perfil de aluminio que proporcionan una carga máxima de 300 kg. Consta de gatillos de seguridad para el bloqueo de los tramos en diferentes alturas y un sistema de frenado de seguridad automático interno. Las patas regulables y los husillos de estas, aseguran un buen anclaje y una perfecta estabilidad.

FRONTAL LOAD



Top detail

Characteristics

■	Max Load: 270 kg.	■	Max height: 7,60 meters.	■	Weight: 152 kg.
■	Min height: 1,94 meters.	■	Winch: AL-KO 901 PLUS	■	Loading surface: 54 x 54 cm.

Manufacturing materials: Carbon steel profile tipe S275J0H manufactured according to the norms EN 10219 y EN10305.5

Aluminium alloy profile 6082/T6 manufactured according to the normative EN15088, EN755, EN12020-2, EN 573

Certificado de fabricación/
Manufacturing certificate

Certificado prueba de carga/
Load test certificate



Description

It reaches a maximum height of 7,60 meters through 5 aluminium profile stretches, which provide a maximum load of 270kg. The security triggers allow the sections to be blocked at different heights, and a safety automatic internal braking system. The adjustable legs and spindles ensure a good anchorage and a perfect stability.

Description

Alcanza los 7,60 metros de altura mediante 5 tramos de perfil de aluminio que proporcionan una carga máxima de 270 kg. Consta de gatillos de seguridad para el bloqueo de los tramos en diferentes alturas y un sistema de frenado de seguridad automático interno. Las patas regulables y los husillos de estas, aseguran un buen anclaje y una perfecta estabilidad.

ALFA 50

FRONTAL LOAD

Characteristics

■ Max Load: 550 kg.	■ Max height: 5,10 meters.	■ Weight: 207 kg.
■ Min height: 1,66 meters	■ Winch: AL-KO 1201 PLUS	■ Loading surface: 70 x 52 cm.

Manufacturing materials: Carbon steel profile type S275J0H manufactured according to the norms EN 10219 y EN10305.5

Aluminium alloy profile 6082/T6 manufactured according to the normative EN15088, EN755, EN12020-2, EN 573

Certificado de fabricación/
Manufacturing certificate

Certificado prueba de carga/
Load test certificate



Top detail

Description

It reaches a maximum height of 5,10 meters through 4 aluminium profile stretches, which provide a maximum load of 550kg. The security triggers allow the sections to be blocked at different heights, and a safety automatic internal braking system. The adjustable legs and spindles ensure a good anchorage and a perfect stability.

Description

Alcanza los 5,10 metros de altura mediante 4 tramos de perfil de aluminio que proporcionan una carga máxima de 550 kg. Consta de gatillos de seguridad para el bloqueo de los tramos en diferentes alturas y un sistema de frenado de seguridad automático interno. Las patas regulables y los husillos de estas, aseguran un buen anclaje y una perfecta estabilidad.

FRONTAL LOAD



Top detail

Characteristics

■ Max Load: 450 kg.	■ Max height: 6,20 meters.	■ Weight: 227 kg.
■ Min height: 1,67 meters.	■ Winch: AL-KO 1201 PLUS	■ Loading surface: 70 x 52 cm.

Manufacturing materials: Carbon steel profile tipe S275J0H manufactured according to the norms EN 10219 y EN10305.5

Aluminium alloy profile 6082/T6 manufactured according to the normative EN15088, EN755, EN12020-2, EN 573

Certificado de fabricación/
Manufacturing certificate

Certificado prueba de carga/
Load test certificate



Description

It reaches a maximum height of 6,20 meters through 5 aluminium profile stretches, which provide a maximum load of 450kg. The security triggers allow the sections to be blocked at different heights, and a safety automatic internal braking system. The adjustable legs and spindles ensure a good anchorage and a perfect stability.

Description

Alcanza los 6,20 metros de altura mediante 5 tramos de perfil de aluminio que proporcionan una carga máxima de 450 kg. Consta de gatillos de seguridad para el bloqueo de los tramos en diferentes alturas y un sistema de frenado de seguridad automático interno. Las patas regulables y los husillos de estas, aseguran un buen anclaje y una perfecta estabilidad.

ALFA 90

FRONTAL LOAD

Characteristics

Max Load: 600 kg.	Max height: 6,5 meters.	Weight: 245 kg.
Min height: 2 meters.	Winch: AL-KO 1201 PLUS	Loading surface: 77 x 54 cm.

Manufacturing materials: Carbon steel profile type S275J0H manufactured according to the norms EN 10219 y EN10305.5

Aluminium alloy profile 6082/T6 manufactured according to the normative EN15088, EN755, EN12020-2, EN 573

Certificado de fabricación/
Manufacturing certificate

Certificado prueba de carga/
Load test certificate



Top detail

Description

It reaches a maximum height of 6,50 meters through 5 aluminium profile stretches, which provide a maximum load of 600kg. The security triggers allow the sections to be blocked at different heights, and a safety automatic internal braking system. The adjustable legs and spindles ensure a good anchorage and a perfect stability.

Description

Alcanza los 6,50 metros de altura mediante 5 tramos de perfil de aluminio que proporcionan una carga máxima de 600 kg. Consta de gatillos de seguridad para el bloqueo de los tramos en diferentes alturas y un sistema de frenado de seguridad automático interno. Las patas regulables y los husillos de estas, aseguran un buen anclaje y una perfecta estabilidad.

FRONTAL LOAD



Top detail

Characteristics

■ Max Load: 400 kg.	■ Max height: 8 meters.	■ Weight: 268 kg.
■ Min height: 2,01 meters	■ Winch: AL-KO 1201 PLUS	■ Loading surface: 77 x 52 cm.

Manufacturing materials: Carbon steel profile type S275J0H manufactured according to the norms EN 10219 y EN10305.5

Aluminium alloy profile 6082/T6 manufactured according to the normative EN15088, EN755, EN12020-2, EN 573

Certificado de fabricación/
Manufacturing certificate

Certificado prueba de carga/
Load test certificate



Description

It reaches a maximum height of 8 meters through 5 aluminium profile stretches, which provide a maximum load of 400kg. The security triggers allow the sections to be blocked at different heights, and a safety automatic internal braking system. The adjustable legs and spindles ensure a good anchorage and a perfect stability.

Description

Alcanza los 8 metros de altura mediante 5 tramos de perfil de aluminio que proporcionan una carga máxima de 400 kg. Consta de gatillos de seguridad para el bloqueo de los tramos en diferentes alturas y un sistema de frenado de seguridad automático interno. Las patas regulables y los husillos de estas, aseguran un buen anclaje y una perfecta estabilidad.

Characteristics

■	Max Load: 120 kg.	■	Max height: 4 meters.	■	Weight: 32 kg.
■	Min height: 1,57 meters	■	Winch: AL-KO 351 PLUS	■	Insertion: 35 mm. Male

Manufacturing materials: Carbon steel profile type S275J0H manufactured according to the norms EN 10219 y EN10305.5



Top detail

Certificado de fabricación/
Manufacturing certificate

Certificado prueba de carga/
Load test certificate



Description

It reaches a maximum height of 4 meters through 3 telescopic carbon steel sections which provide a maximum load is 120kg. The security triggers are ready to block different sections at different heights. The adjustable legs and the spindles of these ensure a good anchorage and a perfect stability.

Description

Alcanza los 4 metros de altura mediante 3 tramos telescópicos de acero al carbono que además proporcionan una carga máxima de 120kg. Consta de gatillos de seguridad para el bloqueo de los tramos en diferentes alturas. Las patas regulables y los husillos de estas aseguran un buen anclaje y una perfecta estabilidad.

TELESCOPIC



Top detail

Characteristics

■	Max Load: 150 kg.	■	Max height: 4,7 meters.	■	Weight: 36 kg.
■	Min height: 1,49 meters	■	Winch: AL-KO 351 PLUS	■	Insertion: 35 mm. Male

Manufacturing materials: Carbon steel profile tipe S275J0H manufactured according to the norms EN 10219 y EN10305.5

Certificado de fabricación/
Manufacturing certificate

Certificado prueba de carga/
Load test certificate



Description

It reaches a maximum height of 4,7 meters through 4 telescopic carbon steel sections which provide a maximum load is 150kg. The security triggers are ready to block different sections at different heights. The adjustable legs and the spindles of these ensure a good anchorage and a perfect stability.

Description

Alcanza los 4,7 metros de altura mediante 4 tramos telescópicos de acero al carbono que además proporcionan una carga máxima de 150kg. Consta de gatillos de seguridad para el bloqueo de los tramos en diferentes alturas. Las patas regulables y los husillos de estas aseguran un buen anclaje y una perfecta estabilidad.

Characteristics

■	Max Load: 120 kg.	■	Max height: 5 meters.	■	Weight: 35 kg.
■	Min height: 1,90 meters.	■	Winch: AL-KO 351 PLUS	■	Insertion: 35 mm. Male

Manufacturing materials: Carbon steel profile type S275J0H manufactured according to the norms EN 10219 y EN10305.5



Top detail

Certificado de fabricación/
Manufacturing certificate

Certificado prueba de carga/
Load test certificate



Description

It reaches the 5 meters of height By means of 3 telescopic carbon steel stretches, which provide a maximum load of 120kg. It features security triggers to block the diferent stretches at different heights. The adjustable legs and the spindles of these ensure a good anchorage and perfect stability.

Description

Alcanza los 5 metros de altura mediante 3 tramos telescópicos de acero al carbono que además proporcionan una carga máxima de 120kg. Consta de gatillos de seguridad para el bloqueo de los tramos en diferentes alturas. Las patas regulables y los husillos de estas aseguran un buen anclaje y una perfecta estabilidad.

TELESCOPIC



Top detail

Characteristics



Max Load:
160 kg.



Max height:
5,3 meters.



Weight:
45 kg.



Min height:
1,70 meters.



Winch:
AL-KO
351 PLUS



Insertion:
35 mm.
Male

Manufacturing materials: Carbon steel profile tipe S275J0H manufactured according to the norms EN 10219 y EN10305.5

Certificado de fabricación/
Manufacturing certificate

Certificado prueba de carga/
Load test certificate



Description

It reaches the 5,3 meters of height By means of 4 telescopic carbon steel stretches, which provide a maximum load of 160kg.

It features security triggers to block the diferent stretches at different heights. The adjustable legs and the spindles of these ensure a good anchorage and perfect stability.

Description

Alcanza los 5,3 metros de altura mediante 4 tramos telescópicos de acero al carbono que además proporcionan una carga máxima de 160kg. Consta de gatillos de seguridad para el bloqueo de los tramos en diferentes alturas. Las patas regulables y los husillos de estas aseguran un buen anclaje y una perfecta estabilidad.

BETA 50

TELESCOPIC

Characteristics

■	Max Load: 220 kg.	■	Max height: 5,3 meters.	■	Weight: 72 kg.
■	Min height: 1,70 meters.	■	Winch: AL-KO 900 Compac	■	Insertion: 38 mm. Male

Manufacturing materials: Carbon steel profile tube S275J0H manufactured according to the norms EN 10219 y EN10305.5



Top detail

Certificado de fabricación/
Manufacturing certificate

Certificado prueba de carga/
Load test certificate



Description

It reaches the 5,3 meters of height By means of 4 telescopic carbon steel stretches, which provide a maximum load of 220kg. It features security triggers to block the different stretches at different heights. The adjustable legs and the spindles of these ensure a good anchorage and perfect stability.

Description

Alcanza los 5,3 metros de altura mediante 4 tramos telescópicos de acero al carbono que además proporcionan una carga máxima de 220kg. Consta de gatillos de seguridad para el bloqueo de los tramos en diferentes alturas. Las patas regulables y los husillos de estas aseguran un buen anclaje y una perfecta estabilidad.

TELESCOPIC



Top detail

Characteristics

- Max Load: 230 kg.
- Max height: 6,5 meters.
- Weight: 93 kg.
- Min height: 1,80 meters
- Winch: AL-KO 900 Compac
- Insertion: 38 mm. Male

Manufacturing materials: Carbon steel profile tipe S275J0H manufactured according to the norms EN 10219 y EN10305.5

Certificado de fabricación/
Manufacturing certificate

Certificado prueba de carga/
Load test certificate



Description

It reaches the 6,5 meters of height By means of 5 telescopic carbon steel stretches, which provide a maximum load of 230kg. It features security triggers to block the diferent stretches at different heights. The adjustable legs and the spindles of these ensure a good anchorage and perfect stability.

Description

Alcanza los 6,5 metros de altura mediante 5 tramos telescópicos de acero al carbono que además proporcionan una carga máxima de 230kg. Consta de gatillos de seguridad para el bloqueo de los tramos en diferentes alturas. Las patas regulables y los husillos de estas aseguran un buen anclaje y una perfecta estabilidad.

BETA 80

TELESCOPIC

Characteristics

■ Max Load: 270 kg.	■ Max height: 5,3 meters.	■ Weight: 95 kg.
■ Min height: 1,74 meters.	■ Winch: AL-KO 900 Compac	■ Insertion: 50 mm. Male

Manufacturing materials: Carbon steel profile tube S275J0H manufactured according to the norms EN 10219 y EN10305.5

Certificado de fabricación/
Manufacturing certificate

Certificado prueba de carga/
Load test certificate



Top detail

Description

It reaches the 5,3 meters of height By means of 4 telescopic carbon steel stretches, which provide a maximum load of 270kg. It features security triggers to block the different stretches at different heights. The adjustable legs and the spindles of these ensure a good anchorage and perfect stability.

Description

Alcanza los 5,3 metros de altura mediante 4 tramos telescópicos de acero al carbono que además proporcionan una carga máxima de 270kg. Consta de gatillos de seguridad para el bloqueo de los tramos en diferentes alturas. Las patas regulables y los husillos de estas aseguran un buen anclaje y una perfecta estabilidad.

TELESCOPIC



Top detail

Characteristics

- Max Load: 300 kg.
- Max height: 6,6 meters.
- Weight: 132 kg.
- Min height: 1,84 meters.
- Winch: AL-KO 901 Plus
- Insertion: 50 mm. Male

Manufacturing materials: Carbon steel profile tipe S275J0H manufactured according to the norms EN 10219 y EN10305.5

Certificado de fabricación/
Manufacturing certificate

Certificado prueba de carga/
Load test certificate

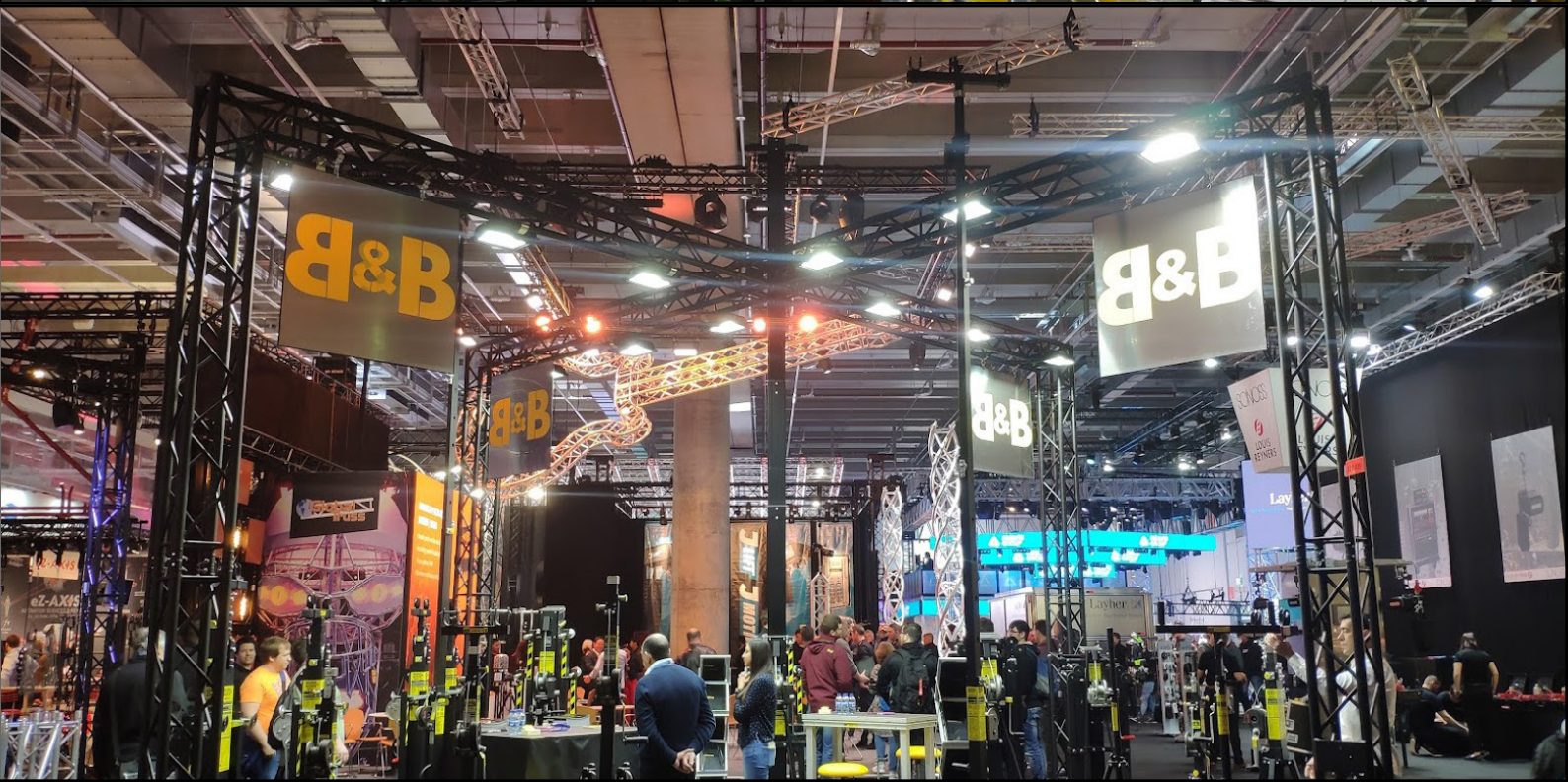


Description

It reaches the 6,6 meters of height By means of 5 telescopic carbon steel stretches, which provide a maximum load of 300kg. It features security triggers to block the diferent stretches at different heights. The adjustable legs and the spindles of these ensure a good anchorage and perfect stability.

Description

Alcanza los 6,6 metros de altura mediante 5 tramos telescópicos de acero al carbono que además proporcionan una carga máxima de 300kg. Consta de gatillos de seguridad para el bloqueo de los tramos en diferentes alturas. Las patas regulables y los husillos de estas aseguran un buen anclaje y una perfecta estabilidad.



GROUND
SUPPORT
LIFTER

&

FOLDABLE
LEGS
LIFTERS

Characteristics



Max Load:
500 kg.



Max height:
7 or 9
meters.



Weight:
162 or
172 kg.



Min height:
1,60 meters.



Winch:
AL-KO
901 Plus



Truss:
Square 29

Manufacturing materials: Carbon steel profile type S275J0H manufactured according to the norms EN 10219 y EN10305.5

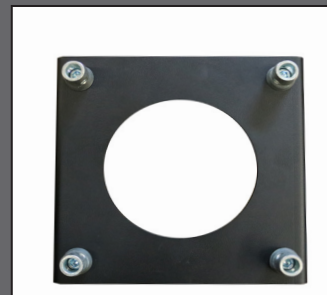
Aluminium alloy profile 6082/T6 manufactured according to the normative EN15088, EN755, EN12020-2, EN 573



Top detail

Certificado de fabricación/
Manufacturing certificate

Certificado prueba de carga/
Load test certificate





Description

Kappa 70 and Kappa 90 are the same type of structural lifter. First one is formed of the base plus 4 aluminium trusses with a chain block security system. The second one have the same sistem but is formed of 4 of these truss. The adjustable legs and the spindles of these ensure a good anchorage and perfect stability.



Truss detail

Description

La Kappa 70 y la Kappa 90 son el mismo tipo de elevador estructural. La primera esta formada por 4 trusses con un sistema de bloqueo con cadena. El segundo funciona con el mismo sistema pero se compone de 5 tramos de truss. Las patas ajustables y los tirantes proveen de un buen anclaje y estabilidad.

DELTA 100

FOLDABLE LEGS

Characteristics



Max Load:
150 kg.



Max height:
4,8 meters.



Weight:
34 kg.



Min height:
1,59 meters.



Winch:
AL-KO
351 Plus



Insertion:
35 mm.
Male

Certificado de fabricación/
Manufacturing certificate

Certificado prueba de carga/
Load test certificate



DELTA 80

Characteristics



Max Load:
100 kg.



Max height:
4,35 meters.



Weight:
23 kg.



Min height:
1,49 meters.



Winch:
AL-KO
351 Plus



Insertion:
35 mm.
Female

Certificado de fabricación/
Manufacturing certificate

Certificado prueba de carga/
Load test certificate



DELTA 60

FOLDABLE LEGS



Characteristics



Max Load:
120 kg.



Max height:
3,3 meters.



Weight:
21 kg.



Min height:
1,34 meters.



Winch:
AL-KO
351 Plus



Insertion:
35 mm.
Male

Certificado de fabricación/
Manufacturing certificate

Certificado prueba de carga/
Load test certificate



DELTA 40



Characteristics



Max Load:
100 kg.



Max height:
3 meters.



Weight:
13 kg.



Min height:
1,58 meters.



Winch:
Goliath
4AFMD



Insertion:
35 mm.
Female

Certificado de fabricación/
Manufacturing certificate

Certificado prueba de carga/
Load test certificate



DELTA 10

FOLDABLE LEGS

Characteristics



Max Load:
60 kg.



Max height:
3,1 meters.



Weight:
7 kg.



Min height:
1,45 meters.



Winch:
None



Insertion:
35 mm.
Female

Certificado de fabricación/
Manufacturing certificate

Certificado prueba de carga/
Load test certificate



DELTA 20

Characteristics



Max Load:
60 kg.



Max height:
1,7 meters.



Weight:
7,3 kg.



Min height:
1,1 meters.



Winch:
None



Insertion:
35 mm.
Female

Certificado de fabricación/
Manufacturing certificate

Certificado prueba de carga/
Load test certificate





ACCESSORY TECHNICAL DETAILS

*DETALLES TÉCNICOS
ACCESORIOS*



Support for truss adjustable accessory



Max length:
59cm.
Max high:
30cm.
Max truss support measure:
59cm.
Min truss support measure:
18cm.
Main tube thickness :
50mm.
Variations:
AM3501: 35mm male insertion
AH3501: 35mm female insertion
AM3801: 38mm male insertion
AM5001: 50mm male insertion

Compatible:

- AM3501: Delta 60, Delta 100, Sigma 30, Sigma 40, Sigma 50, Sigma 70.
- AH3501: Delta 10, Delta 30, Delta 40, Delta 50, Delta 80.
- AM3801: Beta 50, Beta 70.
- AM5001: Beta 80, Beta 90.

Support for truss fixed accessory



Max length:
35cm.
Max high:
28cm.
Max truss support measure:
29cm.
Main tube thickness :
50mm.
Variations:
AM3502: 35mm male insertion
AH3502: 35mm female insertion
AM3802: 38mm male insertion
AM5002: 50mm male insertion

Compatible:

- AM3502: Delta 60, Delta 100, Sigma 30, Sigma 40, Sigma 50, Sigma 70.
- AH3502: Delta 10, Delta 30, Delta 40, Delta 50, Delta 80.
- AM3802: Beta 50, Beta 70.
- AM5002: Beta 80, Beta 90.

Support for parallel truss accessory



Max length:
41cm.
Max high:
22cm.
Distance between anchors:
36,5cm.
Main tube thickness :
50mm.
Variations:
AM3503: 35mm male insertion
AH3503: 35mm female insertion
AM3803: 38mm male insertion
AM5003: 50mm male insertion

Compatible:

- AM3503: Delta 60, Delta 100, Sigma 30, Sigma 40, Sigma 50, Sigma 70.
- AH3503: Delta 10, Delta 30, Delta 40, Delta 50, Delta 80.
- AM3803: Beta 50, Beta 70.
- AM5003: Beta 80, Beta 90.

ACCESSORY

Support for parallel truss accessory



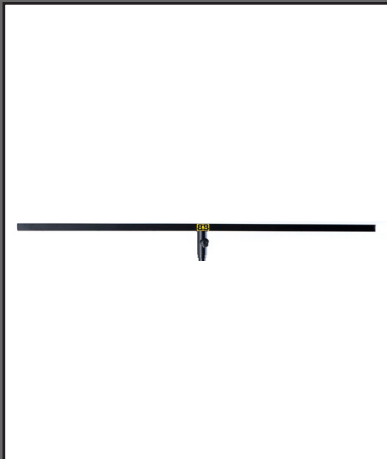
Max length:
12cm.
Max high:
43cm.
Max truss support measure:
29cm.
Main tube thickness :
50mm

Variations:
AM3504: 35mm male insertion
AH3504: 35mm female insertion
AM3804: 38mm male insertion
AM5004: 50mm male insertion

Compatible:

- AM3504: Delta 60, Delta 100, Sigma 30, Sigma 40, Sigma 50, Sigma 70.
- AH3504: Delta 10, Delta 30, Delta 40, Delta 50, Delta 80.
- AM3804: Beta 50, Beta 70.
- AM5004: Beta 80, Beta 90.

Lights support bar 185



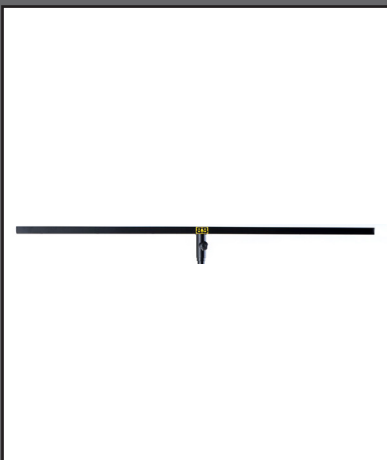
Max length:
196cm.
Max high:
22cm.
Distance between anchors:
27cm.
Number of lights
6.

Variations:
AM3505: 35mm male insertion
AH3505: 35mm female insertion
AM3805: 38mm male insertion
AM5005: 50mm male insertion

Compatible:

- AM3505: Delta 60, Delta 100, Sigma 30, Sigma 40, Sigma 50, Sigma 70.
- AH3505: Delta 10, Delta 30, Delta 40, Delta 50, Delta 80.
- AM3805: Beta 50, Beta 70.
- AM5005: Beta 80, Beta 90.

Lights support bar 149



Max length:
149cm.
Max high:
20cm.
Distance between anchors:
22,5cm.
Number of lights:
6.

Variations:
AH3512: 35mm female insertion

Compatible:

- AH3512: Delta 10, Delta 30, Delta 40, Delta 50, Delta 80.

Bar support acoustic boxes



Max length:
61cm.
Max high:
22cm.
Distance between insertion:
55cm.
Acoustic box insertion :
35mm.

Variations:
AM3506: 35mm male insertion
AH3506: 35mm female insertion
AM3806: 38mm male insertion
AM5006: 50mm male insertion

Compatible:

- AM3506: Delta 60, Delta 100, Sigma 30, Sigma 40, Sigma 50, Sigma 70.
- AH3506: Delta 10, Delta 30, Delta 40, Delta 50, Delta 80.
- AM3806: Beta 50, Beta 70.
- AM5006: Beta 80, Beta 90.

Support for double bar accessory



Max length:
41cm.
Max high:
56cm.
Distance between anchors H**:
33cm.
Distance between anchors V**:
54cm.

Variations:
AM3508: 35mm male insertion
AH3508: 35mm female insertion
AM3808: 38mm male insertion
AM5008: 50mm male insertion

Compatible:

- AM3508: Delta 60, Delta 100, Sigma 30, Sigma 40, Sigma 50, Sigma 70.
- AH3508: Delta 10, Delta 30, Delta 40, Delta 50, Delta 80.
- AM3808: Beta 50, Beta 70.
- AM5008: Beta 80, Beta 90.

Array support for telescopic lift



Max array high:
150cm.
High:
116cm.
Length:
36,5cm.

Variations:
AM3511: 35mm male insertion
AM3811: 38mm male insertion
AM5011: 50mm male insertion

Compatible:

- AM3511: Delta 60, Delta 100, Sigma 30, Sigma 40, Sigma 50, Sigma 70.
- AM3811: Beta 50, Beta 70.
- AM3511: Beta 80, Beta 90.

ACCESSORY

Single lift truss support 40



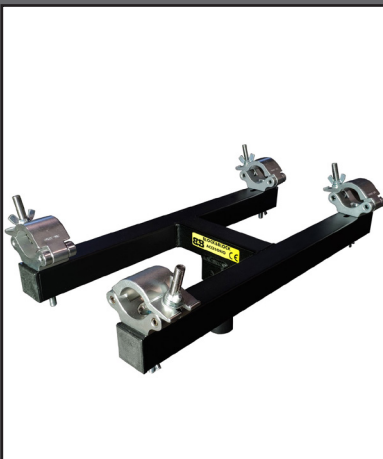
Max length:
60cm.
Max high:
20cm.
Max truss support measure:
40cm.
Main tube thickness :
50mm

Variations:
AM3513: 35mm male insertion
AM3813: 38mm male insertion
AM5013: 50mm male insertion

Compatible:

- AM3513: Delta 60, Delta 100, Sigma 30, Sigma 40, Sigma 50, Sigma 70.
- AM3813: Beta 50, Beta 70.
- AM3513: Beta 80, Beta 90.

Single lift truss support 29



Max length:
60cm.
Max high:
20cm.
Max truss support measure:
29cm.
Main tube thickness :
50mm

Variations:
AM3510: 35mm male insertion
AM3810: 38mm male insertion
AM5010: 50mm male insertion

Compatible:

- AM3510: Delta 60, Delta 100, Sigma 30, Sigma 40, Sigma 50, Sigma 70.
- AM3810: Beta 50, Beta 70.
- AM3510: Beta 80, Beta 90.

35mm insertion extension



Max length:
5cm.
Max high:
70cm.

Variations:
AM3509: 35mm male insertion

Compatible:

- AM3509: Delta 60, Delta 100, Sigma 30, Sigma 40, Sigma 50, Sigma 70.

Support for truss adaptor (parallel) Omega



Max length:
10cm.
Max high:
20cm.
Main tube measure:
50mm.
Insertion measure:
50x50mm.

AT-G1

Support for truss adaptor (perpendicular) Omega



Max length:
10cm.
Max high:
20cm.
Main tube measure:
50mm.
Insertion measure:
50x50mm.

AT-G5

Hook adaptor for Omega



Max length:
10cm.
Max high:
20cm.
Hook hole measure:
30mm.
Insertion measure:
50x50mm.

AG-A5

Array accessory for Omega



Max length:
45,5cm.
Max high:
10cm.
Hook hole measure:
30mm.
Insertion measure:
50x50mm.

AC-G5

Support for truss adaptor (parallel) Gamma



Max length:
10,5cm.
Max high:
21cm.
Main tube measure:
50mm.
Insertion measure:
70x50mm.

AT-G2

Support for truss adaptor (perpendicular) Gamma



Max length:
10,5cm.
Max high:
21cm.
Main tube measure:
50mm.
Insertion measure:
70x50mm.

AT-G6

ACCESSORY

Hook Adaptor for Gamma



Max length:
6cm.
Max high:
16,5cm.
Hook hole measure:
25mm.
Insertion measure:
70x50mm.

AG-A6

Array accessory for Gamma



Max length:
41,7cm.
Max high:
11,5cm.
Hook hole measure:
25mm.
Insertion measure:
70x50mm.

AC-G6

Support for truss adaptor (parallel) Alfa



Max length:
10,5cm.
Max high:
23cm.
Main tube measure:
50mm.
Insertion measure:
80x50mm.

AT-G3

Support for truss adaptor (perpendicular) Alfa



Max length:
10,5cm.
Max high:
23cm.
Main tube measure:
50mm.
Insertion measure:
80x50mm.

AT-G7

Hook Adaptor for Alfa



Max length:
6,5cm.
Max high:
18cm.
Hook hole measure:
25mm.
Insertion measure:
80x50mm.

AG-A7

Array accessory for Alfa



Max length:
41,7cm.
Max high:
12,3cm.
Hook hole measure:
25mm.
Insertion measure:
80x50mm.

AC-G7

BLOCK&BLOCK

Global Block S.L.

Pol. In. "Les Valletes"
c/ Dels Obrers 19-B
46192 Valencia, Spain
+34 962 999 858
info@blockandblock.es
www.blockandblock.es