

The logo for Antari Fog Machine features the brand name 'Antari' in a large, bold, red font with a white outline. Below it, the words 'FOG MACHINE' are written in a smaller, white, sans-serif font on a red rectangular background. A small registered trademark symbol (®) is located to the upper right of the 'Antari' text.

Antari
FOG MACHINE

PRODUCT GUIDE

NEW PRODUCTS

SNOW

01



S-600

FAZE

02



F-2

SCENT

03



SCN-600

CO2

04



CO-1

FOG MACHINE

FOGGER

05



W-5300 | W-5150

06



W-510 | W-508

07



M-11

08



M-10 | M-8

09



M-8

10



Z-3000H | Z-1500H

11



Z-1200H | Z-1000H

12



Z-800H

FOG JET

13



M-9

14



M-TX

15



Z-1520 | W-710

16



M-6 | Z-1020

WEATHERPROOFED

17



W-1200 | W-1200

BATTERY POWERED

18



MB-1

19



MB-20X

PUMPLESS OFF-MAINS CAPABLE FOG MACHINE

20



MB-35

SMAZE

21



S-8

FAZE®

22



F-6

23



F-7

24



Z-1000 | Z-800

HAZEN

25



H-1000

26



H-1000 | H-500

27



H-1000 | H-500

LOW FOG

28



DND-250 | DND-500

29



DND-1001 | DND-100

SPECIAL EFFECTS

SNOW & FOAM

31

S-300



32

SW-200



33

SW-200



34

S-2000 (S-1000)



35

S-100



BUBBLE

36

B-200



37

B-100 (B-50)



38

AF-50



39

AF-61/AF-3



FIRE TRAINING

41

FT-200



42

FT-100



43

FT-50



44

FT-20X



ACCESSORIES FLUID

46

100W-61 (100W-20)



47

CONTROL MODULE

49

REMOTE

55

HANGING TRACKED SYSTEM

56

ADAPTOR

57

FLIGHT CASE

58

FLUID

DarkFX

65

DarkFX UV Paint



67

DARKFX STRIP 100



68

DARKFX WASH 2000 IP



69

DARKFX WASH 2000



70

DARKFX SPOT 500



71

DARKFX STRIP 50



72

DARKFX STRIP 50 IP



73

DARKFX SPOT 50 IP



74

DARKFX SPOT 100



75

DARKFX DYE 4MM



75

DARKFX DYE 4



76

ANTARI WATCH

78

SPEC CHART



All of our effects are inspired by **Mother Nature.**
All of our machines are **Designed to Respect her.**



COMPANY PROFILE

Since 1984, Antari has been a leading global manufacturer, specializing in atmospheric special effects, like fog, haze, and snow for a wide range of international live and broadcast venues, festivals, corporate events, theatre, concerts, clubs, theme parks, archtainment, and houses of worship. Antari has always pursued the perfect fog, with some of the most stringent quality control standards in the entertainment production industry.

Antari's R&D expertise, including an in-house team of engineers and designers, along with modern production facilities, and strict attention to detail allows Antari to continually create new and exciting cutting-edge special effects, while always being mindful of environmental concerns to also create the safest and most energy-efficient products possible. Our products are designed and manufactured to conform to all international safety standards such as CE, IVD, and EMC.

Antari products are also widely used in residential/commercial security, pest control, industrial humidity control, horticultural uses, hospital sterilization, and leak detection.

Antari, an innovative leader in entertainment special effects, exceeding customer expectations since 1984.



SNOW MACHINE S-600



No. 002
2-Channel Remote



No. 003
2-in-1 Tube with Filter



No. 004
Hanging Bracket



01: 01
2-Channel Remote



02: 02
2-Channel Remote



03: 03
2-Channel Remote

S-600 Snow Machine



| | |
|-----------------------|-----------------------------------------------------------------------------------------------------------------------------------------------------------------------------------------------|
| - Input voltage | US model: AC 120-220V, 50/60Hz EU model: AC 220-240V, 50/60Hz, 1A |
| - Rated power | 100W |
| - Fluid consumption | 100 ml/hour |
| - Compatible fluid | Artar SL-A Snow & Foam Fluid (New Formula) Artar SL-W Premium Snow Fluo (New Formula) Artar SL-E Super Dry Snow Fluid Artar SL-C Anti-Freezing Snow Fluid Artar SL-08W Snow Fluid |
| - Ambient temp. range | 0°C - 40°C (32°F - 104°F) |
| - Control | Manual / Timer (DMG) / Wireless Wireless (DMG) (Optional) |
| - DMG channels | 2 channels |

| | |
|------------------------|-------------------------------------------------------------------------------------------------------------------|
| - Connection | Nx2x6 Powercord (Power) SLR 3-pin (DMG) |
| - Included accessories | W-2 Wireless Radio Transmitter S-Meter Fluid Tube with Filter Hanging Bracket |
| - Optional accessories | W10-10 Wireless DMG SC-4 Cable Remote S-600-01 Bottle Holder For S-Liner Bottle (Bottle is not included) |
| - Dimensions | L462 x W356 x H274 mm S.18.1 x W14.1 x H10.8 inch |
| - Weight | 24 kg (52.9 lb) |



SCAN QR CODE



F-2 Fazer

| | | | |
|-----------------------|--------------------------------------------------------------------------|-----------------------|------------------------------------------------------------------|
| - Input voltage | US model: AC 100-120V 50/60Hz 8.5A EU model: AC 220-240V 50/60Hz 8.5A | - Operating time | 10 hrs at max. output |
| - Rated power | 1000/1000W 240V/1650W | - Ambient temp. range | 0°C - 40°C (32°F - 104°F) |
| - Warm-up time | 15 minutes (approx.) | - Control | Manual, DMX12, Timer |
| - Fluid consumption | 6.5 ml/min | - DMX channels | 2 channels |
| - Fluid tank capacity | 9 Liters (2.32 gallon) | - Connection | 1/2" X 3-pin and 3-pin (DMX) |
| - Compatible fluid | Armat FL3-SL Heavy Fog/Fluid | - Dimension | 1,299 W x 443 D x 267 H mm (51.1" W x 17.4" D x 10.5" H incl) |
| | | - Weight | 16.7 kg (32.4 lbs) |



SCAN QR CODE



SCN-600 Scent Machine

- Input voltage AC 100-240V 50 / 60Hz
- Power Consumption 7W
- Fluid Consumption Rate 3 ml / hour
- Fluid tank capacity 100 ml
- Operating time 50 hour
- Ambient temp range 0°C - 40°C (32°F - 104°F)
- Control Manual / Timer / 2400/12
- Optional accessories SCN-600-48 Hanging Bracket
- Dimension 1.3x7.1x10.1 (32x180x257 mm)
- Weight 3.2 kg (7.05 lbs)



CH-1 Cinema Haze Machine



| | | | |
|-----------------------|------------------------------------------------------------|------------------------|---------------------------------------------------------|
| - Input voltage | AC 100-240V, 50/60Hz, 6A | - Ambient temp. range | Ambient, 10°C (50°F) |
| - Rated power | 100W (400W) | - Control | Wireless DMX (Optional) 1/3/5 channel |
| - Warm-up time | 8 minutes (approx) | - DMX channels | Neutral TOE™ Connector (Power) |
| - Fluid consumption | 2ml/min (240 psi / 2.76 bar) | - Connection | 3/8" 3-pin and 5-pin (DMX) 1/4" - 18 R.P (Gas Inlet) |
| - Fluid tank capacity | 2.5 liters (0.66 gallon) | - Included Accessories | Pressure Gauge Air Hose |
| - Compatible fluid | Antari CH-1 Haze Fluid CO ₂ , N ₂ | - Optional Accessories | W-DMX-PCB ICS-1 Light Case |
| - Gas type | O ₂ - 60psi / 3.4 bar - 4 Year | - Dimensions | 1.57" W x 6.44" H x 2.25" (inch) |
| - Gas pressure range | 0.36 kg / hr @ 40 psi | - Weight | 1.7 kg (3.74 lbs) |
| - Gas consumption | 0.18 kg / hr @ 70 psi | | |
| - Control interface | IFT LCD Touch Screen | | |
| | 0°C - 40°C (32°F - 104°F) | | |



SCAN QR CODE



SCAN QR CODE



W-515-48 Hanging Bracket

W-530D Wireless & WDMX Control Fog Machine

Power In (200V) 2L32000A110A2 2L32000A000A4 | (1400W) | W-530D

| | | | |
|-----------------------|------------------------------------------------------------|------------------------|-------------------------------------------------------|
| - Input voltage | (E) model AC 220-240V 50/60Hz 4.5A | - DMX channels | 1 channel |
| - Rated power | 2570W | - Connection | Matrix Powercan (Power) |
| - Warm-up time | 10 minutes (approx.) | | XLR 3-pin and 5-pin (DMX) |
| - Fluid consumption | 160 ml/min | - Included accessories | W-1 Wireless Radio Transmitter |
| - Fluid tank capacity | 4 Liters (1.05 gallon) | - Optional accessories | W-515-48 Hanging Bracket |
| - Compatible fluid | Antari FL-2 Heavy Fog Fluid Antari FL-1 Light Fog Fluid | - Dimension | 1.567'W 2'18" H 263 mm 6.22'W 10'14" H 10.43' inch |
| - Ambient temp. range | 0°C - 40°C (32°F - 104°F) | - Weight | 10.1kg (22.1 lbs) |
| - Control | Manual, Timer, DMX 512 Wireless, Wireless DMX | | |



SCAN QR CODE



SCAN QR CODE



W-515-48 Hanging Bracket

W-515D Wireless & WDMX Control Fog Machine

Power In (200V) 2L32000A110A2 2L32000A000A4 | (1700W) | W-515D

| | | | |
|-----------------------|-----------------------------------------------------------------------------|------------------------|-------------------------------------------------------|
| - Input voltage | (E) model AC 100-120V 50/60Hz 14A (E) model AC 220-240V 50/60Hz 4.5A | - DMX channels | 1 channel |
| - Rated power | 1700W | - Connection | Matrix Powercan (Power) |
| - Warm-up time | 10 minutes (approx.) | | XLR 3-pin and 5-pin (DMX) |
| - Fluid consumption | 100 ml/min | - Included accessories | W-1 Wireless Radio Transmitter |
| - Fluid tank capacity | 4 Liters (1.05 gallon) | - Optional accessories | W-515-48 Hanging Bracket |
| - Compatible fluid | Antari FL-2 Heavy Fog Fluid Antari FL-1 Light Fog Fluid | - Dimension | 1.567'W 2'18" H 263 mm 6.22'W 10'14" H 10.43' inch |
| - Ambient temp. range | 0°C - 40°C (32°F - 104°F) | - Weight | 10.1kg (22.1 lbs) |
| - Control | Manual, Timer, DMX 512 Wireless, Wireless DMX | | |



SCAN QR CODE



UL LISTED
ELECTRICAL
EQUIPMENT
CLASSIFICATION
TYPE: FOGGLER
CLASSIFICATION:
CLASSIFICATION:
CLASSIFICATION:



AC-1000

3.5" x 2.5" x 1.5"



OPTIONAL

W-570-10

Hanging Bracket

W-570 Wireless Control Fog Machine

Power On: (ON) 248.274 | (OFF) 4.757550000000000E+009 | (ON) 4821042-02-1 | (Power) 1000000

| | | | |
|-----------------------|--------------------------------------------------------------------------|------------------------|-----------------------------------------------------|
| - Input voltage | 55 model: AC 100-120V 50/60Hz 6.5A 52 model: AC 220-240V 50/60Hz 6.5A | - Ambient temp. range | 2°C - 40°C (32°F - 104°F) |
| - Rated power | 120V 1020W 240V 1070W | - Control | DMCT2 Wireless |
| - Warm-up time | 10 minutes (approx.) | - DMX channels | 1 channel |
| - Fluid consumption | 10 ml/min | - Connection | AC (Power) XLR 3-pin (DMX) |
| - Fluid tank capacity | 3.8 Liters (0.74 gallons) | - Included accessories | W-1 Wireless Radio Transmitter |
| - Compatible fluid | AncorFLR Heavy Fog Fluid AncorFLR Light Fog Fluid | - Optional accessories | W-570-10 Hanging Bracket L-667W 250 W 223 mm |
| - Operating time | 30 mins at max. output | - Dimensions | 5.71" W x 9.84" x 8.78" (inch) 14.4 kg (31.9 lb) |
| | | - Weight | |



SCAN QR CODE



UL LISTED
ELECTRICAL
EQUIPMENT
CLASSIFICATION
TYPE: FOGGLER
CLASSIFICATION:
CLASSIFICATION:



AC-1000

3.5" x 2.5" x 1.5"

W-508 Wireless Control Fog Machine

| | | | |
|-----------------------|--------------------------------------------------------------------------|------------------------|-------------------------------------------------------------|
| - Input voltage | 55 model: AC 100-120V 50/60Hz 6.7A 52 model: AC 220-240V 50/60Hz 6.5A | - Operating time | 40 mins at max. output |
| - Rated power | 810W | - Ambient temp. range | 2°C - 40°C (32°F - 104°F) |
| - Warm-up time | 2 minutes (approx.) | - Control | Manual, Wireless |
| - Fluid consumption | 12 ml/min | - Included accessories | W-1 Wireless Radio Transmitter |
| - Fluid tank capacity | 3.8 Liters (0.71 gallons) | - Dimensions | 1.25" W x 12" x 7.25" inch 5.72" W x 12.04" x 8.58" inch |
| - Compatible fluid | AncorFLR Heavy Fog Fluid AncorFLR Light Fog Fluid | - Weight | 2.8 kg (6.18 lbs) |



Scan to view product information



OPTIONAL
W-DM-PC30



OPTIONAL
WTS-70



OPTIONAL
WTS-70

M-11 Dual Output Stage Fog Machine

Part No. (DMX) 230700470024 230700470024 / (DMX) W-0000



| | | | |
|------------------------------|----------------------------------------------------------------------------------------------|-------------------------------|-----------------------------------------------------------------------------|
| - Input voltage | US model: AC 100-120V 50/60Hz 10.5A EU model: AC 220-240V 50/60Hz 6.47A 500W | - DMX channels | 1 or 3 channels |
| - Rated power | | - Connection | Neutrik TRAC II Connector (Power) XLR 3-pin and 5-pin (DMX) |
| - Warm-up time | 10 minutes (approx) | - Optional accessories | W-DM-PC30 Wireless DMX WTS-70 Wireless WTS-70 Wireless DMX and Remote |
| - Fluid consumption | 400 ml/min (300% output) | - Dimension | L 475 W 220 H 200 mm S 26.57 W 12.6 H 11.22 inch |
| - Fluid tank capacity | 10 Liters (2.64 gallon) | - Weight | 25 kg (55.1 lbs) |
| - Compatible fluid | Artan/FLS Heavy Fog Fluid Artan/FLS Light Fog Fluid Artan/FLS Lang Hang Time Fog Fluid | | |
| - Ambient temp/ range | 0°C - 40°C (32°F - 104°F) | | |
| - Control | Manual, Timer, DMX SD Wireless (Optional) Wireless DMX (Optional) | | |



INCLUDED
M-20 Control Module



OPTIONAL
M-30 Pro Wireless Control Module

M-10 Stage Fog Machine

Model: 1 AC 220-240V 50/60Hz 12.5A

| | |
|-----------------------|--------------------------------------------------------|
| - Input voltage | 120V |
| - Rated power | 300W |
| - Warm-up time | 3-5 minutes (approx.) |
| - Fluid consumption | 250 ml/min |
| - Fluid tank capacity | 10 Liters (2.64 gallon) |
| - Compatible fluid | Artan FLS Heavy Fog Fluid Artan FLS Light Fog Fluid |
| - Ambient temp. range | 0°C - 40°C (32°F - 104°F) |
| - Control | Manual, Timer, DM102 Wireless (Optional) |

| | |
|------------------------|-------------------------------------------------------|
| - DM1 channels | 1 channel |
| - Connection | Neutrik Powercon (Power) XLR 3-pin and 5-pin (DM0) |
| - Included accessories | M-20 Control Module |
| - Optional accessories | M-30 Pro Wireless Control Module |
| - Dimension | 1.480 W 229 H 276 mm 5.827 W 9.016 H 10.871 inch |
| - Weight | 2.5 kg (5.51 lbs) |



INCLUDED
M-20 Control Module



OPTIONAL
M-30 Pro Wireless Control Module



OPTIONAL
M-30 Pro Wireless Control Module

M-5 Stage Fog Machine

Model: 1 AC 100-120V 50/60Hz 12.5A

| | |
|-----------------------|--------------------------------------------------------|
| - Input voltage | 120V |
| - Rated power | 300W |
| - Warm-up time | 3-5 minutes (approx.) |
| - Fluid consumption | 160 ml/min |
| - Fluid tank capacity | 10 Liters (2.64 gallon) |
| - Compatible fluid | Artan FLS Heavy Fog Fluid Artan FLS Light Fog Fluid |
| - Ambient temp. range | 0°C - 40°C (32°F - 104°F) |
| - Control | Manual, Timer, DM102 Wireless (Optional) |

| | |
|------------------------|------------------------------------------------------------|
| - DM1 channels | 1 channel |
| - Connection | Neutrik Powercon (Power) XLR 3-pin and 5-pin (DM0) |
| - Included accessories | M-20 Control Module |
| - Optional accessories | M-30 Pro Wireless Control Module M-3-10 Hanging Bracket |
| - Dimension | 1.480 W 229 H 276 mm 5.827 W 9.016 H 10.871 inch |
| - Weight | 2.5 kg (5.51 lbs) |



SCAN QR CODE

INCLUDED
1 x 2.5L Tank
1 x 2.5L Hose
1 x 2.5L NozzleOPTIONAL
1 x 2.5L Hose
1 x 2.5L NozzleOPTIONAL
1 x 2.5L Hose
1 x 2.5L Nozzle

M-8 Stage Fog Machine

ITEM NO. 000000 | SKU NO. 000000 | 000000



| | | | |
|-----------------------|------------------------------------------------------------------------------------|------------------------|------------------------------------------------------|
| - Input voltage | EU & UK AC 100-240V 50/60Hz 16.3A US & CA AC 120-240V 10/16.3A 7.5A 700W | - DMX channels | - Included |
| - Rated power | 700W | - Connection | 1 x 4 Pin Power (Power) |
| - Warm-up time | 9.5 minutes (approx.) | - Included accessories | M-8 3pin to 5-pin (DMX) |
| - Fluid consumption | 24.0ml/min | - Optional accessories | M-21 Control Module M-37 Wireless Control Module |
| - Fluid tank capacity | 10 Liters (2.64 gallon) | - Dimension | M-148 Hanging Bracket |
| - Compatible fluid | Artair F18 Heavy Fog Fluid Artair F18 Light Fog Fluid | - Weight | 1.69' W 275 H 290 mm (6.27' W 10.84 H 11.42 inch) |
| - Ambient temp. range | 0°C - 40°C (32°F - 104°F) | | 22 kg (48.5 lbs) |
| - Control | Manual / Timer (0-60 min) Wireless (Optional) | | |



SCAN QR CODE



Z-3000II Fog Machine

| | | | |
|-----------------------|--------------------------------------------------------|------------------------|---------------------------------------------------------------|
| - Input voltage | Electrical: AC 220-240V 50/60Hz 1A | - Control | Manual, 24hr 5/12 Timer |
| - Rated power | 2500W | - Wireless (Optional) | Wireless (Optional) |
| - Warm-up time | 10 minutes (approx.) | - Tank material | Titanium |
| - Fluid consumption | 200 ml/min | - Connection | 5/8" 3-pin and 5-pin (2x4) |
| - Fluid tank capacity | 4 Liters (1.09 gallon) | - Included accessories | Z-20 Control Module |
| - Compatible fluid | Artan FLS Heavy Fog Fluid Artan FLS Light Fog Fluid | - Optional accessories | Z-20 Pro Wireless Remote |
| - Ambient temp. range | 0°C - 40°C (32°F - 104°F) | - Dimension | 1,155 W x 310 D x 269 mm \$ 21.94 W x 12.20 D x 10.59 inch |
| | | - Weight | 11.8 kg (26.07 lbs) |



SCAN QR CODE



Z-1500II Fog Machine

| | | | |
|-----------------------|---------------------------------------------------------------------------|------------------------|---------------------------------------------------------------|
| - Input voltage | 05 model: AC 100-120V 50/60Hz 12.5A 02 model: AC 220-240V 50/60Hz 6.3A | - Control | Manual, 24hr 5/12 Timer |
| - Rated power | 1500W | - Wireless (Optional) | Wireless (Optional) |
| - Warm-up time | 10 minutes (approx.) | - Tank material | Titanium |
| - Fluid consumption | 70ml/min | - Connection | 5/8" 3-pin and 5-pin (2x4) |
| - Fluid tank capacity | 4 Liters (1.09 gallon) | - Included accessories | Z-20 Control Module |
| - Compatible fluid | Artan FLS Heavy Fog Fluid Artan FLS Light Fog Fluid | - Optional accessories | Z-20 Pro Wireless Remote |
| - Ambient temp. range | 0°C - 40°C (32°F - 104°F) | - Dimension | 1,160 W x 255 D x 257 mm \$ 21.61 W x 10.20 D x 10.12 inch |
| | | - Weight | 14 kg (30.86 lbs) |



SCAN QR CODE



Z-30

Cable Remote



Z-40

Wireless Remote

Z-1200II Fog Machine



FOGGER 1200W 2-RECORDING 1-RECORDING 1-RECORDING

- **Input voltage** US model / AC 100-120V 50/60Hz 1A
EU model / AC 220-240V 50/60Hz 1.5A
- **Rated power** 120W / 120W
240W / 250W
- **Warm-up time** 5 minutes (approx.)
- **Fluid consumption** 72 ml/min
- **Fluid tank capacity** 2.3 Liters (2.4 gal)
- **Compatible fluid** Acton FLS Heavy Fog Fluid
Acton FLS Light Fog Fluid
- **Ambient temp. range** 0°C - 40°C (32°F - 104°F)

- **Control**
- **DMX channels**
- **Connection**
- **Included accessories**
- **Optional accessories**
- **Dimension**
- **Weight**

- Manual (DMX/2/3/5m)
- Wireless (Optional)
- 1 channel
- 3.6 x 3 pin (DMX)
- Hanging Bracket
- Z-30 Cable Timer Remote
- Z-40 Wireless Remote
- 1.430 W 196 x 274 mm
- 0.1725 W 1.01818 x 6.12181
- 6.6 kg (14.53 lbs)



SCAN QR CODE



ETL LISTED TO UL 1004
CLASSIFICATION
CLASSIFICATION
CLASSIFICATION



Z-30

Cable Remote



Z-40

Wireless Remote



Z-50

Wireless Remote

Z-1000II Fog Machine



FOGGER 1000W 2-RECORDING 1-RECORDING 1-RECORDING

- **Input voltage** US model / AC 100-120V 50/60Hz 1A
EU model / AC 220-240V 50/60Hz 1.5A
- **Rated power** 100W / 100W
240W / 250W
- **Warm-up time** 5 minutes (approx.)
- **Fluid consumption** 50 ml/min
- **Fluid tank capacity** 1.7 Liters (1.8 gal)
- **Compatible fluid** Acton FLS Heavy Fog Fluid
Acton FLS Light Fog Fluid
- **Ambient temp. range** 0°C - 40°C (32°F - 104°F)
- **Control**

- **DMX channels**
- **Connection**
- **Included accessories**
- **Optional accessories**
- **Dimension**
- **Weight**

- 1 channel
- DMX (Power)
- 3.6 x 3 pin DMX
- Hanging Bracket
- Z-30 Cable Remote
- Z-40 Cable Timer Remote
- Z-50 Wireless Remote
- 1.430 W 196 x 274 mm
- 0.1725 W 1.01818 x 6.12181
- 6.6 kg (14.53 lbs)



SCAN QR CODE



UL LISTED



UL LISTED



UL LISTED



Z-800II Mobility and Portability Fog Machine



Power & Data Communications

| | | | |
|-----------------------|----------------------------------------------------------------------------|---------------------------|----------------------------------------------------|
| - Input voltage | 05 model: AC 100-120V, 50/60Hz 6.3A 02 model: AC 220-240V, 50/60Hz 3.3A | - Control | Remote |
| - Rated power | 600W | - Included Accessories | Timer (Optional) |
| - Warm-up time | 2 minutes (approx.) | - Wireless (Optional) | 2-10 Cable Remote |
| - Fluid consumption | 12 ml/min | - 2-40 Cable Timer Remote | |
| - Fluid tank capacity | 5.8 liters (1.27 gallon) | - 2-50 Wireless Remote | |
| - Compatible fluid | Artan FLS Heavy Fog Fluid Artan FLS Light Fog Fluid | - Dimension | 1.25 W 128 H 278 mm 5.12 AC W 5.04 H 10.94 inch |
| - Operating time | 60 mins. at max. output | - Weight | 3.5 kg (7.71 lbs) |
| - Ambient temp. range | 0°C - 40°C (32°F - 104°F) | | |



SCAN QR CODE



INCLUDED
1 x 2
Remote Control



OPTIONAL
W-R-10
Fast lock bracket



OPTIONAL
W-R-10
Wireless DMX

M-9 Stage Fog Jet



| | | | |
|------------------------|--------------------------------------------------------------------------------|------------------------|---------------------------------------------------------------|
| - Input voltage | 33 model: AC 100-200V 50/60Hz 0.2A E3 model: AC 220-240V 50/60Hz 1.6A | - DMX channels | 10 / 15 / 25 channels |
| - Rated power | 300W | - Connection | Neutrik T10E 1 Connector (Power) XLR 3-pin and 5-pin (DMX) |
| - Light Source | 27 x 36 LED (5-in-1 RGB) | - Included accessories | W-2 Wireless Radio Transmitter |
| - Warm-up time | 3-6 minutes (approx.) | - Optional accessories | W-R-10 Wireless DMX M-9-10 Fast lock bracket |
| - Fluid consumption | 400 ml/min (100% output) | - Dimension | 1,200 W 220 H 420 mm 0,15 G 0,15 W 0,15 G H 0,15 G mm |
| - Fluid tank capacity | 4 Liters (1.05 gallon) | - Weight | 25 kg (55.1 lbs) |
| - Compatible fluid | Antari F.L.C. Super Light Fog Fluid | | |
| - Ambient temp / range | 0°C - 40°C (32°F - 104°F) | | |
| - Output | 10 meters height | | |
| - Control | Manual, Timer, DMX 512, Master / Slave, Wireless Wireless DMX (Optional) | | |



WIFI-IR Remote Control



WIFI-AC

M-7X Stage Fog Jet



Part No. DMG 2.07247942 2.02222999 | DMG M-7X 1770

| | | | |
|-----------------------|-------------------------------------------------------------------------------|------------------------|--------------------------------------------------------------|
| - Input voltage | 00 model: AC 100-120V, 50/60Hz 10A 01 model: AC 220-240V, 50/60Hz 4.5A | - DMX channels | 9 channels |
| - Rated power | 100W | - Connection | Neutrik TRS 1 Connector (Power) XLR 3-pin and 5-pin (DMX) |
| - Light source | 22 X 3W LED (Blue, Green, Blue, Green) | - Included accessories | W-2 Wireless Radio Transmitter |
| - Warm-up time | 7 minutes (approx.) | - Optional accessories | WTR-PC Wireless DMX |
| - Fluid consumption | 200 ml/min | - Dimension | 1.514 W 114 H 303 mm 0.5142 W 74 H 120 (inch) |
| - Fluid tank capacity | 2.4 Liters (0.62 gallon) | - Weight | 1.4 kg (3.08 lbs) |
| - Compatible fluid | Artan FLC Super Light Fog Fluid | | |
| - Ambient temp. range | 0°C - 40°C (32°F - 104°F) | | |
| - Output | 30 meters height | | |
| - Control | Manual, Timer, DMX 512 Master / Slave, Wireless Wireless DMX (Optional) | | |

2-Way
Wireless Remote Control

19.4 Flight Case

Z-1520 Two-Way Fog Jet

Part No. (Case) Z-1520/19.4 (2-Way) Z-1520/19.4 (19.4) (Case) Z-1520

| | | | |
|-----------------------|-------------------------------------------------------------------------|------------------------|---------------------------------------------------------|
| - Input voltage | US model: AC 90-120V 50/60Hz 13.5A EU model: AC 230-240V 50/60Hz 13A | - Control | Manual, Timer, DMX 512, Master / Slave, Wireless |
| - Rated power | 2100W | - DMX channels | 8 channels |
| - Light source | 22 x DM-LSD (18 Red, 7 Green, 7 Blue) | - Connection | Neutrik Powercon (Power), XLR 3-pin and 5-pin (DMX) |
| - Warm-up time | 5 minutes (approx.) | - Included accessories | W-2 Wireless Radio Transmitter |
| - Fluid consumption | 200ml/min | - Optional accessories | 19.4 Flight Case |
| - Fluid tank capacity | 2.4 Liters (0.63 gallon) | - Dimension | 1.418 W 295 x 292 mm 5.19 in W 11.61 x 11.527 (inch) |
| - Compatible fluid | Airson FLC Super Light Fog Fluid | - Weight | 16.4 kg (36.2 lb) |
| - Ambient temp. range | 0°C - 40°C (32°F - 104°F) | | |
| - Output | 4 meters height | | |

2-Way
Wireless Remote Control

19.4 Flight Case

W-715 Fog Jet

Part No. (Case) W-715/19.4 (2-Way) W-715/19.4 (19.4) (Case) W-715

| | | | |
|-----------------------|-------------------------------------------------------------------------|------------------------|---------------------------------------------------------|
| - Input voltage | US model: AC 90-120V 50/60Hz 13.5A EU model: AC 230-240V 50/60Hz 13A | - Control | Manual, Timer, DMX 512, Wireless |
| - Rated power | 1000W | - DMX channels | 1 channel |
| - Warm-up time | 7.5 minutes (approx.) | - Connection | Neutrik Powercon (Power), XLR 3-pin and 5-pin (DMX) |
| - Fluid consumption | 200 ml/min | - Included accessories | W-1 Wireless Radio Transmitter |
| - Fluid tank capacity | 2.4 Liters (0.63 gallon) | - Optional accessories | 19.4 Flight case |
| - Compatible fluid | Airson FLC Super Light Fog Fluid | - Dimension | 1.418 W 295 x 292 mm 5.19 in W 11.61 x 11.527 (inch) |
| - Ambient temp. range | 0°C - 40°C (32°F - 104°F) | - Weight | 15.3 kg (34.7 lb) |
| - Output | 8 meters height | | |



M-4 Stage Fog Jet

Part No. 22040 2.220400001 1 Channel Remote DMX

| | |
|-----------------------|--------------------------------------------------------------------------|
| - Input voltage | DM model: AC 110-120V 50/60Hz 1.2A EM model: AC 220-240V 50/60Hz 1.6A |
| - Rated power | 1000W |
| - Warm-up time | 5 minutes (approx.) |
| - Fluid consumption | 120 ml/min |
| - Fluid tank capacity | 2.4 Liters (0.63 gallon) |
| - Compatible fluid | Ampro FLC Super Light Fog Fluid |
| - Ambient temp. range | 0°C - 40°C (32°F - 104°F) |
| - Output | 4 meters height |
| - Control | Manual, Tracer, DMX 1/2 Wireless (DMX) / Wireless (DMX Control) |

| | |
|------------------------|---------------------------------------------------------------------------------------|
| - DMX channels | 1 channel |
| - Connection | Multi-9 Powercon (Power) LR5-pin and 5-pin DMX |
| - Optional accessories | W-2340 PCIR Wireless DMX W70-30 Wireless Remote W70-100 Wireless DMX and Remote |
| - Dimension | L 244 x W 190 x H 391 mm L 9.61 x W 7.48 x H 15.39 (inch) |
| - Weight | 11 kg (24.25 lbs) |



Z-1020 Two-Way Fog Jet

Part No. 22040 2.220400001

| | |
|-----------------------|------------------------------------------------------------------------|
| - Input voltage | DM model: AC 110-120V 50/60Hz 1A EM model: AC 220-240V 50/60Hz 1.5A |
| - Rated power | 1000W |
| - Warm-up time | 12 minutes (approx.) |
| - Fluid consumption | 120 ml/min |
| - Fluid tank capacity | 2.4 Liters (0.63 gallon) |
| - Compatible fluid | Ampro FLC Super Light Fog Fluid Ampro FLC Light Fog Fluid |
| - Ambient temp. range | 0°C - 40°C (32°F - 104°F) |
| - Output | 5 meters height |
| - Control | Manual, DMX 1/2 Tracer (Optional), Wireless (DMX) |

| | |
|------------------------|------------------------------------------------------------------------------------------------------------------------------------------------------------|
| - DMX channels | 1 channel |
| - Connection | 6C (Power) LR5-pin (DMX) |
| - Included accessories | 2-30 Cable Remote |
| - Optional accessories | 2-40 Cable Tracer Remote 2-30 Wireless Remote FX-4 Flight Case L 438 x W 215 x H 391 mm L 17.24 x W 8.47 x H 15.39 (inch) 11 kg (24.45 lbs) |
| - Dimension | |
| - Weight | |



IP-1000 IP-Rated Fog Machine

Part No. 000000 000000 000000

| | | | |
|---------------------|--------------------------------------------------------------------------|------------------------|---------------------------------------------------------------------------|
| - Input voltage | ES model - AC 100-200V 50/60Hz 9A EU model - AC 220-240V 50/60Hz 4.5A | - Ambient temp. range | 0°C - 40°C (32°F - 104°F) |
| - Rated power | 1070W | - Control | Manual |
| - Warm-up time | 2-5 minutes (approx.) | - Included accessories | IP-1000 Cartridge 1, 205 W 2xH x 200 mm E, 12.18 W 9.82 H 1.78 inch |
| - Fluid consumption | 90 ml/min | - Dimension | 8.6 kg (19.42 lbs) |
| - Compatible fluid | Amban FL3 Heavy Fog Fluid Amban FL4 Light Fog Fluid | - Weight | |



IP-1500 IP-Rated Fog Machine

Part No. 000000 000000 000000

| | | | |
|-----------------------|---------------------------------------------------------------------------|------------------------|------------------------------------------------------|
| - Input voltage | ES model - AC 100-200V 50/60Hz 10A EU model - AC 220-240V 50/60Hz 4.5A | - Control | Manual, Timer, DMX512, Wireless |
| - Rated power | 1650W | - DMX channels | 3 channel |
| - Warm-up time | 3-5 minutes (approx.) | - Included accessories | W-1 Wireless Radio Transmitter Hanging Bracket |
| - Fluid consumption | 100 ml/min | - Connection | XLR 5-pin (DMX) |
| - Compatible fluid | Amban FL3 Heavy Fog Fluid Amban FL4 Light Fog Fluid | - Dimension | 1, 445 W 222 H 250 mm E, 18.21 W 8.74 H 9.84 inch |
| - Ambient temp. range | 0°C - 40°C (32°F - 104°F) | - Weight | 12.5 kg (27.56 lbs) |



MB-1 Mobile Fog Machine



| | |
|-----------------------|-----------------------------------------------------------|
| - Input voltage | DC 12V (Battery) AC 100-240V, 50/60Hz (Battery charge) |
| - Rated power | 75W |
| - Warm-up time | 3 second (approx.) |
| - Fluid consumption | 1.1 ml/min (MAX Output) |
| - Fluid tank capacity | 100ml (3.33 gallon) |
| - Compatible fluid | Artan FUM-003 Fog Fluid |
| - Ambient temp. range | 0°C - 40°C (32°F - 104°F) |
| - Control | Manual Timer (Optional) / Wireless (Optional) |

| | |
|------------------------|----------------------------------------------------------------------------------------|
| - Included accessories | MB-01 Battery (MB-1-SC Charger FUM-003 Fog Fluid 500ml, Rightcase) |
| - Optional accessories | DEP-12 Power Adapter and Battery MCT-2 Cable Tether Remote MCR-9 Wireless Remote |
| - Dimension | 1.235 W x 0.472 mm 0.818 W x 0.447 inch |
| - Weight | 1kg (without Battery) (2.2 lbs) 1.8 kg (with Battery) (3.97 lbs) |



MB-20X KIT

1. MB-20X Mobile Fog Machine | 2. Case | 3. Charger | 4. FJM-20P Bottle of 900ml



MB-20X Mobile Fog Machine



| | | | |
|-----------------------|-------------------------------------------------------------------|------------------------|--------------------------------------------------------------------------------------|
| - Input voltage | DC 12V (Battery) | - Connection | 3/8" 3-gal (3M) |
| - Rated power | AC 100 - 240V 50/60Hz (Battery charged) | - Included accessories | MB-20-S Battery MB-20-SC Charger FJM-20P Fog Fluid 900ml FFS-201 Light Case |
| - Warm-up time | Two second (approx.) | - Optional accessories | 2-3 Cable Remotes WTR-20S Wireless Remote MB-20S Power Boost |
| - Fluid consumption | 16 ml/min | - Dimension | 1.203 W x 0.8 x 2.06 H in 3.154 W x 2.03 H x 5.27 H in |
| - Fluid tank capacity | 0.4 Liter (0.11 gallon) | - Weight | 0.3 kg (0.76 lbs) |
| - Compatible fluid | Antari FJM-20P Fog Fluid | | |
| - Ambient temp. range | 0°C - 40°C (32°F - 104°F) | | |
| - Control | Manual, (SM212) Wireless (Optional) Cable Remote (Optional) | | |
| - DMX channels | Two channel | | |



SCAN QR CODE

MC-11
Cable RemoteFCS-1
Wireless Remote Control

MB-55 Pumpless Off-Mains Capable Fog Machine



| | | | |
|-----------------------|-----------------------------------------------------------------------|------------------------|-------------------------|
| - Input voltage | US model: AC 100-120V 50/60Hz 10A EU model: AC 220-240V 50/60Hz 4A | - Control | Manual |
| - Rated power | 1450W | - Connection | EC (Power) |
| - Warm-up time | 1.5 minutes (approx.) | - Included accessories | MC-1 Cable Remote |
| - Fluid consumption | 70 ml/min | - Optional accessories | FCS-1 Wireless Remote |
| - Compatible fluid | Aston FLP-700 Aerosol (Aerosol included) | - Dimension | 1346 W152 X251 mm |
| - Ambient temp. range | 0°C - 40°C (32°F - 104°F) | - Weight | 8.20 kg (18.08 lbs net) |



SCAN QR CODE



F-7 Smaze



| | | | |
|------------------------------|------------------------------------------------------------------------------------------------------------------------------------------|------------------------------|-------------------------------------------------------|
| - Input voltage | US model: AC 100-120V 50/60Hz 13.5A EU model: AC 220-240V 50/60Hz 7A | - Operating time | Faze Mode 2.8 hrs at max. output |
| - Rated power | 1600W | - Ambient temp. range | 0°C - 40°C (32°F - 104°F) |
| - Warm-up time | 8 minutes (approx.) | - Control | Manual, Timer, (3x) 3/2 Wireless DMX |
| - Fluid consumption | Faze Mode: 50ml/min Faze Mode: 28ml/min | - DMX channels | 3 channels |
| - Fluid tank capacity | 3 Liters (0.32gal) x 2 Pcs | - Connection | Neutrik Powercon (Power) 3/8 3-pin and 5-pin (DMX) |
| - Compatible fluid | Antari F18-SE Heavy Fog Fluid Antari F18-SE Heavy Smoke Longlasting (smoke)/Foil Antari F12-SE Faze Effects Fluid Longlasting Time | - Dimension | 1129 W 428 H 179 mm 6 29.66 W 8.93 H 28.31 inch |
| | <small>DMX application is available for additional cost. May 2020</small> | - Weight | 32.3 kg (75.74 lbs) |



SCAN QR CODE



© 2015 FFAZ

F-4 Fazer

| | | | |
|-----------------------|--------------------------------------------------------------------------------------|------------------------|-----------------------------------------------------|
| - Input voltage | IS model: AC 100-105V 50 / 60Hz 12.5A E3 model: AC 220-240V 50 / 60Hz 6.3A | - Ambient temp range | 0°C - 40°C (32°F - 104°F) |
| - Rated power | 1650W | - Control | Manual, 0-60SEC Timer Wireless (D40) (Optional) |
| - Warm-up time | 1 minutes (approx.) | - D40 channels | 2 channels |
| - Fluid consumption | 4.7 ml/min | - Connection | 3/8" S-pit and 5-pit (D40) |
| - Fluid tank capacity | 5 L (1.32 gallon) | - Optional accessories | W-D40-PC3R Wireless D40 |
| - Compatible fluid | Amber FLJ-SI Heavy Fog Fluid Amber FLJ-SI Heavy Density 6.0mg/long time fog fluid | - Dimension | L 545 W 458 H 205 mm S 21.44 W 18.03 H 8.07 inch |
| - Operating time | 12 hrs at max. output | - Weight | 20.2 kg (44.75 lbs) |



SCAN QR CODE

OPTIONAL
W-DH-PCBOPTIONAL
WTS-12OPTIONAL
WTS-40

F-1 Fazer

Power by (Eaton)

OPTIONAL



OPTIONAL

OPTIONAL

OPTIONAL

| | |
|-----------------------|------------------------------------------------------------------------------------------------------------------------------------------------------------------------------------------|
| - Input voltage | 02 model: AC 100-120V 50 / 60Hz 4.8A 03 model: AC 220-240V 50 / 60Hz 3.5A |
| - Rated power | 800W |
| - Warm-up time | 4.5 minutes (approx) |
| - Fluid consumption | 8.5 ml/min |
| - Fluid tank capacity | 2.4 Liters (0.63 gallon) |
| - Compatible fluid | Antari FLS Heavy Fog Fluid Antari FLK Heavy Density Fog/Langlang Time Fog/Lud Antari FLJ Face Effects Fog/Langlang Time Only applicable to machines manufactured after May 2019 |
| - Operating time | 4.5 hrs at max output |
| - Ambient temp. range | 0°C - 40°C (32°F - 104°F) |

| | |
|------------------------|--------------------------------------------------------------------------------|
| - Control | Manual, DM302, Timer Wireless (Optional) Wireless DM4 (Optional) |
| - DM3 channels | 2 channels |
| - Connection | Neutrik Powercon (Power) XLR 3-pin and 5-pin (DM3) W-DH-PCB Wireless DM3 |
| - Optional accessories | WTS-12 Wireless Remote WTS-40 Wireless DM3 and Remote |
| - Dimension | L 670 W 275 H 327 mm 6.2x3.3x3.3 (2.47x1.31x1.31 inch) |
| - Weight | 3.1kg (6.83 lb) |



Z-390 Fazer



| | |
|-----------------------|--------------------------------------------------------------------------|
| - Input voltage | U3 model: AC 100-120V 50/60Hz 8.5A U2 model: AC 220-240V 50/60Hz 6.5A |
| - Rated power | 120W 1000W 240V 1450W |
| - Warm-up time | 15 minutes (approx.) |
| - Fluid consumption | 8 mL/min |
| - Fluid tank capacity | 4 Liters (1.06 gallon) |
| - Compatible fluid | Amert FL3 Heavy Fog Fluid |
| - Operating time | 8 hrs at max. output |
| - Ambient temp. range | 0°C - 40°C (32°F - 104°F) |
| - Control | Manual, DM5122 Tower Wireless (Optional) |

| | |
|------------------------|--------------------------------------------------------------------------------------------|
| - DMX channels | 2 channels |
| - Connection | 8C (Power) XLR 3-pin and 5-pin (DMX) |
| - Optional accessories | Hanging bracket 7-3 Cable Remote |
| - Dimension | W18 x D1 without handle L 368 W 273 x H 320 & mm S. 14.4" W 10.75" x H 12.62" (incl) |
| - Weight | 9.6 kg (21.2 lb) |



Z-350 Fazer

Model: U3 | U2 | U1 | U0 | U000 | U0000 | U00000 | U000000 | U0000000 | U00000000

| | |
|-----------------------|-----------------------------------------------------------------------------|
| - Input voltage | U3 model: AC 100-120V 50/60Hz 6.5A U2 model: AC 220-240V 50/60Hz 3.75A |
| - Rated power | 120W 700W 240V 700W |
| - Warm-up time | 4.5 minutes (approx.) |
| - Fluid consumption | 3 mL/min |
| - Fluid tank capacity | 1.3 Liters (0.34 gallon) |
| - Compatible fluid | Amert FL3 Heavy Fog Fluid Amert FL3 Heavy Density & Long-Range Fog Fluid |
| - Operating time | 7 hrs at max. output |
| - Ambient temp. range | 0°C - 40°C (32°F - 104°F) |

| | |
|------------------------|--------------------------------------------------------------|
| - Control | Manual, DM5122 |
| - DMX channels | 2 channels |
| - Connection | 8C (Power) XLR 3-pin (DMX) |
| - Optional accessories | 7-3 Cable Remote FZ-350 Flight Case FZ-4 Flight Case |
| - Dimension | L 320 W 163 x H 215 mm S. 12.62" W 6.42" x H 8.47" (incl) |
| - Weight | 8.5 kg (18.74 lbs) |





HZ-1000 Haze Machine



| | | | |
|-----------------------|-----------------------------------------------------------------------------------|------------------------|------------------------------------------------------------------|
| - Input voltage | US model: AC 100-120V 50/60Hz 9.5A EU model: AC 220-240V 50/60Hz 4.5A 1000W | - DMX channels | 2 channels |
| - Rated power | 1000W | - Connector | Neutrik TRS 1 Connector (Power) RLR 3-pin and RLR 5-pin (DMX) |
| - Fluid consumption | 2.2 m3/min | - Optional accessories | W-DND-PC03H Wireless DMX |
| - Fluid tank capacity | 5.4 Liters (1.4 gal) (air) | - Dimension | L: 670 x 570 x 410 mm S: 27.2 x 22.5 x 16.2 (inch) |
| - Compatible fluid | Antari HD Haze Fluid | - Weight | 71.4 kg (156.4 lbs) |
| - Operating time | 43 hrs max. output | | |
| - Ambient temp. range | 0°C - 40°C (32°F - 104°F) | | |
| - Control | Manual, Timer, DMX512 Wireless DMX (Optional) | | |



ETL
Listed
Product
Complies with
UL 60950-1
and UL 1950



HZ-500 Haze Machine

Part No. 27496 27497 27507

- **Input voltage** US model: AC 100-120V 50/60Hz 3.5A
EU model: AC 220-240V 50/60Hz 1A
- **Rated power** 100W 400W
240W 400W
- **Fluid consumption** 1.5ml/min
- **Fluid tank capacity** 2.5 Liters (0.66 gallon)
- **Compatible fluid** Artist HD Haze-Fluid
- **Operating time** 27 hrs at max. output

- **Ambient temp. range** 0°C - 40°C (32°F - 104°F)
- **Control** Manual, Timer (240/12)
- **DMX channels** 1 channel
- **Connection** EC (Power)
XLR 5-pin (DMX)
- **Dimension** 1.68 W 3.01 H 3.31 inch
6.99 W 12.68 H 13.31 inch
- **Weight** 31.5 kg (69.45 lbs)



HZ-400 Haze Machine

Part No. 27496 27497 27507

- **Input voltage** US model: AC 100-120V 50/60Hz 2.10A
EU model: AC 220-240V 50/60Hz 2A
- **Rated power** 470W
- **Fluid consumption** 1.1ml / min
- **Fluid tank capacity** 2.5 Liters (0.66 gallon)
- **Compatible fluid** Artist HD Haze-Fluid
- **Operating time** 27 hrs at max. output
- **Ambient temp. range** 0°C - 40°C (32°F - 104°F)
- **Control** Manual, Timer (240)
Wireless (Optional)

- **DMX channels** 1 channel
- **Connection** EC (Power)
XLR 5-pin (DMX)
- **Included accessories** HC-1 Cable Timer Remote
- **Optional accessories** HC-1 Wireless Remote
- **Dimension** 1.50 W 3.20 H 3.29 inch
6.09 W 12.68 H 13.28 inch
- **Weight** 18.3 kg (40.37 lbs)



HZ-350 Haze Machine

Power 50 1000W 230V 50/60Hz

| | |
|-----------------------|---------------------------------------------------------------------------|
| - Input voltage | US model: AC 100-120V 50/60Hz 3.25A EU model: AC 220-240V 50/60Hz 1.7A |
| - Rated power | 300W |
| - Fluid consumption | 0.8 ml/min |
| - Fluid tank capacity | 2.3 Liters (0.6 gallon) |
| - Compatible fluid | Antari HD Haze Fluid |
| - Operating time | 52 hrs at max. output |
| - Ambient temp. range | 0°C - 40°C (32°F - 104°F) |
| - Control | Manual, Timer, DMX, Wireless |

| | |
|------------------------|---------------------------------------------------|
| - DMX channels | 1 channel |
| - Connection | EC (Power) BLR 5-pin (DMX) |
| - Included Accessories | W-1 Wireless Radio Transmitter |
| - Optional accessories | HC-1 Cable Timer Remote |
| - Dimension | 1.41D W 275 H 275 mm 5.16 D W 10.79 H 10.83 in |
| - Weight | 5.2 kg (11.37 lbs) |



HC-1

Cable Timer Remote



W-1

Wireless Remote



HZ-100 Haze Machine

Power 50 1000W 230V 50/60Hz

| | |
|-----------------------|---------------------------------------------------------------------------|
| - Input voltage | US model: AC 100-120V 50/60Hz 3.25A EU model: AC 220-240V 50/60Hz 1.7A |
| - Rated power | 300W |
| - Fluid consumption | 0.7 ml/min |
| - Fluid tank capacity | 2.5 Liters (0.66 gallon) |
| - Compatible fluid | Antari HD Haze Fluid |
| - Operating time | 63 hrs at max. output |
| - Ambient temp. range | 0°C - 40°C (32°F - 104°F) |

| | |
|------------------------|--------------------------------------------------|
| - Control | Manual Timer (Optional), Wireless (Optional) |
| - Connection | EC (Power) |
| - Optional accessories | HC-1 Cable Timer Remote WCR-1 Wireless Remote |
| - Dimension | 1.466 W 250 H 276 mm 5.772 W 9.84 H 10.87 in |
| - Weight | 10.2 kg (22.5 lbs) |



HC-1

Cable Timer Remote



WCR-1

Wireless Remote

DNG-250 Low Fog Generator

| | |
|-------------------------|----------------------------------------------------------------|
| - Input voltage | US model: AC 100-120V 50/60Hz EU model: AC 220-240V 50/60Hz |
| - Refrigerant | 1029R - 404A, 116.8 (3.9kg) 1A29R - 404A, 116.8 (3.9kg) |
| - Start current | 102V / 77.4A 1A29V / 36.9A |
| - Rated power | 102V / 9.2A 1A29V / 4.5A |
| - Fog power consumption | 102V / 1600W 12.5A 1A29V / 1600W 6.8A |
| - Warm-up time | 6 minutes (approx.) |
| - Fluid consumption | 100 ml/min |
| - Fluid tank capacity | 10 Liters (2.64-gallon) |
| - Compatible fluid | Artisan FLL Low Fog (Effects Fluid) |
| - Ambient temp range | 5°C - 42°C (47°F - 104°F) |
| - Output | 100 m ³ /min |
| - Control | Manual, Timer, DMG 512 |
| - DMG channels | 1 channel |
| - Connection | Matrix Power (120V/240V) N.R.T.S. pin (not 2, not 3, not 4) |

| | |
|------------------------|------------------------------------------------------|
| - Optional Accessories | F200-250 Flight Case |
| - Dimension | L 760 W 628 H 775 mm (30.3" W 24.7" H 30.5" inch) |
| - Weight | 100 kg (220.4 lbs) |



www.dmg.com



F200-250
Flight Case

DNG-200 Low Fog Generator

| | |
|-------------------------|----------------------------------------------------------------|
| - Input voltage | US model: AC 100-120V 50/60Hz EU model: AC 220-240V 50/60Hz |
| - Refrigerant | 1029R - 404A, 116.8 (3.9kg) 1A29R - 404A, 116.8 (3.9kg) |
| - Start current | 102V / 6A 1A29V / 2.9A |
| - Rated power | 102V / 4.7A 1A29V / 2.2A |
| - Fog power consumption | 102V / 1600W 12.5A 1A29V / 1600W 6.8A |
| - Warm-up time | 102V / 25 minutes (approx.) 1A29V / 12 minutes (approx.) |
| - Fluid consumption | 100 ml/min |
| - Fluid tank capacity | 10 Liters (2.64-gallon) |
| - Compatible fluid | Artisan FLL Low Fog (Effects Fluid) |
| - Ambient temp range | 5°C - 42°C (47°F - 104°F) |
| - Output | 80 m ³ /min |
| - Control | Manual, Timer, DMG 512 |
| - DMG channels | 1 channel |
| - Included accessories | 5-20 Remote |
| - Optional Accessories | F200-250 Flight Case |
| - Dimension | L 760 W 628 H 775 mm (30.3" W 24.7" H 30.5" inch) |
| - Weight | 100 kg (220.4 lbs) |



www.dmg.com



5-20
Remote



F200-250
Flight Case



SCAN QR CODE

FOG COOLER
DNG-100

DNG-100 Fog Cooler

Part No. D10000 100W

| | |
|------------------------|----------------------------------------------------------------|
| - Input voltage | US model: AC 100-120V 50/60Hz EU model: AC 220-240V 50/60Hz |
| - Rated power | 100W/750W 240W/600W |
| - Refrigerant | 120V 0-10A4, 1.36L (0.43kg) 240V 0-10A4, 1.36L (0.43kg) |
| - Start Current | 100 / 41A 240V / 29A |
| - Rated Current | 100 / 4.7A 240V / 2.2A |
| - Ambient temp. range | 0°C - 40°C (32°F - 104°F) |
| - Control | On/Off switch control |
| - Included accessories | FT-10 Fog Collecting Tube, FTA-11 |
| - Fogged accessories | F1K-1, F1K-2, F1K-3 |
| - Dimensions | 1.79A x 0.43B x 0.29H (mm) |
| - Substrate | Substrate: 20.00 x 10.00 (inch) |
| - Weight | 7.2 kg/15.97 lbs |



F1K-1



F1K-2



F1K-3



FTA-11



F1A-1

ICE-101 ICE Fog Machine

Part No. D10000 100W 340A

| | |
|------------------------|---------------------------------------------------------------------------------------------------|
| - Input voltage | US model: AC 100-120V 50/60Hz 1.5A EU model: AC 220-240V 50/60Hz 5A |
| - Rated power | 100W |
| - Warm-up time | 4.5 minutes (approx.) |
| - Fluid consumption | 25 ml/min |
| - Fluid tank capacity | 2.5 liters (0.66 gallon) |
| - Compatible fluid | Antar FL1 Low Fog (Effects Fluid) Antar FL2 Super Light Fog Fluid Antar FL3 Light Fog Fluid |
| - Ambient temp. range | 0°C - 40°C (32°F - 104°F) |
| - Output | 42 ml / min |
| - Control | Manual, Timer, DMX 512 |
| - DMX channels | 1 channel |
| - Connection | 8C (Power) |
| - Included accessories | 10R-3 pin (DMX) |
| - Dimension | 2-8 Cable Tamer Remote 1.640 W x 0.512 H x 0.432 mm |
| - Weight | 0.25 W x 0.29 H x 0.44 (inch) 24.6 kg (54.29 lbs) |



SCAN QR CODE



10R-3 pin DMX



SPECIAL EFFECTS



S-500 & S-500L Snow Machine



PowerW 120V | Dimensions: | Cable: 2.0000000001.1 | Control: wireless | Product:

S-500 Specification

| | |
|------------------------------|---------------------------------------------------------------------------------------------------------------------------------------------------------------------------------------------------------------------------------------------------------------------|
| - Input voltage | US model: AC 100-120V 50/60Hz 1.5A EU model: AC 220-240V 50/60Hz 3.6A |
| - Rated power | 100V 950W 240V 970W |
| - Fluid consumption | 400 ml/hour |
| - Fluid tank capacity | 20L (4.95 US gallon) |
| - Compatible fluid | Antoni S-200 Snow & Ice Fog Fluid (new formula) Antoni S-200 Premium Snow Fog Fluid (new formula) Antoni S-200 Super Dry Snow Fog Antoni S-200 Anti-Freezing Snow Fog Antoni S-200 UV Snow Fog Antoni S-200 UV Snow Fog Mistral, Frost, Snow, Fog |
| - Ambient temp. range | 0°C - 40°C (32°F - 104°F) |
| - Control | Wireless (2channel), Wireless DMX (2channel) |

| | |
|-------------------------------|-----------------------------------------------------------------------------------------------------------------------------------------------------------------------------------------------------------------------------|
| - DMX channels | 2 channels |
| - Connection | Bluetooth / Powerlink / Powerlink XLR 3-pin and 5-pin DMX |
| - Included accessories | ST-10 10 Motor Extension Hose |
| - Optional accessories | W-DMX-1200 Wireless DMX W70-20 Wireless Remote W70-70 Wireless DMX and Remote SC-3 Cable Reel ST-40 10 Motor Extension Hose PW-10 Fan Motor L 100 W 50 H 40 mm S 200 W 210 H 250 mm 27.2 kg (60 lb) |
| - Dimension | |
| - Weight | |

S-500L Specification

| | |
|-------------------------------|------------------------------------------------------------|
| - Included accessories | ST-10 10 Motor Extension Hose x2 pcs L 100 W 40 H 40 mm |
| - Dimension | S 210 H 230 W 425 all inch |
| - Weight | 44.4 kg (97.7 lb) |



Scan QR code



certified to UL 60900
UL ETL LISTED





SW-300 Snow Machine



| | | | |
|------------------------|--------------------------------------------------------------------------------------------------------------------------------------------------------------------------------------------------------|------------------------|----------------------------------------------------------------|
| - Input voltage | US model: AC 100-120V 50/60Hz 1.5A EU model: AC 220-240V 50/60Hz 1.5A | - 24K channels | 2 channels |
| - Rated power | 100W | - Connection | KCP/DMX512 E1X 3-pin DMX |
| - Fluid consumption | 250 ml/min (200% output) | - Included accessories | W-1 Wireless Radio Transmitter Hanging Bracket |
| - Fluid tank capacity | 5 liters (1.32 gallon) | - Optional accessories | SC-2 Cable Remote SW-300-19 Floor Bracket |
| - Compatible fluid | Artan/SJ-A Snow & Frost Fluid (water based) Artan/SJ-89 Professional Snow Fluid (water based) Artan/SJ-4 Super Dry Snow Fluid Artan/SJ-2 Anti-Freezing Snow Fluid Artan/SJ-320N Snow Fluid | - Dimension | 1,300 W x 270 D x 210 H mm 51.18 W x 10.63 D x 82.27 H (in) |
| - Ambient temp / range | 0°C - 40°C (32°F - 104°F) | - Weight | 11.5 kg (25.35 lbs) |
| - Control | Manual, Timer DMX512 Wireless | | |



CONNECT



ETL
Listed
Product
Complies with
UL 1004, 1008
and 1009



SW-250 Wireless Snow Machine

ITEM NO. 250000 250000 250000 250000

SW-250 Specification



- **Input voltage** 95 model: AC 100-220V 50/60Hz 10.8A
100 model: AC 220-240V 50/60Hz 3.6A
- **Rated power** 100V DDM
240V 100W
- **Fluid consumption** 140 ml/min
- **Fluid tank capacity** 3 Liters (0.82 gallon)
- **Compatible fluid** Arctic® Snow & Frost Foam
Arctic® SL 4 Premium Snow Foam
Arctic® SL 4 Snow & Frost Foam (Snow & Frost)
Arctic® SL 4B Premium Snow Foam (Snow & Frost)
Arctic® SL 4 Super Dry Snow Foam
Arctic® SL 4 Anti-Freezing Snow Foam
Arctic® SL 4-100 Snow Foam

SW-250X Specification

- **Optional accessories** WS-10 Wireless Remote
SC-2 Cable Remote
SN-200 FE Floor Bracket



WS-10
Wireless Remote



SN-200 FE
Floor Bracket

- **Ambient temp. range** 0°C - 40°C (32°F - 104°F)
- **Control** Manual, Timer
SMB 5/2 Wireless
- **DMX channels** 1-channel
- **Connection** XLR (Power)
4 RS-485 DMX
- **Included accessories** WS-1 Wireless Remote Transmitter
Wiring Diagram
SC-2 Cable Remote
- **Optional accessories** SN-200 FE Floor Bracket
- **Dimension** L: 596 W: 276 H: 210 mm
\$ 21.25" W 10.91" H 12.01" (incl.)
- **Weight** 11.3 kg (25.25 lbs)



WS-10
Wireless Remote



SN-200 FE
Floor Bracket



SC-2
Cable Remote



Scan to View



S-200X Snow Machine

Part No. 044000 0000 000000 000000

| | |
|----------------------------|-----------------------------------------------------------------------------------------------------------------------------------------------------------------------------------------------------------------------------------------------------------------------------|
| Input voltage | US model: AC 100-120V 50/60Hz 1.5A EU model: AC 220-240V 50/60Hz 3.8A |
| Rated power | 300W |
| Fluid consumption | 140 ml/min |
| Fluid tank capacity | 5 Liters (1.32 gallon) |
| Compatible fluid | Arctic® S, Snow & Foam Fluid Arctic® S, A Premium Snow Fluid Arctic® S, R Snow & Foam Fluid (New Formula) Arctic® S, AR Premium Snow Fluid (New Formula) Arctic® S, R Super Dry Snow Fluid Arctic® S, CA15 Freezing Snow Fluid Arctic® S, DR20 Snow Fluid |

| | |
|-----------------------------|---------------------------------------------------------|
| Ambient temp. range | 1°C - 40°C (32°F - 104°F) |
| Control | Manual, DM1512 |
| DM channels | 1 channel |
| Connection | EC (Power) UL3 pin (DM) |
| Included accessories | Hanging Bracket SC-2 Cable Remova |
| Optional accessories | SN-300-FB Floor Bracket |
| Dimension | L 505 W 276 H 270 mm 6.19 8.8 W 10.81 H 10.23 (inch) |
| Weight | 13.5 kg (29.75 lb) |



Scan to View



S-100X Snow Machine

| | |
|----------------------------|-----------------------------------------------------------------------------------------------------------------------------------------------------------------------------------------------------------------------------------------------------------------------------|
| Input voltage | US model: AC 100-120V 50/60Hz 1.5A EU model: AC 220-240V 50/60Hz 3.8A |
| Rated power | 300W |
| Fluid consumption | 140 ml/min |
| Fluid tank capacity | 5 Liters (1.32 gallon) |
| Compatible fluid | Arctic® S, Snow & Foam Fluid Arctic® S, A Premium Snow Fluid Arctic® S, R Snow & Foam Fluid (New Formula) Arctic® S, AR Premium Snow Fluid (New Formula) Arctic® S, R Super Dry Snow Fluid Arctic® S, CA15 Freezing Snow Fluid Arctic® S, DR20 Snow Fluid |

| | |
|-----------------------------|---------------------------------------------------------|
| Ambient temp. range | 1°C - 40°C (32°F - 104°F) |
| Control | Manual, DM1512 |
| DM channels | 1 channel |
| Connection | EC (Power) UL3 pin (DM) |
| Included accessories | Hanging Bracket SC-2 Cable Remova |
| Optional accessories | SN-300-FB Floor Bracket |
| Dimension | L 505 W 276 H 270 mm 6.19 8.8 W 10.81 H 10.23 (inch) |
| Weight | 13 kg (28.75 lb) |



SCAN QR CODE

S-120 Foam Machine

| | |
|-----------------------|---------------------------------------------------------------------------|
| - Input voltage | US model: AC 100-120V 50/60Hz 1.5A EU model: AC 220-240V 50/60Hz 3.8A |
| - Rated power | 800W |
| - Fluid consumption | 250 ml/min |
| - Fluid tank capacity | 5 Liter (1.32 gal/oz) |
| - Compatible fluid | Antari SL Snow Foam Fluid Antari SL-NO Snow & Foam Fluid (New Formula) |
| - Operating time | 14 mins at max. output |
| - Ambient temp. range | 5°C - 40°C (41°F - 104°F) |
| - Control | Manual |
| - Connection | EC (Power) |
| - Dimension | 1.400 W x 260 H x 300 mm (5.5142" W x 10.24" H x 11.81" inch) |
| - Weight | 12 kg (26.44 lbs) |



SCAN QR CODE

B-1
Cord/Timer RemoteB-1
Wireless Remote

B-200 High Output Bubble Machine



| | |
|-----------------------|------------------------------------------------------------------------|
| - Input voltage | US model: AC 100-120V 50/60Hz 3A EU model: AC 230-240V 50/60Hz 1.5A |
| - Rated power | 120W |
| - Fluid consumption | 50 ml/min |
| - Fluid tank capacity | 2 Liters (0.53 gallon) |
| - Compatible fluid | Antar® Bubble Fluid |
| - Operating time | 10 mins of max. output |
| - Ambient temp. range | 5°C - 40°C (41°F - 104°F) |
| - Control | Manual, DM-102 Timer (Optional) Wireless (Optional) |

| | |
|------------------------|------------------------------------------------------|
| - DM Channels | 1 channel |
| - Connection | AC Power EUR 5-pin (DM) |
| - Included accessories | Hanging Bracket |
| - Optional accessories | BC-1 Timer Remote BCR-1 Wireless Remote |
| - Dimension | 14.2" W 23.0" H 27.0" mm 5.6" W 9.1" H 10.6" inch |
| - Weight | 3 kg (6.6 lbs) |



SCAN TO VIEW



ETL
 LISTED TO THE
 REQUIREMENTS OF
 THE CANADIAN
 STANDARDS ASSOCIATION
 (CSA) AND THE
 NATIONAL ELECTRICAL
 MANUFACTURERS ASSOCIATION
 (NEMA)



B-100 Bubble Machine

| | | | |
|-----------------------|------------------------------------------------------------------------------|------------------------|------------------------------|
| - Input voltage | US model: AC 100-120V, 50/60Hz 0.25A EU model: AC 220-240V, 50/60Hz 0.25A | - Operating time | 1.4 hrs at max output |
| - Rated power | 120W 30W 240V 27W | - Ambient temp. range | 5°C - 40°C (41°F - 104°F) |
| - Fluid consumption | 6.3 ml/min | - Control | Manual |
| - Fluid tank capacity | 0.7L (0.18 gallon) | - Included accessories | Hanging bracket |
| - Compatible fluid | Artair® Bubble Fluid | - Dimension | 1.347W x 0.142D x 0.154H (m) |
| | | - Weight | 4.2 kg (9.24 lbs) |



SCAN TO VIEW



W-101
 Wireless Control

W-101 Wireless Control Bubble Machine

Model W-101W | 1200000701W



| | | | |
|-----------------------|------------------------------------------------------------------------------|------------------------|--------------------------------------------------|
| - Input voltage | US model: AC 100-120V, 50/60Hz 0.25A EU model: AC 220-240V, 50/60Hz 0.25A | - Ambient temp. range | 5°C - 40°C (41°F - 104°F) |
| - Rated power | 30W | - Control | Manual, Wireless |
| - Fluid consumption | 6.3 ml/min | - Included accessories | W-1 Wireless Radio Transmitter |
| - Fluid tank capacity | 0.7 Liters (0.18 gallon) | - Dimension | Hanging Bracket: 1.350W x 0.142D x 0.154H (m) |
| - Compatible fluid | Artair® Bubble Fluid | - Weight | 4.2 kg (9.24 lbs) |
| - Operating time | 1.4 hrs at max output | | |



Scan QR Code



AF-5X Effects Fan

| | |
|----------------------|--------------------------------------------------------------------------|
| - Input voltage | US model: AC 100-120V 50/60Hz 12A EU model: AC 220-240V 50/60Hz 3.25A |
| - Rated power | 500W |
| - Ambient temp range | 0°C - 40°C (32°F - 104°F) |
| - Air flow | 1043 CFM (High) 1547 CFM (Medium) 1081 CFM (Low) |
| - Fan speed | 1242 - 1480 rpm (AC 120V / 60Hz) 1075 - 1289 rpm (AC 220V / 60Hz) |

| | |
|------------------------|-----------------------------------------------------------------|
| - Housing Material | Flame Retarded Plastic (FR-112) |
| - Control | Manual, Timer, DMX 512 |
| - DMX channels | 1 channel |
| - Connection | XLR 5-pin (DMX) |
| - Optional accessories | AF-5X-AB Hanging Bracket |
| - Dimension | 1.558W x 0.519 x 0.578 mm 0.21 FT x 0.18 FT x 0.22 FT (inch) |
| - Weight | 11.5 kg (25.5 lb) |

AF-5XR Effects Fan

| | |
|------------------------|--------------------------|
| - Included accessories | Wifi-stick |
| - Optional accessories | AF-5X-AB Hanging Bracket |



NEW! AF-5XR
Wifi-stick



SCAN QR CODE



WTR-02



Z-3 Cable Remote



AF-4 Effects Fan



- **Input voltage** US model: AC 100-120V 50/60Hz 0.05A
EU model: AC 220-240V 50/60Hz 0.02A
- **Rated power** 100W
- **Ambient temp. range** 0°C - 40°C (32°F - 104°F)
- **Air flow** 180 CFM (AC 100V) 40m³/h
- **Fan speed** 1025 CFM (AC 220V / 40 Hz)
1342 - 1680 CFM (AC 100V / 60Hz)
1775 - 2097 CFM (AC 220V / 50Hz)
- **Control** Manual, Timer, DMX 312
Wireless (Optional)

- **DMX channels** 1 (channel)
- **Connection** 0.8 5-pin DMX
- **Optional accessories** WTR-02 Wireless Remote (AF-40)
Z-3 Cable Remote
- **Dimension** L 303 W 277 H 107 mm
L 12.0 W 10.9 H 4.2 (inches)
- **Weight** 1.9 kg (2.9 lbs)



SCAN QR CODE



WTR-02



Z-3 Cable Remote



AF-3 / AF-3X (1000 Hz)



AF-3S (1000 Hz)

AF-3 / AF-3X / AF-3S Effects Fan



- **Input voltage** US model: AC 100-120V 50/60Hz 1.7A
EU model: AC 220-240V 50/60Hz 1.53A
- **Rated power** 127W
- **Ambient temp. range** 0°C - 40°C (32°F - 104°F)
- **Air flow** 530 CFM (1000 Hz)
800 CFM (2000 Hz)
- **Fan speed** 750 - 2332 CFM (2000 Hz)
700 - 2400 CFM (3400 Hz)
- **Control** Manual, DMX 312
Wireless (Optional)
- **DMX channels** 1 (channel)
- **Connection** Neutral Power (Power)
0.8 5-pin DMX

- **Optional accessories** WTR-02 Wireless Remote
Z-3 Cable Remote
- **Dimension** AF-3 / AF-3X
L 124 W 76 H 268 mm
L 4.9 W 3.0 H 10.5 (inches)
AF-3S
L 150 W 102 H 258 mm
L 5.9 W 4.0 H 10.1 (inches)
- **Weight** AF-3 / AF-3X 4.4 kg (10.2 lbs)
AF-3S 3.4 kg (7.5 lbs)

AF-3S model does not equip with Neutral Power (Power) socket.



Fire Training Smoke Generator



IR Remote Controller



3-Phase Cord

FT-200 Fire Training Smoke Generator

Part no. 261000 02000

- **Input voltage** 03 model: AC 100-200V 50 / 60Hz 15.5A
02 model: AC 230-240V 50 / 60Hz 7A
- **Rated power** 3000W
- **Warm-up time** 7.5 minutes (approx.)
- **Fuel consumption** 270 ml/min
- **Fuel tank capacity** 2.4 Liters (0.63 gal)
- **Compatible fluid** Antari FLIP Fire Training Fog Fluid
- **Ambient temp. range** 0°C - 40°C (32°F - 104°F)
- **Output** 8 meters height

- **Control** Manual, Timer, DMCT2 Wireless
- **DMX channels** 1 channel
- **Connection** Neutral Powercon (Power)
SLP5-pin (DM2)
- **Optional accessories** 2-3 cable remote
- **Dimension** L307W195H176 mm
L11.85W7.69H6.93 inch
- **Weight** 7.4 kg (16.2 lb)



SCAN QR CODE



FT-100 Fire Training Smoke Generator

Part no. 34000 12100

| | | | |
|------------------------------|---------------------------------------------------------------------------|-------------------------------|-------------------------------------------|
| - Input voltage | US model: AC 100-120V 50 / 60Hz 15A EU model: AC 220-240V 50 / 60Hz 6A | - Control | Manual, Timer, DMX102 Wireless |
| - Rated power | 100V 1000W 240V 1430W | - DMX channels | 1 channel |
| - Warm-up time | 6.5 minutes (approx.) | - Connection | Neutric Powercon (Power) LR5-pin (DMX) |
| - Fluid consumption | 100 ml/min | - Optional accessories | 2-3 cable remote |
| - Fluid tank capacity | 4 Liters (1.06 gallon) | - Dimension | 150x127x105 mm 6.22x5.00x4.13 in |
| - Compatible fluid | Antar (FLP) Fire Training Fog Fluid | - Weight | 14.6 kg (32.3 lb) |
| - Ambient temp. range | 0°C - 40°C (32°F - 104°F) | | |



SCAN QR CODE



FT-50 Pumpless Off-Mains Capable Smoke Generator

Model No. FT50000 427036

- | | | | |
|----------------------------|---------------------------------------------------------------------------|-----------------------------|--------------------------------------------------|
| - Input voltage | US model: AC 100-120V 50 / 60Hz 10A EU model: AC 220-240V 50 / 60Hz 6A | - Ambient temp range | 0°C - 40°C (32°F - 104°F) |
| - Rated power | 1450W | - Control | Manual |
| - Warm-up time | 1.5 minutes (approx.) | - Connection | EC (Prewet) |
| - Fluid consumption | 70 ml/min | - Dimension | L346 W152 H251 mm 13.62" W5.19" H9.89" (inch) |
| - Compatible fluid | Aurora FLP-700 Aerosol | - Weight | 9.8 kg (21.67 lbs) |

FT-55 Specification



- **Included accessories** MC-1 Cable Remote
- **Optional accessories** FDR-1 Wireless Remote
- **Dimension** L346 W152 H251 mm
13.62" W5.19" H9.89" (inch)
- **Weight** 10.2 kg (22.47 lbs)



MC-1
Cable Remote



FDR-1
Wireless Remote Control



SCAN QR CODE



FT-20X KIT



1. FT-20X & Battery Smoke Generator | 2. Case (J & Chopper) & Bottle of Fog Fluid



OPTIONAL
2.2
Color Remote



OPTIONAL
W99-20
Wireless Remote



OPTIONAL
FT-2005
Power Base

FT-20X DC12V Battery-Operated Portable Smoke Generator



| | | | |
|-----------------------|-----------------------------------------------------------------|------------------------|---------------------------------------------------------------------------------------|
| - Input voltage | DC 12V (Battery) AC 100-240V, 50-60Hz (Battery charger) | - Connection | 3/8" 3-pin (3M) |
| - Rated power | 600W | - Included accessories | FT-20X-B Battery FT-20X-BC Charger FOM-ESP Fog Fluid/500ml FT1-25 Flightcase |
| - Warm-up time | 1 second (approx.) | - Optional accessories | W99-20 Wireless Remote 2-3 Cable Remote FT-2005 Power Base |
| - Fluid consumption | 1 ml/s/min | - Dimension | L210 W105 H108 mm 8.1134 W4.125 H4.27 inch |
| - Fluid tank capacity | 0.4 Liters (0.11 gallon) | - Weight | 8.5 kg (18.74 lbs) |
| - Compatible fluid | Opton FOM-ESP Fog Fluid | | |
| - Ambient temp. range | 0 °C - 40 °C (32 °F - 104 °F) | | |
| - Control | SMOS2 Manual, Wireless (Optional) Cable Remote (Optional) | | |
| - DMZ channels | 1 channel | | |



ACCESSORIES

LIQUID SUPPLY
CONTROL MODULE
REMOTE
FLIGHT CASE
BRACKET
ADAPTOR

45



LCU-2S Liquid Supply System

| | | | |
|-----------------------|---------------------------------------------------------------------------|-------------|-----------------------------------------------------------------------------------------------------------------------------------------|
| - Input voltage | US model: AC 100-120V 50/60Hz 6-6A EU model: AC 200-240V 50/60Hz 3.22A | - Dimension | Supply unit: L 179 W 107 H 64 mm Ø 3.25 W 4.57 H 3.37 (inch) Tank unit: L 158 W 103 H 248 mm Ø 4.22 W 4.06 H 9.79 (inch) |
| - Rated power | 50W | - Weight | Supply unit: 1.91 kg (4.20 lbs) Tank unit: 1.81 kg (3.97 lbs) |
| - Compatible fluid | Artisan Fluid | | |
| - Ambient temp. range | 0°C - 42°C (32°F - 104°F) | | |
| - Control | Auto | | |
| - Connection | SC (Power) XLR 3-pin (Data) | | |



LCU-1S Smart Liquid Control Unit

| | | | |
|-----------------------|---------------------------------------------------------------------------|------------------------|----------------------------------------------------|
| - Input voltage | US model: AC 100-120V 50/60Hz 6.33A EU model: AC 200-240V 50/60Hz 3.3A | - DMX channels | 1ch/anal |
| - Rated power | 40W | - Connection | XLR 3-pin (DMX) |
| - Fluid consumption | 400 ml / min | - Optional accessories | 3-6 Remote Control SC-2 Remote Control |
| - Compatible fluid | Artisan Fluid | - Dimension | L 203 W 129 H 45 mm Ø 7.79 W 5.05 H 1.78 (inch) |
| - Ambient temp. range | 0°C - 42°C (32°F - 104°F) | - Weight | 0.33 kg (0.73 lbs) |
| - Control | Manual, Timer, DMX 512 | | |



W-1 Wireless Radio Transmitter

-Working Distance : Up to 50 m (264 ft)

-Function : Wireless ON/OFF

There are 2 radio frequencies can be chosen. They are 270MHz and 433MHz respectively.

-Compatible With : AF-28, AF-300, AF-300(L), AF-200, P-200, M-4, 30-250, 30-200, W-101, W-102, W-100, W-100, W-102, W-200, W-70

-Features :

1. Simple setting and operation: one click to register, one click to go, and one click to stop.
2. Interchangeability : W-1 wireless radio transmitter is compatible with all Antari W series (signal receiver)
3. Modern metallic design favors your vision and profession.

W-2 Wireless Radio Transmitter

-Working Distance : Up to 50 m (264 ft)

-Function : Wireless ON/OFF and Volume UP/DOWN

There are 2 radio frequencies can be chosen. They are 270MHz and 433MHz respectively.

-Compatible With : AF-40, M-70, W-8, M-71, M0-200, S-500, S-200, L-800, FT-200, FT-400, FT-200

-Features :

- W-2 is the advanced version of W-1 wireless radio transmitter. Compared to W-1, the biggest difference is W-2 comes with 4 buttons, which makes it more versatile.

W-1 RECEIVER



W-2 RECEIVER



W-DMXW1R



W-DMX and W-1 Receiver

W-DMXW2R



W-DMX and W-2 Receiver

W-DMX-PCB



W-DMXR



W-DMX Receiver



There are 2 radio frequencies can be chosen. They are 270MHz and 433MHz respectively. Wireless distance may vary depending on the interference.



WTR-10 Transmitter

WTR-10 Receiver



WTR-20 Transmitter

WTR-20 Receiver



WTR-30 Transmitter

WTR-30 Receiver

WTR-10

Compatible With:
AF-3, AF-5L, F-1, S8-2502

WTR-20

Compatible With:
AF-4R, F1-200, M8-200, M-7, S-300, S-500L, T-390

WTR-30

Compatible With:
M-4



WTR-40 Transmitter

WTR-40 Receiver

W-DMX-PCB



WTR-50 Transmitter

WTR-50 Receiver



W-DMX-RX

W-DMX-PCB

WTR-40

Compatible With:
F-1

WTR-50

Compatible With:
F-1

WTR-60

Compatible With:
F-1



WTR-70 Transmitter

WTR-70 Receiver

W-DMX-PCB



WTR-80 Transmitter

WTR-80 Receiver



W-DMX-RX

W-DMX-PCB

WTR-70

Compatible With:
M-7, S-500, S-500L

WTR-80

Compatible With:
M-7, S-500, S-500L

WTR-90

Compatible With:
M-7L, S-500, S-500L, M-8, M-7D



WTR-100 Transmitter

WTR-100 Receiver

W-DMX-PCB



W-DMX-RX

W-DMX-PCB

WTR-100

Compatible With:
M-4

W-DMX-PCBR

Compatible With:
CH-1, F-1, F-4, M-4, M-7, H2-1000, S-500, S-500L

CONTROL WIRELESS TIMER MODULE

D-20

- Compatible model: DMS-200
- Cable length: 2M
- Connector: 5 Pin RJ45
- Function: Timer with interval, duration and volume; 6 Volume output choices (normal, high, medium & low volume) Set DMS address: manual ON/OFF.



M-20

- Compatible model: M-S.M-1E
- Cable length: 2M
- Connector: 5 Pin RJ45
- Function: Timer with interval, duration and volume; set DMS address; continuous tapping; manual ON/OFF.



M-21

- Compatible model: M-E
- Cable length: 2M
- Connector: 5 Pin RJ45
- Function: Timer with interval, duration and volume; set DMS address; manual ON/OFF.

M-30PRO

- **Compatible model:** M-5, M-30
- **Working distance:** Wireless distance may vary depending on the interference
- **Cable length:** 2M
- **Connector:** 3 Pin RJ45
- **Features:** Included all functions of Z-20 remote and comes with a W-11 transmitter to activate and deactivate the machine flogging. For W-1 Wireless Transmitter, there are 2 radio frequencies can be chosen: 204MHz or 432MHz.

**M-31**

- **Compatible model:** M-6
- **Working distance:** Wireless distance may vary depending on the interference
- **Cable length:** 2M
- **Connector:** 3 Pin RJ45
- **Features:** Included all functions of Z-20 remote and comes with a W-11 transmitter to activate and deactivate the machine flogging. For W-1 Wireless Transmitter, there are 2 radio frequencies can be chosen: 204MHz or 432MHz.

**Z-20**

- **Compatible model:** Z-1000, Z-3000
- **Cable length:** 2M
- **Connector:** 5 Pin RJ45
- **Function:** Tower with interval, direction and volume set. DMS add-on: continuous flogging; manual DMSF.

Z-30PRO

- **Compatible model:** Z-1000, Z-3000
- **Working distance:** Wireless distance may vary depending on the interference
- **Cable length:** 2M
- **Connector:** 3 Pin RJ45
- **Features:** Included all functions of Z-20 remote and comes with a W-11 transmitter to activate and deactivate the machine flogging. For W-1 Wireless Transmitter, there are 2 radio frequencies can be chosen: 204MHz or 432MHz.



Wireless distance may vary depending on the interference

Z-3 Remote

- Cable Length: 3ft
- Connector: 1/4 Stereo
- Function: Volume, ON/OFF
- Compatible With: AF-3, AF-4, FT-829, FT-100, W6-36, Z-100, Z-200



Z-8 Timer Remote

- Cable Length: 25 ft
- Connector: 4 Pin XLR
- Function: Timer with internal, duration set volume; continuous fogging, manual ON/OFF
- Compatible With: Z-1000, Z1-101, Z1-102, Z1

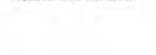
Z-9 Wireless Remote 

- Working Distance: 10 to 50 m
- Connector: 4 Pin XLR
- Function: Wireless ON/OFF
- Compatible With: Z-1000



Z-10 Remote

- Cable Length: 25 ft
- Connector: 1/4 Stereo
- Function: ON/OFF Toggle Switch
- Compatible With: Z-8000, Z-10000, Z-1000, Z-1000



Wireless distance may vary depending on the environment.

Z-40 Timer Remote

- Cable Length: 25 ft
- Connector: 1/4 Stereo
- Function: Timer with interval and shut-off mode ON/OFF
- Compatible With: Z-8001, Z-30001, Z-1000



Z-50 Wireless Remote



- Working Distance: Up to 50 m
- Connector: 1/4 Stereo
- Function: Wireless ON/OFF
- Compatible With: Z-8001, Z-10001, Z-1000



BCR-1 Wireless Remote



- Working Distance: Up to 50 m
- Connector: 1/4 Stereo
- Function: Wireless ON/OFF
- Compatible With: B-100X, B-200

BCT-1 Timer Remote

- Cable Length: 25 ft
- Connector: 1/4 Stereo
- Function: Timer with interval and shut-off mode ON/OFF
- Compatible With: B-100X, B-200



Wireless distance may vary depending on the environment.

HC-1 Timer Remote

- Cable Length: 25 ft
- Connector: 1/4 Stereo
- Function: Timer with Interval and Duration, manual ON/OFF
- Compatible With: HC-100, HC-200, HC-400



HCR-1 Wireless Remote



- Working Distance: Up to 50 ft
- Connector: 1/4 Stereo
- Function: Wireless ON/OFF
- Compatible With: HC-100, HC-400



MCR-1F Wireless Remote



- Working Distance: Up to 50 ft
- Connector: 1/4 Pin DIN
- Function: Wireless ON/OFF
- Compatible With: MS-1

MCT-2 Timer Remote

- Cable Length: 25 ft
- Connector: 1/4 Pin DIN
- Function: Timer with Interval and Duration, manual ON/OFF
- Compatible With: MS-1



Wireless distance may vary depending on the environment.

MC-1 Remote

- Cable Length: 25 ft.
- Function: Manual ON/OFF
- Compatible With: T1-55 M8-55

**FCR-1 Remote**

- Cable Length: Up to 50ft
- Function: Wireless ON/OFF
- Compatible With: M8-55 T1-55

**SC-2 Remote**

- Cable Length: 25 ft.
- Connector: 4 Pin XLR
- Function: ON/OFF and volume
- Compatible With: L32-15.5-100L.5-200L.5w. 200.5W 200L

**SC-3 Remote**

- Cable Length: 25 ft.
- Connector: 4 Pin XLR
- Function: Volume and Fan: manual ON/OFF
- Compatible With: 10W-300.5 (100L)

**SC-4 Remote**

- Cable Length: 25 ft.
- Connector: 4 Pin XLR
- Function: Volume and Fan: manual ON/OFF
- Compatible With: 5-100L



Wireless distance may vary depending on the interference

Hanging Bracket Sets



M-5-HB
Hanging Bracket
For M-5, M-6



W-575-HB
Hanging Bracket
For W-575, W-5300



SCN-600-FB
Floor Bracket
SCN-600



W-510-HB
Hanging Bracket
For W-510



SW-300-FB
Floor Bracket
S-100X, S-300X, SW-250, SW-250X, SW-300

Fluid Tubes / Adaptors / Filters



-FT-4: Arsen Fluid tube
-FT-4: Arsen Fluid tube

-FLF-4: Fluid filter for Arsen tube
-FLF-4: Fluid filter for Arsen tube



-FTB-4A
Adaptor for Arsen to Arsen
tube connection



-FTB-4B
Adaptor for Arsen to
Arsen tube connection



-FTB-4AA
T-type adaptor for two
Arsen tubes to one
Arsen tube connection

Remote Control Extension Cables



EXT-1 75 ft. extension cable
with 1/8 stereo plug



EXT-3 25 ft. extension cable with
5-pin XLR connectors

EXT-4 25 ft. extension cable with
3-pin XLR connectors

EXT-6 25 ft. extension cable with
4-pin XLR connectors



EXT-5 25 ft. extension cable with
5-pin DIN connectors



Fog Hose Adaptor

Adaptor for connecting fog conducting hose FT-10 for DMS-100 Fog Cooler to the desired Aster fog machine.

FTA-1:

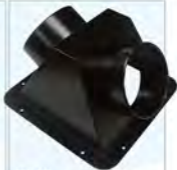
Adaptor for connecting fog conducting hose FT-10 to M-1, M-4, M-10, M-100, M-150, M-200, P-100 and P-200 fog machines, in order to achieve strategic fog placement.

FTA-2A:

The same function as the FTA-1, specifically designed for Z-10000 and Z-20000 fog machines.

FTA-3:

The same function as the FTA-1, specifically designed for Z-10000 and Z-20000 fog machines.



FTA-200 Fog Conducting Hose Adaptor

Fog conducting hose adaptor for DMS-200 and DMS-250. The hoses adaptor can be installed on it and this can split low fog output into two.



FTA-11

Fog conducting hose adaptor for DMS-100. The hoses adaptor can be installed on it and this can split low fog output into two.



FT-10 Fog Conducting Hose

Fog conducting hose with 10cm diameter and a 10 meters in length.

The DMS-100 fog cooler is equipped with an FT-10 to connect to the fog machine.

This additional hose is needed to redirect the fog output coming out of the DMS-100.

With this optional hose, fog can be extended anywhere within 10m of the DMS-100.





58

FLUID

FOG FLUID

HAZE FLUID

SNOW FLUID

BUBBLE FLUID

SCENT

FLUID

Antari premium fog fluids are optimized for use with all Antari fog machines and are suitable for use in most fogger models. All Antari fog fluids are water-based compositions that leave no oily residue and are eco-friendly to our environment and safe for human contact.

All of our fluids are odorless, non-irritating, non-toxic, and non-flammable and are designed to preserve the longevity of your machines, using Antari fog fluids in your Antari fog machine will actually increase the reliability of your fog machines for years.

Our Safety Data Sheets (MSDS) and safety reports are compiled using the strictest standards by SGS, an internationally known independent laboratory.



FLR Light Fog Fluid

FEATURES

FLR Light Fog Fluid (hot color) produces fog which disappears in the air faster.

FLG Heavy Fog Fluid

FEATURES

FLG Heavy Fog Fluid (green color) produces fog which has a longer lasting time.

AVAILABLE IN THE FOLLOWING SIZES:





FLH
Heavy Fog Superior Hang Time Fog Fluid

FLH (Clear) - Heavy Fog Superior Hang Time Fog Fluid. For use in fog and haze machines.



FLJ
Medium Blast Light Hang Time Fog Fluid

FLJ (Red Color) - Medium Density with a Light Hang Time. For use in fog machines only.



FLC Super Light Fog Fluid

FLC Super Light Fog Fluid (Clear)
For use in fog jet machines & low fog machine



FLI Low Fog Effects Fluid

FLI Low Fog Fluid (Blue color)
For low fog machine: E2-30, DMC-200, DMC-250.



FLZ Faze Effects Fluid Long Hang Time

FLZ Long Hang Time Fog Fluid (Orange color)
For use in H-7.

F-1, F-7 (manufactured after May 2020)



CHL-2 Haze Fluid

CHL-2 is a high quality oil based liquid for CH-70000s laser to produce fine and translucent haze.

The haze produced by CH-70000s liquid can set off the stage lighting beautifully and create a wonder for stage design.



Bubble Fluid

Anant bubble fluid is a water based formulation that creates vivid, transparent bubbles. For use on CH-700, 8-200 & H-101.



FLM-05S Fog Fluid

FLM-05S is a special formulated water based fluid for battery operated machine. Capable to generate pure and clean fog.

FOR USE IN:
405-1 mobile fogger



FLM-05P Fog Fluid

FLM-05P is a special formulated water based fluid for battery operated machine. Capable to generate pure and clean fog.

FOR USE IN:
405-20L, F7-20L mobile fogger



UVL-01 UV Fluorescent Agent

Anant Black UV Fluorescent Agent for use in all Snow and Bubble fluid. Turn your Snow or Bubble effect into a dramatic strobe light effect applications.

AVAILABLE IN 100ml (3.38 fl.oz) size

INSTRUCTIONS
Mix one bottle of Anant UVL-01 (100ml) with up to 5L liters of any Bubble or Snow fluid to turn your snow or bubble effect into a vibrant UV effect that will glow in the dark when used with a professional UV Blacklight. *Must be used with a UV source to achieve glowing effect.



Oil Based Haze Fluid

Specialty composed haze fluid. It's a non-toxic solution that produces a pure, translucent haze with a long hanging time.

It's compatible with Anant KC series model, KC-100/200/400/500/600. Available in 1 liter & 5 liter.

SNOW LIQUID



SL-UV Snow Fluid

The artificial snowflakes produced by UV snow fluids react to UV lights and glow in the dark with UV light sources.

COMPATIBLE MODEL

S-100X, S-200X, SW-250 / SW-250X, SW-300, S-500 / S-500L, S-600



SL-C Anti-Freezing Snow Fluid

- Anti-freezing snow fluid can satisfy the requirements of operating snow machines in low temperature environment.
- The lowest working temperature is -10°C (14°F)

COMPATIBLE MODEL

S-100X, S-200X, SW-250 / SW-250X, SW-300, S-500 / S-500L, S-600



SL-H Super Dry Snow Fluid

- SL-H can produce the highest snow volume and driest snowflakes among all Antari snow liquids.
- Good for outdoor operation.

COMPATIBLE MODEL

S-100X, S-200X, SW-250 / SW-250X, SW-300, S-500 / S-500L, S-600



SL-AN Premium Snow Fluid (New Formula)

- Compared to SL-A, the snowflakes created by SL-AN are slightly larger in size and dissipate in air quicker.
- Good for indoor and outdoor operation.

COMPATIBLE MODELS

S-800, S-200X, DM-250 / DM-250X, DM-300, S-500 / S-500L, S-600



SL-N Snow & Foam Fluid (New Formula)

- Artificial snowflake produced by SL-N is smaller in size, drier & lighter compared to SL & SL-A.
- Bigger snowflakes volume compared to SL.
- Good for indoor and outdoor operation.

COMPATIBLE MODELS

S-100X, S-200X, DM-250 / DM-250X, DM-300, S-500 / S-500L, S-600



SL-A Premium Snow Fluid

- Compared to SL, snowflakes created by SL-A are larger in volume and can dissipate in air quicker.
- Good for indoor and outdoor operation.

COMPATIBLE MODELS

S-100X, S-200X, DM-250 / DM-250X



SL Snow & Foam Fluid

- Mixed formula. Artificial snowflakes produced by it with the least irritating small and big snowflakes.
- Good for indoor and outdoor operation.

COMPATIBLE MODELS

S-100X, S-100, S-200X, DM-250 / DM-250X



MG-550 Magician

The world's smallest foam spray, the Magician produces a long lasting foam with 5-2 hours of foaming time. The Magician will foam continuously for five minutes.

A haze effect can be achieved after approximately 20 seconds of spraying in an average sized room, allowing for approximately 10 foaming sessions per can.

The Magician is designed for situations where only a relatively small amount of foam is needed. It is perfect for visible S.U. and home parties.



C-300 Cleaning and Maintenance Solution

Antair C-300 designed for maintaining pump of effects machine on its best performance.

By applying this special formulated solution on a regular basis will keep the pump at optimal condition.

Use the maintenance solution before storage will prevent the pump from dry out and clogging.

Scent



Simply put a few drops of these high quality scent into the fluid tank, the will have scented fog right away! It is fragrance by molecules in a standard 20 ml bottle. The ideal mix ratio of scent and fluid is 1:1000. For instance adding 1ml scent into 1 liter fog fluid can have the best effect of scented fog.

FLP Fire Training Smoke Fluid



FLM-D5P Smoke Fluid

FEATURES

FLM-D5P is a special formulated water based fluid for bubble and cloud machine. Capable to generate pure and clean fog.

CONTACT: W 46-228, F1-228, Indira Nagar.



FLP-700 Fire Training Smoke Fluid

FLP-700 is water based FLP fog fluid filled in a pressurized container which can be installed in fog machines without fluid pump.

BLANKET

FLP fog fluid in a pressurized container

FOR ORDER

F1-52, F1-51, W6-52



FLP Fire Training Smoke Fluid

Antair FLP fog fluid is specifically made for fire training machines.

FEATURES

- The ingredients of this water-based fog liquid are refined from pure forest.
- It is 100% natural, completely non-toxic and safe.
- It can produce high density fog and is also for using at poor ventilation environments (such as fire drills or rescue training, etc.)

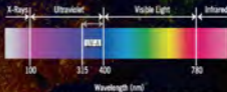
CONTACT: W 46-228, F1-228

DARKFX / UV EFFECTS

Intro

The prodigious DarkFX Series has adopted the latest LED technology with a peak wavelength of 365nm. Because 365nm is in the middle of UV-A wavelength the emitted light evenly covers the whole spectrum producing a traditional blacklight effect without the visible light associated with most LED based blacklights. All UV reactive material reflects perfectly with stunning bright and vivid colors.

Traditional blacklight fixtures emit long-wave ultraviolet (UV) light without much visible light. The UV spectrum ranges from 300 to 400 nanometers (nm), emitting light that is generally invisible to the human eye*, however the higher the "nm" rating the more visible light. Traditionally the entertainment industry has used the UV-A spectrum (375-400nm), which is not harmful to humans, widely adopted in light fixtures, counterfeit detection, medical use and industrial curing.



*Typical human eye will respond to wavelength from 390 to 700nm

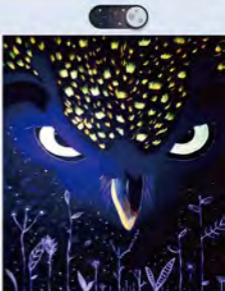


Photo by: J. P. H. / iStock

UV reactive material such as UV Paint, UV Wake-up, and fluorescent minerals produce the best "glow" effect without any ambient light. Most LED BlackLights in the market today have a peak wavelength between 390-410nm which is where the UV and visible light spectrums begin to overlap, in these cases the ambient light generated is very purple or bluish making the end result less than ideal when trying to create a true Blacklight environment.

Application Area

Theater, Amusement Parks, TV & Film,
Themed Architecture and Entertainment Venues

Dark FX UV Paint

UV paint is also known as black light paint. Articles with UV paint applied react to UV light source and glow.

Available colors: Bright Green, Bright Orange, Bright Red, Brilliant Yellow, Deep Blue, Deep Violet, Deep Yellow, Hot Pink, Magenta, and Invisible Blue.

Available capacities: 4 fluid ounce (117 ml) and 1 gallon (3.78 Liter)



DARKFX STRIP 1020



Features

- High efficiency IV LED
- Peak wavelength at 305nm
- Minimum visible light
- High output 9200lm at full intensity
- Special optics will not degrade by high UV exposure
- Flicker free

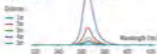
Specification

| | | | |
|-----------------------|-----------------------------|---------------------|---------------------------|
| - Input voltage | 3C 4V @ 2.5A | - Cable connection | 22.0MS wire cable |
| - Rated power | 210W | - Housing | Aluminum Extrusion |
| - LED | 22 x 1.9W High Power IV LED | - Protection rating | IP-20 indoor use only |
| - Optics | 40 degrees | - Dimension | 1.702.2 x 100.0 x 102.0mm |
| - Radiant Flux output | 9200 lm | - Dry weight | 17 kg |
| - Project lamp life | 20,000 hrs L70 at 25C | | |
| - Peak wavelength | 305nm | | |

Illuminance measurement

| Distance (m) | 1 | 2 | 3 | 4 | 5 |
|----------------------------------------------|-------------------------------------------------------------|-------------------------------------------------------------|------------------------------------------------------------|------------------------------------------------------------|------------------------------------------------------------|
| Intensity | 450 $\mu\text{W}/\text{cm}^2$ 4.50 W/m^2 | 150 $\mu\text{W}/\text{cm}^2$ 1.50 W/m^2 | 70 $\mu\text{W}/\text{cm}^2$ 0.70 W/m^2 | 42 $\mu\text{W}/\text{cm}^2$ 0.42 W/m^2 | 30 $\mu\text{W}/\text{cm}^2$ 0.30 W/m^2 |
| Intensity degradation rate (compare with 1m) | 0% | 66.7% | 82.2% | 90.7% | 93.3% |

Spectrum



DARKFX WASH 2000 IP



Features

- High efficiency 0W LED
- Peak wavelength at 365nm
- Special optics will not degrade to high UV exposure
- Maximum visible light
- High output 21400lm at full intensity
- Flicker free
- Weather proof IP-65
- Acoustic Power CDN TruFit connector

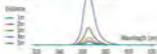
Specification

| | | | |
|---------------------|------------------------------|---------------------|--------------------------------|
| - Input voltage | AC100-240V 50-60Hz | - IMV channels | 1:1 |
| - Rated power | 70W | - Operation | Digital display with 4 buttons |
| - LED | 32 x 1W High Power UV LED | - Power connection | 3-Pin water proof connector |
| - Refresh rate | 500Hz | - Data connection | 3-Pin water proof connector |
| - Optics | 25 degrees | - Housing | Aluminum die-cast |
| - Output | 21400lm | - Protection rating | IP-65 |
| - Project lamp life | 20,000 hrs L70 at 25 degrees | - Dimension | 1.434 x 0.176 x 0.227mm |
| - Color range | 3x5nm | - Weight | 0.4kg |
| - Control option | DMX 512, Manual | | |

Illuminance measurement

| Distance [m] | 1 | 2 | 3 | 4 | 5 |
|-----------------------------------------------|-----------------------------------------------------------------------|-----------------------------------------------------------------------|---------------------------------------------------------------------|---------------------------------------------------------------------|---------------------------------------------------------------------|
| Intensity | 5442 ($\mu\text{W}/\text{cm}^2$) 54.42 (W/m^2) | 1372 ($\mu\text{W}/\text{cm}^2$) 13.72 (W/m^2) | 718 ($\mu\text{W}/\text{cm}^2$) 7.18 (W/m^2) | 429 ($\mu\text{W}/\text{cm}^2$) 4.29 (W/m^2) | 253 ($\mu\text{W}/\text{cm}^2$) 2.53 (W/m^2) |
| Intensity degradation rate (compared with 1m) | 25% | 11.25% | 5.625% | 12.5% | 95.6% |

Spectrum





DARKFX WASH 2000



Features

- High efficiency (V-LED)
- Peak wavelength at 365nm
- Infrared- visible light
- High output 20270mW at full intensity
- Special optics will not dry site by high UV exposure
- Flicker free
- Adjustable modular strips for maximum coverage

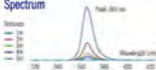
Specification

| | | | |
|-----------------------|----------------------------|-----------------------|------------------------------------|
| - Input voltage | AC100-240V50-60Hz | - Operation | 0 to 100% DUTY |
| - Rated power | 55W | - Power connection | 2 x 3-digit display with 4 buttons |
| - LED | 27 x 1798 High Power V-LED | - DMS data connection | 5-pin DLR |
| - Refresh rate | 500 Hz | - Housing | Metal |
| - Optics | 25 degrees | - Protection rating | IP-20 (cover use only) |
| - Radiant flux output | 20270 mW | - Dimension | 1.600 x 0.180 x 0.2 x 0.170 m |
| - Project lamp life | 30,000 hrs. L70 at 25°C | - Dry weight | 6.37kg |
| - Peak wavelength | 365nm | | |
| - Control option | DMS-10, Manual | | |
| - DMS channels | 1-2 | | |

Illuminance measurement

| Distance [m] | 1 | 2 | 3 | 4 | 5 |
|----------------------------------------------|-----------------------------------------------------------------------|-----------------------------------------------------------------------|---------------------------------------------------------------------|---------------------------------------------------------------------|---------------------------------------------------------------------|
| Intensity | 4794 ($\mu\text{W}/\text{cm}^2$) 41.84 (W/m^2) | 1173 ($\mu\text{W}/\text{cm}^2$) 10.21 (W/m^2) | 930 ($\mu\text{W}/\text{cm}^2$) 8.13 (W/m^2) | 648 ($\mu\text{W}/\text{cm}^2$) 5.64 (W/m^2) | 526 ($\mu\text{W}/\text{cm}^2$) 4.58 (W/m^2) |
| Intensity degradation rate (compare with 1m) | 0% | 66.7% | 62.8% | 87.7% | 90.9% |

Spectrum





DARKFX SPOT 670



Features

- High efficiency SMD
- Peak wavelength at 325nm
- Maximum visible light
- High output 670lmk at full intensity
- Special optics will not drag back by half of expense
- Flicker free
- 70 degree narrow beam angle

Specification

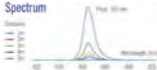
| | |
|-----------------------|--------------------------|
| - Input voltage | AC100-242V 50-60Hz |
| - Rated power | 20W |
| - LED | 9 x 1W High Power SMD |
| - Refresh rate | 500Hz |
| - Optics | 0 degree |
| - Radiant flux output | 3760 mW |
| - Project lamp life | >50,000 hrs @ 100% TSC |
| - Peak wavelength | 325nm |
| - Control option | DMX DMX512, Master |

| | |
|-----------------------|---------------------------------------|
| - DMX channels | 1-2 |
| - Operation | 2 1/2' in operation with 4 buttons |
| - Power connection | Neutrik Powerlock 4 Pin/5 Pin |
| - DMX data connection | 5 pin 3 pin |
| - Housing | Aluminum |
| - Protection rating | IP-20 (open back only) |
| - Dimension | 100mm x 100mm x 40mm |
| - Dry weight | 2.66kg |

Illuminance measurement

| Distance (m) | 1 | 2 | 3 | 4 | 5 |
|----------------------------------------------|-----------------------------------------------------------------|-----------------------------------------------------------------|-----------------------------------------------------------------|-----------------------------------------------------------------|-----------------------------------------------------------------|
| Intensity | 40% ($\mu\text{W/cm}^2$) ($\mu\text{F}^2/\text{W/cm}^2$) | 30% ($\mu\text{W/cm}^2$) ($\mu\text{F}^2/\text{W/cm}^2$) | 20% ($\mu\text{W/cm}^2$) ($\mu\text{F}^2/\text{W/cm}^2$) | 14% ($\mu\text{W/cm}^2$) ($\mu\text{F}^2/\text{W/cm}^2$) | 10% ($\mu\text{W/cm}^2$) ($\mu\text{F}^2/\text{W/cm}^2$) |
| Intensity degradation rate (compare with 1m) | 0% | 66.7% | 83.3% | 87.5% | 90% |

Spectrum



DARKFX STRIP 510



Features

- High efficiency (WLED)
- Peak wavelength at 200nm
- Minimum visible light
- High output 4000lm at full intensity
- Special optics will not degrade by high UV exposure
- Flicker free

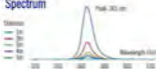
Specification

| | | | |
|-----------------------|----------------------------|---------------------|--------------------------|
| - Input voltage | DC 20-24V | - Cable connection | 25 AWG wire cable |
| - Rated power | 22W | - Housing | Aluminum Extrusion |
| - LED | 4 x 179W High Power UV LED | - Protection rating | IP-20 (cover use only) |
| - Optics | 25 degrees | - Dimension | L 1002 x W 30 x H 30.4mm |
| - Radiant flux output | 4000 mW | - Dry weight | 1.00 kg |
| - Project lamp life | 20,000 hrs L70 at 25C | | |
| - Peak wavelength | 265nm | | |

Illuminance measurement

| Distance [m] | 1 | 2 | 3 | 4 | 5 |
|----------------------------------------------|---------------------------------------------------------------------|---------------------------------------------------------------------|--------------------------------------------------------------------|--------------------------------------------------------------------|--------------------------------------------------------------------|
| Intensity | 700 ($\mu\text{W}/\text{cm}^2$) 7.80 (W/m^2) | 270 ($\mu\text{W}/\text{cm}^2$) 2.70 (W/m^2) | 99 ($\mu\text{W}/\text{cm}^2$) 0.99 (W/m^2) | 54 ($\mu\text{W}/\text{cm}^2$) 0.54 (W/m^2) | 38 ($\mu\text{W}/\text{cm}^2$) 0.38 (W/m^2) |
| Intensity degradation rate (compare with 1m) | 0% | 60.8% | 85.9% | 92.2% | 94.5% |

Spectrum



DARKFX STRIP 510 IP



Features

- High efficiency WLED
- Peak wavelength at 510nm
- Maximum visible light
- High output 4500lm at full intensity
- Optics optics with red diaphragm to high IR exposure
- Glass free

Features

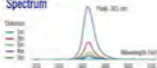
- Input voltage: DC 10-30V
- Rated power: 20W
- LED: 2 x 1.7W High-Power SMD
- Optics: 25 degrees
- Radiant flux output: 4500 lm
- Project lamp life: 20,000 hrs L70 at 25C
- Peak wavelength: 510nm

- Cable connection: 22 AWG wire cable
- Housing: Aluminum Extrusion
- Protection rating: IP-65
- Dimension: L:80.0 x W:14.2 x H:10.0 mm
- Dry weight: 1.06 kg

Illuminance measurement

| Distance (m) | 1 | 2 | 3 | 4 | 5 |
|----------------------------------------------|---------------------------------------------------------------|---------------------------------------------------------------|--------------------------------------------------------------|--------------------------------------------------------------|--------------------------------------------------------------|
| Intensity | 700 ($\mu\text{W}/\text{cm}^2$) 7.00 (W/m ²) | 211 ($\mu\text{W}/\text{cm}^2$) 2.11 (W/m ²) | 99 ($\mu\text{W}/\text{cm}^2$) 0.99 (W/m ²) | 54 ($\mu\text{W}/\text{cm}^2$) 0.54 (W/m ²) | 38 ($\mu\text{W}/\text{cm}^2$) 0.38 (W/m ²) |
| Intensity degradation rate (compare with 1m) | 0% | 69.8% | 85.9% | 92.2% | 94.5% |

Spectrum



DARKFX SPOT 510 IP



ETV
ETV SYSTEMS
ETV SYSTEMS
ETV SYSTEMS



Features

- High efficiency W-LED
- Peak wavelength at 365nm
- Maximum visible light
- High output 4500lm at full power
- Special optics will not degrade by high UV exposure
- Flicker free
- Weather proof IP-65

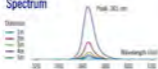
Specification

| | | | |
|-----------------------|---------------------------|---------------------|------------------------|
| - Input voltage | 100-240V | - Cable connection | Ø2 AWG wire cable |
| - Rated power | 12W | - Housing | Aluminum Die Casting |
| - LED | 5 x 1.7W High Power W-LED | - Protection rating | IP-65 |
| - Optics | 35 degrees | - Dimension | W100 x D66.8 x H100 mm |
| - Radiant flux output | 4500lm | - Dry weight | 0.71 kg |
| - Project lamp life | 20,000 hours L70 at 25°C | | |
| - Peak wavelength | 365nm | | |

Illuminance measurement

| Distance (m) | 1 | 2 | 3 | 4 | 5 |
|-----------------------------------------------|------------------------------------------------------------------------|----------------------------------------------------------------------|----------------------------------------------------------------------|----------------------------------------------------------------------|---------------------------------------------------------------------|
| Intensity | 29621 ($\mu\text{W}/\text{cm}^2$) 20.62 (W/m^2) | 5341 ($\mu\text{W}/\text{cm}^2$) 5.34 (W/m^2) | 2133 ($\mu\text{W}/\text{cm}^2$) 2.13 (W/m^2) | 1326 ($\mu\text{W}/\text{cm}^2$) 1.32 (W/m^2) | 761 ($\mu\text{W}/\text{cm}^2$) 0.76 (W/m^2) |
| Intensity degradation rate (compared with 1m) | 0% | 74.2% | 89.6% | 93.9% | 96.3% |

Spectrum



DARKFX SPOT 1750



Features

- High efficiency 19 LED
- Peak wavelength at 360nm
- Minimum visible light
- High output 1920mW at full intensity
- Special optics will not degrade by high UV exposure
- Flicker free
- 7.5 degrees narrow beam angle

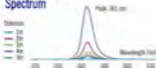
Specification

| | | | |
|-----------------------|---------------------------|-----------------------|--------------------------------------|
| • Input voltage | AC100-240V 50-60Hz | • DMX channels | 1.2 |
| • Rated power | 72W | • Operation | 2 x 7.5 digit display with 4 buttons |
| • LED | 4 x 19W High Power UV LED | • Power connection | Multi (Powercon in.) through |
| • Refresh rate | 100 Hz | • DMX data connection | 3-pin XLR |
| • Optics | 20 degrees | • Housing | Metal |
| • Radiant flux output | 19200 mW | • Protection rating | IP-20 (table use only) |
| • Project lamp life | 20,000 hrs L70 at 75C | • Dimension | 1,204 x 1,702 x 1,927 mm |
| • Peak wavelength | 360nm | • Dry weight | 3.2 kg |
| • Control option | DMX, DMX 512, Manual | | |

Illuminance measurement

| Distance (m) | 1 | 2 | 3 | 4 | 5 |
|-----------------------------------------------|-----------------------------------------------------------------------|----------------------------------------------------------------------|---------------------------------------------------------------------|----------------------------------------------------------------------|--------------------------------------------------------------------|
| Intensity | 6573 ($\mu\text{W}/\text{cm}^2$) 65.73 (W/m^2) | 1760 ($\mu\text{W}/\text{cm}^2$) 17.6 (W/m^2) | 769 ($\mu\text{W}/\text{cm}^2$) 7.69 (W/m^2) | 43.9 ($\mu\text{W}/\text{cm}^2$) 4.39 (W/m^2) | 38 ($\mu\text{W}/\text{cm}^2$) 0.38 (W/m^2) |
| Intensity degradation rate (compared with 1m) | 0% | 73.2% | 88.3% | 93.3% | 95.8% |

Spectrum





DARKFX DRIVE 4 MKII

Features

- Compact and robust design
- 4 output terminals for DarkFX 0/1 fixtures
- Neutral power-on/off filter
- 2 x 16 digit LCD display interface
- DMX control option
- 0/1M feature set



Specification

- Input voltage AC100-240V 50-60Hz
- Rated power 100W
- Refresh rate 100Hz
- Output current Constant 500mA Max. per channel
- Control option DMX 0/1 Manual
- DMX channels 1,2
- Operation 2 x 16 digit display with 4 buttons

- Fixture output 4 terminal block
- Power connection Neutral Power-on/off through
- DMX data connection 5-pin RJ45
- Housing Metal
- Protection rating IP-20 (indoor use only)
- Dimension 1.25 x 8.50 x 4.75 mm
- Dry weight 1.62 kg



DARKFX DRIVE 4

Features

- Compact and robust design
- 4 output terminals for DarkFX 0/1 fixtures
- Neutral power-on/off filter
- 2 x 16 digit LCD display interface
- DMX control option



Specification

- Input voltage AC100-240V 50-60Hz
- Rated power 75W
- Refresh rate 100Hz
- Output current Constant 500mA Max. per channel
- Control option DMX 0/1 Manual
- DMX channels 1,2
- Operation 2 x 16 digit display with 4 buttons
- Fixture output 4 terminal block

- Power connection Neutral Power-on/off through
- DMX data connection 5-pin RJ45
- Housing Metal
- Protection rating IP-20 (indoor use only)
- Dimension 1.25 x 8.50 x 4.75 mm
- Dry weight 1.62 kg



"Although a watch is a statement of character and fashion, its primary purpose is to measure and communicate our most important resource. That resource is time.

Time is the one thing in which we are all equal. We cannot make more of it no matter how much we try. No amount of money or effort will influence its passing. In the time we have available, every moment must be seized, every opportunity taken.

In a day ... an idea is borne of inspiration

In a week ... ideas develop into projects

In a month ... a prototype is realized, ready for testing

In a year ... a product enters the market, the end result of time invested and passion committed

A lifetime ... a record of achievements, of developed ideas, of effort and enthusiasm, from beginnings through growth to maturity from obscurity to recognition.

"This is our commitment to you. Our time is devoted to our partners, supporters and clients - to reach our shared aspirations."



| | MODEL | RATED POWER | WIND UP TIME (approx) | OUTPUT (kWh/ev) | DUE DAWN CAPACITY (kWh) | MACHINE BRACKET | REMOTE CONTROL |
|------|-------------|--------------------|----------------------------------|-----------------|-------------------------|-----------------|----------------|
| | AF-3(AF-3K) | 37W | NA | NA | NA | YES | • 2-3 |
| | AF-4(AF-4K) | 100W | NA | NA | NA | YES | • 2-3 |
| | AF-5(AF-5K) | 300W | NA | NA | NA | • AF-5-HB | NA |
| | B-10 | 100/100W 24V/100W | NA | NA | 07 | YES | NA |
| NEW! | B-200 | 200W | NA | NA | 2 | YES | NA |
| | DA-1 | 100/400W 24V/100W | 8 minutes | NA | 2.3 | NA | NA |
| | DA-100 | 100/700W 24V/400W | NA | NA | NA | NA | NA |
| | DA-200 | 100/300W 24V/100W | 10W/24 minutes 20W/12 minutes | Start/stop | 0 | NA | NA |
| | DA-250 | 300W | 4 minutes | 20W/min | 0 | NA | NA |
| | E-1 | 80W | 4.5 minutes | NA | 2.1 | NA | NA |
| NEW! | F-2 | 100/1000W 24V/100W | 15 minutes | NA | 5 | NA | NA |
| | F-4 | 100W | 1 minute | NA | 0 | NA | NA |
| | F-7 | 300W | 8 minutes | NA | 5x2 pin | NA | NA |
| | FT-200 | 400W | 1 sec | NA | 3.1 | NA | • 2-3 |
| | FT-50FT-50 | 100W | 75 minutes | NA | NA | NA | FT-50-SC-1 |
| | FT-100 | 100/100W 24V 100W | 0.5 minutes | NA | 6 | NA | • 2-3 |
| | FT-200 | 300W | 75 minutes | 8 meters height | 2.1 | NA | • 2-3 |
| | HC-100 | 200W | NA | NA | 2.3 | NA | NA |
| | HC-200 | 200W | NA | NA | 2.3 | NA | NA |
| | HC-400 | 400W | NA | NA | 2.3 | NA | NA |
| | HC-500 | 100/400W 24V/100W | NA | NA | 2.5 | NA | NA |
| | HC-1000 | 100W | NA | NA | 4.1 | NA | NA |
| | HC-101 | 100W | 4.5 minutes | 4.2m/min | 2.5 | NA | NA |
| | H-1000 | 100W | 75 minutes | NA | NA | NA | P-10 |
| | H-1000 | 100W | 9 minutes | NA | NA | YES | NA |
| | LD-10 | 40W | NA | NA | NA | NA | NA |
| | LD-20 | 50W | NA | NA | NA | NA | NA |
| | M-4 | 100W | 5 minutes | 1 meters height | 2.1 | NA | NA |
| | M-5 | 100W | 8 minutes | NA | 0 | • M-5-HB | M-20 |
| | M-10(M-10K) | 100W | 7 minutes | 1 meters height | 2.1 | NA | NA |
| | M-10 | 100W | 95 minutes | NA | 0 | • M-5-HB | M-21 |
| | M-1 | 100W | 3 minutes | 1 meters height | 1 | NA | NA |
| | M-10 | 300W | 95 minutes | NA | 0 | NA | M-20 |
| | M-1 | 100W | 12 minutes | NA | 0 | NA | NA |
| | MB-1 | 70W | 1 sec | NA | 10m | NA | NA |
| | MS-200 | 400W | 1 sec | NA | 3.1 | NA | • 2-3 |
| | MS-50 | 100W | 75 minutes | NA | NA | NA | MC-1 |
| | S-100 | 80W | NA | NA | 5 | YES | NA |
| | S-100K | 80W | NA | NA | 5 | YES | SC-2 |
| | S-200 | 80W | NA | NA | 5 | YES | SC-2 |
| | SM-250 | 100/100W 24V/100W | NA | NA | 5 | YES | • SC-2 |
| | SM-300 | 80W | NA | NA | 5 | YES | • SC-3 |
| | S-500 | 100/100W 24V/100W | NA | NA | 20 | NA | • SC-3 |
| NEW! | S-600 | 100W | NA | NA | 5 | YES | • SC-4 |
| NEW! | SCN-600 | 7W | NA | NA | 100m | NA | NA |
| | W-101 | 10W | NA | NA | 07 | YES | NA |
| | W-100 | 100W | 2 minutes | NA | 0.8 | NA | NA |
| | W-100 | 100/1000W 24V/100W | 0.5 minutes | NA | 3.3 | • W-100-HB | NA |
| | W-100 | 100W | 10 minutes | NA | 6 | • W-100-HB | NA |
| | W-1000 | 250W | 2 minutes | NA | 6 | • W-100-HB | NA |
| | W-75 | 100W | 75 minutes | 8 meters height | 2.1 | NA | NA |
| | W-1000 | 100W | 2 minutes | NA | 0.3 | NA | 2-10 |
| | Z-1000 | 100/1000W 24V/100W | 4 minutes | NA | 17 | YES | 2-10 |
| | Z-1001 | 100W | 0 minutes | 1 meters height | 2.1 | NA | 2-10 |
| | Z-1000 | 100/1000W 24V/100W | 10 minutes | NA | 2.5 | YES | NA |
| | Z-1000 | 100W | 2 minutes | NA | 6 | NA | 2-10 |
| | Z-1000 | 700W | 0 minutes | NA | 6 | NA | 2-20 |
| | Z-100 | 100/100W 24V/100W | 4.5 minutes | NA | 1.5 | NA | • 2-3 |
| | Z-100 | 100/1000W 24V/100W | 15 minutes | NA | 4 | YES | • 2-3 |
| | Z-100 | 100W | 5 minutes | 1 meters height | 2.1 | NA | NA |

| MODEL | IR ON-BOARD | IR ON-BOARD | TIMER REMOTE | WIRELESS REMOTE | 25 FT. REMOTE EXTENSION | COMPATIBLE WITH INC-100 | INC-100 ADAPTOR | INCORP. LINKABLE |
|--------------|-------------|---------------|--------------|-----------------|-------------------------|-------------------------|-----------------|------------------|
| AF-3/AF-3X | YES | NA | NA | • WR-10 | EXT-1 | NA | NA | YES |
| AF-4/AF-4X | YES | NA | NA | • AF-40 WR-20 | EXT-1 | NA | NA | YES |
| AF-5X/AF-50X | YES | NA | NA | • AF-50 WR-10 | NA | NA | NA | YES |
| 9-100 | NA | NA | NA | NA | NA | NA | NA | NA |
| 9-200 | YES | NA | • DC-1 | • DR-1 | EXT-1 | NA | NA | YES |
| NEW! 24-1 | YES | • IR ON-BOARD | NA | NA | NA | NA | NA | YES |
| 240-100 | NA | NA | NA | NA | NA | - | - | NA |
| 240-200 | YES | NA | NA | NA | EXT-2 | - | - | NA |
| 240-250 | YES | NA | NA | NA | NA | - | - | YES |
| 7-1 | YES | • IR ON-BOARD | NA | • WR-10 | NA | NA | NA | YES |
| | | • WR-40 | NA | • WR-40 | NA | NA | NA | YES |
| NEW! F-2 | YES | NA | NA | NA | NA | NA | NA | YES |
| F-4 | YES | • IR ON-BOARD | NA | NA | NA | NA | NA | YES |
| F-7 | YES | YES | NA | NA | NA | NA | NA | YES |
| FT-200 | YES | NA | NA | • WR-20 | EXT-1 | NA | NA | YES |
| FT-500T-50 | NA | NA | NA | • FT-50 PCB-1 | NA | NA | NA | NA |
| FT-100 | YES | NA | NA | W-2 | EXT-1 | YES | FTA-1 | YES |
| FT-200 | YES | NA | NA | W-2 | EXT-1 | NA | NA | YES |
| HC-100 | NA | NA | • HC-1 | • NR-1 | EXT-1 | NA | NA | NA |
| HC-200 | YES | NA | • HC-1 | W-1 | EXT-1 | NA | NA | YES |
| HC-400 | YES | NA | HC-1 | • NR-1 | EXT-1 | NA | NA | YES |
| HC-500 | YES | NA | NA | NA | NA | NA | NA | YES |
| HC-1000 | YES | • IR ON-BOARD | NA | NA | NA | NA | NA | YES |
| IC-101 | YES | NA | 1-8 | NA | EXT-4 | NA | NA | YES |
| IP-1000 | NA | NA | NA | NA | NA | YES | FTA-1 | NA |
| IP-100 | YES | NA | NA | W-1 | NA | YES | FTA-1 | YES |
| LS-10 | YES | NA | NA | NA | NA | NA | NA | YES |
| LS-20 | NA | NA | NA | NA | NA | NA | NA | NA |
| M-4 | YES | • IR ON-BOARD | NA | • WR-20 | NA | NA | NA | YES |
| | | • WR-100 | NA | • WR-100 | NA | NA | NA | YES |
| M-5 | YES | NA | W-20 | • M-3PRO | EXT-3 | YES | FTA-1 | YES |
| M-10000 | YES | • WR-40 | NA | W-2 | NA | NA | NA | YES |
| M-8 | YES | NA | W-20 | • M-20 | EXT-3 | YES | FTA-1 | YES |
| M-9 | YES | • WR-40 | NA | W-2 | NA | NA | NA | YES |
| M-9 | YES | NA | W-20 | • M-3PRO | EXT-3 | YES | FTA-1 | YES |
| M-10 | YES | • IR ON-BOARD | NA | • WR-20 | NA | NA | NA | YES |
| | | • WR-20 | NA | • WR-20 | NA | NA | NA | YES |
| M-1 | NA | NA | • HC-2 | • MC-3 | NA | NA | NA | NA |
| M-20X | YES | NA | NA | • WR-20 | EXT-1 | NA | NA | YES |
| M-55 | NA | NA | NA | • PCB-1 | NA | NA | NA | NA |
| M-95 | NA | NA | NA | NA | NA | NA | NA | NA |
| M-100 | YES | NA | NA | NA | EXT-4 | NA | NA | YES |
| M-1000 | YES | NA | NA | NA | EXT-4 | NA | NA | YES |
| M-1000 | YES | NA | NA | NA | EXT-4 | NA | NA | YES |
| M-1000 | YES | • IR ON-BOARD | NA | • WR-20 | EXT-4 | NA | NA | YES |
| | | • WR-20 | NA | • WR-20 | EXT-4 | NA | NA | YES |
| NEW! M-1000 | YES | • WR-40 | NA | W-2 | NA | NA | NA | YES |
| NEW! 30N-600 | YES | NA | NA | NA | NA | NA | NA | NA |
| M-105 | NA | NA | NA | W-1 | YES | NA | NA | NA |
| M-100 | YES | NA | NA | W-1 | NA | YES | FTA-1 | YES |
| M-1000 | YES | YES | NA | W-1 | NA | YES | FTA-1 | YES |
| M-1000 | YES | W-1 | NA | W-1 | NA | YES | FTA-1 | YES |
| M-70 | YES | NA | NA | W-1 | NA | NA | NA | YES |
| 2-6000 | NA | NA | • 1-40 | • 1-50 | EXT-1 | NA | NA | NA |
| 2-10000 | YES | NA | • 1-40 | • 1-50 | EXT-1 | YES | FTA-2A | YES |
| 2-1000 | YES | NA | • 1-40 | • 1-50 | EXT-1 | NA | NA | NA |
| 2-2000 | YES | NA | 1-8 | • 1-9 | EXT-4 | YES | FTA-2A | YES |
| 2-3000 | YES | NA | 1-20 | • 1-30PRO | EXT-2 | YES | FTA-2 | YES |
| 2-3000 | YES | NA | 1-20 | • 1-30PRO | EXT-3 | YES | FTA-2 | YES |
| 2-300 | YES | NA | NA | NA | EXT-1 | NA | NA | YES |
| 2-300 | YES | NA | NA | • WR-20 | EXT-1 | NA | NA | YES |
| 3-1000 | YES | NA | NA | W-2 | NA | NA | NA | YES |

Antari
HOB MACHINE

Products are manufactured by Antari Lighting & Effects Ltd. : www.antari.com
For information requests please contact us at : sales@antari.com 006220220

