

WELCOME
to a new world of
sensations



▣ Pedigree

CELTO Acoustique is a newcomer but the team has more than 20 years of experience in the professional audio industry. Under the lead of renowned French engineer Arthur Felix, CELTO Acoustique takes his background in solid R&D and deep savoir faire. Each system is developed with a real passion for music and a true respect for the professionals that will count on us for their living.



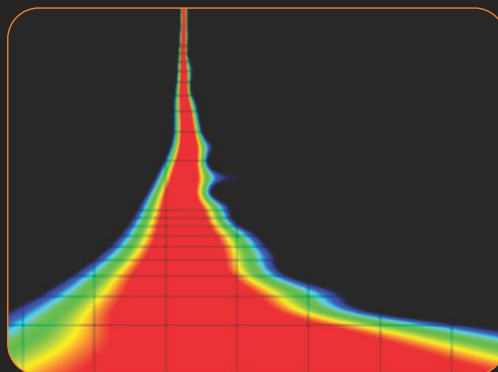
> Craftsmanship

All our speakers are hand-made by highly qualified workers, mixing traditional and modern machinery techniques, in order to achieve perfection. The precision in assembly and the attention to detail are second to none. Only noble materials that pass our strict quality standard are used in our products.



📊 Performance

Reproducing a clean audio signal at concert sound pressure level is not an easy task. That's why all our systems go through an extensive array of measurements in the laboratory, long listening sessions with audio experts, and multi month test in the field before going to the manufacturing stage. The result is real life performance you can rely on.



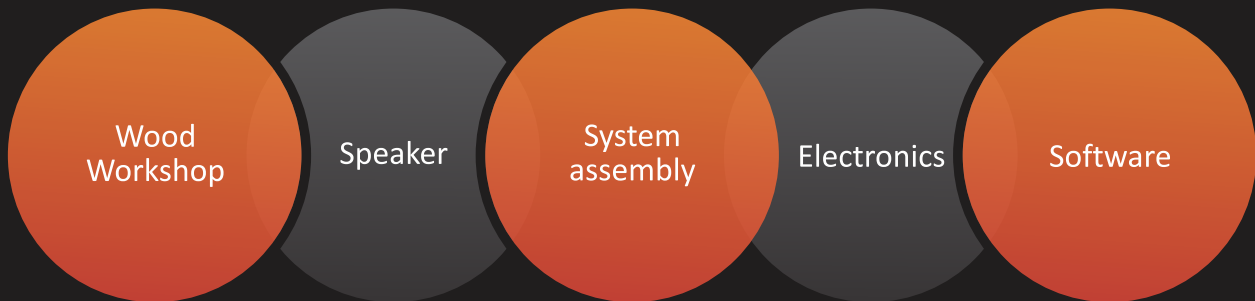
◇ Identity

CELTO Acoustique refuses to be another me too company. Our technical solutions are innovative and we manufacture in house all our drivers to obtain an unique sound quality. Moreover, our signature Industrial Edge Design combined with our distinctive Titanium finish are unique and make us stand out from the crowd.



ABOUT CELTO

CELTO Acoustique is a fully Integrated manufacturer for real plug and play systems. All processes are done in-house, from driver design and manufacturing to CELTO DSP Master (software that pilots all our electronics). This ensures complete quality control and cost advantage which makes all our products stand out from the rest with an exceptional price performance ratio.



FULLY INTEGRATED



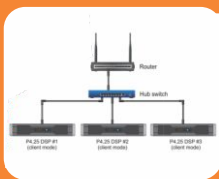
SPEAKER



CABINET



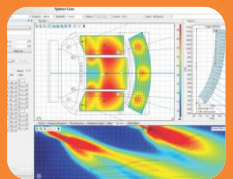
AMPLIFIER



NETWORK



DSP MASTER



PREDICTION SOFTWARE

END TO END SOLUTION THAT SIMPLIFIES YOUR WORK

iFIX SERIES

Ultra Compact Installation Loudspeaker



◆ About iFIX Series

Ultra compact series for installation. Satellite Speakers & Subwoofers, optimized for smooth reproduction in and out of axis. Genuine European dia-cast CELTO drivers, optimized Right-Phase crossover with tongue and groove assembly, multiple M8 flypoints. "Bubble" textured coating, tropicalized products (waterproof cones, stainless steel hardware).



Deutsche Bank, Braschaat, Belgium

TECHNICAL SPECIFICATION

	iFIX 8	iFIX 13s
Type	8" + 1" coaxial	13" Subwoofer
Power handling	150W RMS AES / 300W Program / 600W peak	600W RMS AES / 1200W Program / 2400W peak
Impedance	12 Ohm	6 Ohm
Freq response	100-22000Hz	38-16000Hz
Directivity	70° x 70° (conical) above 1500Hz	Omni in useable band
Sensitivity 1W/1m	93dB/W/m (wideband 200~16000Hz)	99dB/W/m
Max SPL/1m	115dB Continuous, 118dB Program, 121dB Peak	127dB Continuous, 130dB Program, 133dB Peak
Hardware	4 M8 points	Yes, 6 M8 points
Cabinet	CNC made with tongue and groove assembly, 15mm birch plywood	CNC made with tongue and groove assembly, 18mm birch plywood
Dimension	243x250x250 mm	530x415x530 mm
Net weight	5kg net, 6kg gross	22kg net, 25kg gross

CT SERIES

When Sound Quality Matters



◆ About CT Series

Full range Loudspeakers optimized for smooth reproduction in and out of axis, useable without DSP or any EQ. Genuine European dia cast OEM drivers, oversized Right-Phase crossover, rotatable horn. Symmetrical pan cuts for floor monitor usage, birch plywood cabinet with tongue and groove assembly, multiple M8 fly-points, touring grade black coating.



CT15X at Jodhpur Riff festival, Rajasthan, India

TECHNICAL SPECIFICATION

	CT8	CT10	CT12	CT15	CT15X	CT118S	CT218S
Type	8" + 1" Speaker	10" + 1" Speaker	12" + 1" Speaker	15" + 1" Speaker	15" + 1.5" Speaker	18" Subwoofer	2 x 18" Subwoofer
Power handling	200W RMS AES, 400W Program, 800W peak	300W RMS AES, 600W Program, 1200W peak	400W RMS AES, 800W Program, 1600W peak	600W RMS AES, 1200W Program, 2400W peak	800W RMS AES, 1600W Program, 3200W peak	1000W RMS AES, 2000W Program, 4000W Peak	2000W RMS AES, 4000W Program, 8000W Peak
Impedance	8 ohms	8 ohms	8 ohms	8 ohms	8 ohms	8 ohms	4 ohms
Frequency response	50Hz – 19kHz	46Hz – 19kHz	45Hz – 19kHz	55-18000Hz	44Hz – 20kHz	34Hz – 1500Hz	29Hz – 150Hz
Directivity	80° x 50°	80° x 50°	80° x 50°	80° x 50°	80° x 50°	Omni in useable band	Omni in useable band
Sensitivity 1W/1m	95dB/W/m	97dB/W/m	98dB/W/m	98dB/W/m	98dB/W/m	97 dB/W/m	100 dB/W/m
Max SPL /1m	118dB Continuous, 121dB Program, 124dB Peak	122dB Continuous, 125dB Program, 128dB Peak	124dB continuous, 127dB Program, 130dB Peak	125dB continuous, 128dB Program, 131dB Peak	127dB continuous, 130dB Program, 133dB Peak	127dB Continuous, 130dB Program, 133dB Peak	133dB Continuous, 136dB Program, 139dB Peak
Hardware	5 M8 Points	11 M8 Point	11 M8 Point	7 M8 Point	7 M8 Point with internal metal brackets	Ground stack	Ground stack
Cabinet	CNC made with tongue & groove assembly 15mm birch plywood	CNC made with tongue & groove assembly 15mm birch plywood	CNC made with tongue & groove assembly 15 and 18mm birch plywood	CNC made with tongue & groove assembly 18mm birch plywood	CNC made with tongue & groove assembly 18mm birch plywood	CNC made with tongue & groove assembly 18mm birch plywood	CNC made with tongue & groove assembly 18mm birch plywood
Dimension	270 x 495 x 270 mm	330 x 540 x 320 mm	356 x 620 x 345mm mm	445 x 636 x 425 mm	445 x 636 x 425 mm	570 x 635 x 650 mm	580 x 1050 x 650 mm
Net Weight	14.0kg net / 16.0kg gross	18.0kg net / 21.0kg gross	21.0kg net / 26.0kg gross	26kg net, 29kg gross	34.5kg net / 41.0kg gross	43.0kg net / 50.5kg gross	69.5kg net / 79.5kg gross

VT SERIES

Near and Mid Field High-SPL Loudspeaker



◆ Ultimate SPL

VT series is designed to reach the highest SPL with the minimum distortion, best linearity and lowest power compression. As a true leading class product, VT15 accepts peaks of 4000W for an unprecedented level of performance in this category. Dynamic, Powerful and Exquisite, VT series bring the listening experience to the next level.

◆ Versatile

VT series offers convenient flexibility for any usage. On a stick, with the dual-mounting pot, sound can be projected towards the audience. With the pan-cut, it becomes a powerful floor monitor. With the QuickFly bracket, it can be mounted in seconds on a truss. And finally, the large number of M8 flying points makes it also suitable for fixed installations.

TECHNICAL SPECIFICATION				
	VT12	VT15	VT152	VT153
Type	12" + 1.4" Speaker	15" + 1.4" Speaker	2x15" + 1.4" Speaker	15" + 6.5" + 1.4" Speaker
Power handling	500W RMS AES, 1000W Program, 2000W peak	900W RMS AES, 1800W Program, 3600W peak	1600W RMS AES, 3200W Program, 6400W peak	LF: 900W RMS AES, 1800W Program, 3600W peak + MHF: 300W RMS AES, 600W Program, 1200W peak
Impedance	8 ohms	8 ohms	4 ohms	8 Ohm LF + 8 Ohm MHF
Freq response	55-18000Hz	45-18000Hz	45-18000Hz	45-19000Hz with recommended preset
Directivity	80° x 50° above 1000Hz	80° x 50° above 1000Hz	60° x 40° above 1000Hz	70° x 40° above 600Hz
Sensitivity 1W/1m	98dB/W/m (wideband 200~16000Hz)	99dB/W/m (wideband 200~16000Hz)	100dB/W/m (wideband 200~16000Hz)	99dB/W/m LF+ 108dB/W/m MHF
Max SPL/1m	125dB Continuous, 128dB Program, 131dB Peak	129dB Continuous, 132dB Program, 135dB Peak	132dB Continuous, 135dB Program, 138dB Peak	132dB Continuous, 135dB Program, 138dB Peak
Hardware	11 M8 points	14 M8 points	10 M8 points	13 M8 points
Cabinet	CNC made with tongue and groove assembly, 15mm/18mm Finnish WISA birch plywood	CNC made with tongue and groove assembly, 15mm/18mm Finnish WISA birch plywood	CNC made with tongue and groove assembly, 18mm birch plywood	CNC made with tongue and groove assembly, 18mm/25 birch plywood
Dimension	356x620x370 mm	445x735x425 mm	465x1170x478 mm	445x800x442mm
Net weight	21.0kg net / 26.0kg gross	29kg net / 35kg gross	52kg net / 57kg gross	35kg net, 40kg gross

VCM SERIES

Compact Coaxial Stage Monitor



◆ About VCM Series

Compact and low profile coaxial monitor. FOH, Monitor, Side fill, Surround, they do all. Incredible voice presence through the mix. Neodymium Coaxial for conical directivity. Extremely high efficiency.

VCM12 MADE FOR TOURING

TECHNICAL SPECIFICATION

	VCM10	VCM12
Type	10" + 1" Coaxial Monitor	12" + 1.4" Coaxial Monitor
Power handling	300W RMS AES, 600W Program, 1200W peak	400W RMS AES, 800W Program, 1600W peak
Impedance	8 ohms	8 ohms
Freq response	75-20000Hz	69-18000Hz
Directivity	70° Conical above 800Hz	70° Conical above 800Hz
Sensitivity 1W/1m	98dB/W/m (wideband 200~16000Hz)	100dB/W/m (wideband 200~16000Hz)
Max SPL/1m	124dB Continuous, 127dB Program, 130dB Peak	126dB Continuous, 129dB Program, 132dB Peak
Hardware	16 M8 Point	16 M8 Point
Cabinet	CNC made with tongue and groove assembly, 15mm/18mm Finnish WISA birch plywood	CNC made with tongue and groove assembly, 15mm/18mm Finnish WISA birch plywood
Dimension		504x425x330mm
Net weight		16kg net, 20kg gross

HEXIUM SERIES

Sound Quality Meets Aesthetics



◆ Luxury Design

France is famous for the luxury industry and CELTO Acoustique HEXIUM series is the testament of this history. We have trained a team of veterans to produce these exclusive and prestigious models in a dedicated part of our factory. Only the most noble material are used like premium Finnish birch plywood and CNC made space grade aluminum parts with Titanium finish. Finally, the 15 layers glossy piano coating gives HEXIUM speakers this stunning visual aspect that will be the pride of owner.

◆ First class Performance

Looking for the exceptional, we gave HEXIUM series the performance to match their impressive outlook. Flagship last generation neodymium drivers and audiophile grade passive crossover network provide a sound quality that very few systems in the world can compete with.



TECHNICAL SPECIFICATION

	HX12	HX118S
Type	12" + 1.5" Coaxial	18" Subwoofer
Power handling	400W RMS AES, 800W Program, 1600W peak	1200W RMS AES, 2400W Program, 4800W peak
Impedance	8 ohms	8 ohms
Freq response	65-20,000Hz	30-1200Hz
Directivity	70° Conical	Omni in useable range
Sensitivity 1W/1m	101dB	100dB
Max SPL/1m	133dB	137dB
Hardware	4 M8 Flying Point	No
Cabinet	Premium Finish WISA birch plywood glossy piano paint coating (any RAL color available)	Premium Finish WISA birch plywood glossy piano paint coating (any RAL color available)
Dimension	400x400x430 mm	580x730x700 mm
Net weight	17kg net	55kg net

SUBIUM SERIES

High Definition Subwoofers



◆ For Music Lovers

Low frequencies are the foundation of music reproduction. These long waves sublate the listening experience...or ruin it! At CELTO Acoustique, we took the utmost care in SUBIUM Series development to be sure that they offer pristine sound on any kind of music. To achieve this result, we designed a new range of drivers incorporating the latest technology like demodulating rings, FEA optimized motor systems, EIC grades In/Out voice coils, 3D cooling system and high grade neodymium magnets.

TECHNICAL SPECIFICATION				
	SU113	SU118	SU218	SU121
Type	13.5" Subwoofer	18" Subwoofer	2x18" Subwoofer	21" Subwoofer
Power handling	500W RMS AES, 1000W Program, 2000W peak	1200W RMS AES, 2400W Program, 4800W peak	2400W RMS AES, 4800W Program, 9600W peak	1600W RMS AES, 3200W Program, 6400W peak
Impedance	6 ohms	8 ohms	4 ohms	4 ohms
Freq response	45-20,000Hz	30-1200Hz	30-1200Hz	33-800Hz
Directivity	No	No	No	No
Sensitivity 1W/1m	97dB	100dB	103dB	103dB
Max SPL/1m	130dB	137dB	143dB	141dB
Hardware	M20 Mounting Pot	M20 Mounting Pot	M20 Mounting Pot	No
Cabinet	Heavily braced Premium Finish WISA birch plywood	Heavily braced Premium Finish WISA birch plywood	Heavily braced Premium Finish WISA birch plywood	CNC made with tongue and groove assembly, all made with 25mm birch plywood
Dimension	580x420x550 mm	700x545x475 mm	580x1080x740 mm	580x850x750 mm
Net weight	25kg net	45kg net	86kg	69kg

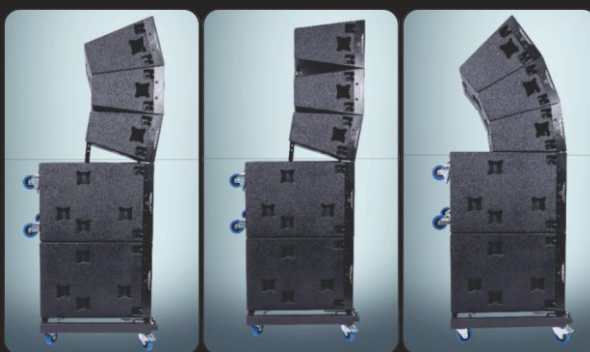
IWAC SERIES

Line Array Loudspeakers



◆ Dynamic reproduction

IWAC system has tremendous dynamic ability, offering an excellent SPL to size ratio. The newly developed 18" neodymium driver offers an accurate reproduction of macro dynamic signals. In fact, very few subwoofers can blend punch, depth and physical bass like IWAC118S. To match this beast of a sub, the 10" neodymium driver associates efficiency and clarity. In combination with the acclaimed CELTO Acoustique HFDN72 high frequency transducer, IWAC210 possesses the guts to handle large events with ease.



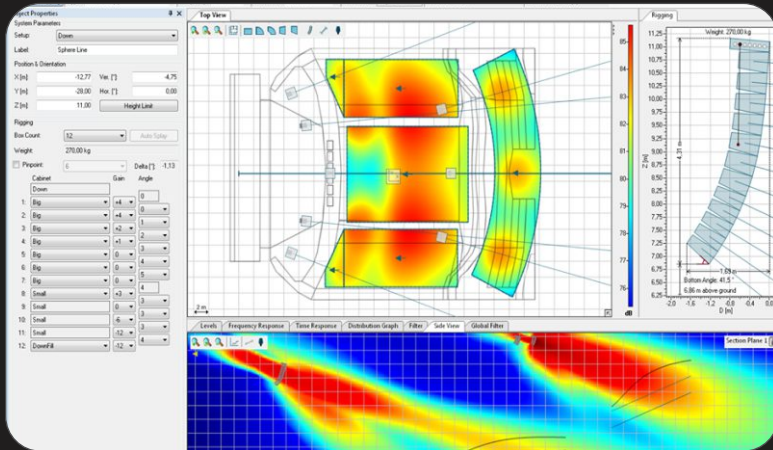
◆ Unmatched Versatility

Countless hours have been spent on IWAC rigging system to offer never seen flexibility. Without any additional hardware, IWAC 210 can attach to IWAC118S in over the air or ground stack setup. In ground stack setup, IWAC210 can be aimed up or down for near to mid field usage. Moreover, the rigging being fully integrated, the risk to loose hardware, like cables or push-pins, is past history.

TECHNICAL SPECIFICATION

	IWAC210	IWAC118
Type	2x10"+1.5" Speaker	18" Subwoofer
Power handling	LF 700W RMS AES, 1400W Program, 2800W peak, HF 110W RMS AES, 220W Program, 440W peak	1200W RMS AES, 2400W Program, 4800W peak
Impedance	LF - 8 ohm, HF 16 ohm	4 ohm
Freq response(-6dB)	68-16,000Hz	32-2000Hz
Directivity	H 110° x V15° per cabinet (total vertical directivity depends on the array)	Omni or Cardio
Sensitivity 1W/1m	LF 101dB, HF 110 dB	100dB
Max SPL/1m	137dB	137dB
Hardware	Fully integrated rigging (without any cables)	Fully integrated rigging (without any cables)
Cabinet	Premium Finish WISA birch plywood	Premium Finish WISA birch plywood
Dimension	710x310x470 mm	700x518x750 mm
Net weight	27kg	48kg

PILOT PREDICTION SW



◆ Prediction Software

With CELTO Acoustique PILOT Prediction software, IWAC system can be configured to match venue environment in a breeze. Automatic angles are given for any setup, depending on the coverage area. Even better, the bass array module can predict subwoofer cardioid configuration down to 20Hz.

P4.25 DSP

Networkable Digital Amplifier

4x2200W RMS@ 4 ohms, Dual Switch Mode Power Supply 4th Generation class D amplifier, 64-bit DSP processing with Dynamic EQ, Ethernet Network Control Proprietary Software (Celto DSP Master) with intuitive UI Presets for all CELTO speakers.



TECHNICAL SPECIFICATION

Power supply	Dual half resonant SMPS with active PFC (EE65 cores, total output of 8kW continuous) + independent auxiliary PSU for preamp DSP
Output stage	4th generation Class D with differential post filter feedback 300kHz PWM carrier
RMS Output Power	4 x 2500W RMS AES / 2 ohms, 4 x 2200W RMS AES / 4 ohms 1% THD, EIA standard
RMS Output Power	4 x 2000W RMS AES / 2 ohms, 4 x 2000W RMS AES / 4 ohms 0.5% THD, long term sinewave EIC standard
Maximum output voltage swing	140V
Frequency response	Amplifier section only: 5~30,000Hz (-1dB) With DSP: 10~20,000Hz (-1dB)
Typical THD (half power, 1kHz, 8 ohms)	<0.01%
Signal to noise ratio	Amplifier section only: 108dB(A) With DSP: 105dB(A)
Size (WxHxD)	483x88x520mm
Weight	13kg net, 15kg gross



CELTO DSP MASTER
DSP Master the in-house software that pilots all our electronics.

DISTRIBUTED AND MARKETED BY



CELTO
ACOUSTIQUE