

CORNERED AUDIO C6TRM



FEATURES

- 6 1/2" woofer with neo magnet
- 1" horn loaded dome tweeter
- Aluminium cabinet
- Designed for high SPL applications

COLOURS



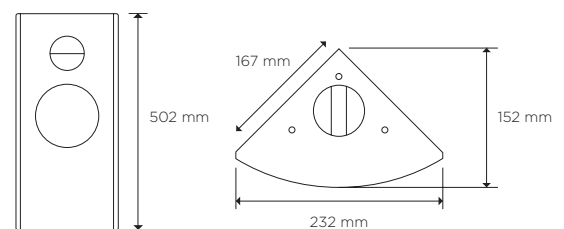
Description

C6TRM is the real McCoy in professional sound reinforcement. Designed to mount flush in corners or on walls without brackets, C6TRM is made for medium to high SPL applications in entertainment venues where the speaker needs to handle high average long term power.

Drive units in the C6TRM have been designed by the finest European manufacturers. The 6 1/2" woofer features a strong neodymium magnet with state-of-the-art-cooling and less than 1,8 dB power compression after 8 hours of maximum SPL. The 1" horn-loaded dome tweeter offers excellent sensitivity and combines the output of a horn-loaded design with the clarity of a dome tweeter.

The extruded aluminium cabinet is well damped and the triangular shape minimises standing waves inside the cabinet. With a very high output-to-size ratio, the C6TRM offers quality sound reproduction for applications where top performance is a must. It can be used in full range applications, but functions best when supported by a sub.

DATA



Power handling, IEC268:	250 watt
Power handling, peak:	1000 watt
Sensitivity, 2.83V/1m:	92 dB
Maximum SPL, long term:	116 dB
Maximum SPL, peak:	122 dB
Frequency response:	70-20.000 Hz
Nominal impedance:	8 ohm
Dispersion:	90x90 degree
Weight:	5,9 kg
Measurement:	(HxWxD) 502x232x167mm

CORNERED AUDIO C6TRM

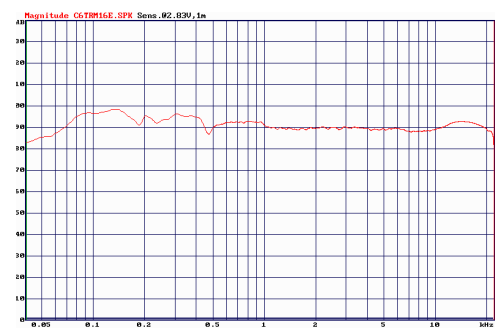
Architectural Specifications

The loudspeaker system shall consist of a 6 ½" woofer with neo magnet system and a 1" horn loaded tweeter with the voice coil dampened with magnetic oil for improved power handling. The frequency dividing network shall utilize polypropylene capacitors to reduce hysteresis and air coils to reduce compression.

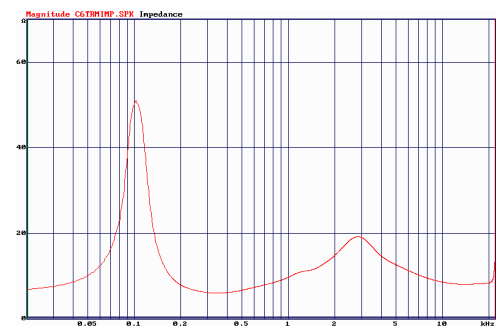
Performance specifications of a typical production shall be as follows: SPL at 1 m with 2.83 V input shall be at least 92 dB. Nominal impedance shall be 8 ohms, with minimum impedance being 5,2 ohm @ 350 Hz. Rated power handling according to IEC 268-5 shall be at least 250 watt. Frequency response shall be from 70-20kHz +/- 3 dB. Dispersion shall be 90x90 degree.

The enclosure shall be rectangular in shape with no visible cable terminals and with a 90 degree angle allowing the speaker to be mounted in corners. It shall be manufactured of aluminium with an MDF baffle and shall incorporate integrated mounting points which allow the speaker to be mounted without brackets. Cabinet finish shall be satin white with a metal grille covered with white cloth or black with a metal grille covered with black cloth or aluminium with metal grille covered by grey cloth. Outside dimensions shall be no greater than 502mm (height) x 232mm (width) x 167mm (side) and weight shall be 5,9 kg. The loudspeaker system shall be the Cornered Audio C6TRM.

FREQUENCY RESPONSE



IMPEDANCE



CORNERED Audio ApS
Roskildevej 16A
2620 Albertslund
Denmark

Mail info@cornered.dk
Tel +45 43 66 10 88
Web www.cornered.dk