



| INSTALLATION

SPR Series

Optimal protection in fixed installations is guaranteed with the SPR series 19" racks which are available in different heights and depths. They are constructed using a cold rolled steel frame with a thickness of 2 mm and 1.2 mm plates which is finished in a black (RAL9004) powder coating with fine structure. They come standard with a tempered glass front and steel rear door, both fitted with easy-swing lock. Other present features are removable sides, in depth adjustable 19" profiles, including leveling feet and wheels, ...

- Available from 18 to 42 units in 600 mm and 800 mm depth
- Tempered smokey grey glass front and steel rear door
- Removable sides for easy wiring



SPR618
19" Rack cabinet
18 units
600 mm depth

SPR627
19" Rack cabinet
27 units
600 mm depth

SPR632
19" Rack cabinet
32 units
600 mm depth

SPR832
19" Rack cabinet
32 units
800 mm depth

SPR642
19" Rack cabinet
42 units
600 mm depth

SPR842
19" Rack cabinet
42 units
800 mm depth



Specifications

ARTICLE	DIMENSIONS (H x W x D)	MAX USABLE DEPTH	HEIGHT WITH WHEELS	WEIGHT
SPR618	918 x 600 x 600 mm	540 mm	988 mm	52 Kg
SPR627	1318 x 600 x 600 mm	540 mm	1388 mm	57 Kg
SPR632	1540 x 600 x 600 mm	540 mm	1610 mm	74 Kg
SPR642	1985 x 600 x 600 mm	540 mm	2055 mm	85 Kg
SPR832	1540 x 600 x 800 mm	740 mm	1610 mm	82 Kg
SPR842	1985 x 600 x 800 mm	740 mm	2055 mm	98 Kg

- Easy swing keylock on both doors (incl 4 keys)
- Reversible door position
- In depth adjustable 19" profiles (front & rear)
- Side panels with security key
- Cable entry on top & bottom
- Ventilation grid on top
- 50 mm wheels + leveling feet included
- Punched square holes for use with snap-in cage nuts
- Static load up to 800 Kg

WPR Series

Maximum installation flexibility is guaranteed with the WPR series wall mountable 19" racks. Their flexible structure allows installation at any location while their different heights and depths provide a solution for a wide variation of applications. They are constructed using cold rolled steel frame with a thickness of 1.5 mm and 1.2 mm plates which is finished in a black (RAL9004) powder coating with fine structure. They come standard with a tempered glass front door with wing knob lock. Other present features are removable sides, in depth adjustable 19" profiles, ventilation grid on top panel, ...



- Available from 6 to 12 units in 450 mm and 600 mm depth
- Tempered smokey grey glass front door with wing knob lock
- Removable sides for easy wiring



WPR406
19" Wall rack
6 units
450 mm depth



WPR409
19" Wall rack
9 units
450 mm depth



WPR412
19" Wall rack
12 units
450 mm depth



WPR606
19" Wall rack
6 units
600 mm depth



WPR609
19" Wall rack
9 units
600 mm depth



WPR612
19" Wall rack
12 units
600 mm depth



Equipped With Wing Knob Lock

Specifications

ARTICLE	DIMENSIONS (H x W x D)	MAX USABLE DEPTH	MAX LOAD	WEIGHT
WPR406	368 x 600 x 450 mm	410 mm	60 Kg	18,5 Kg
WPR409	501 x 600 x 450 mm	410 mm	60 Kg	22,3 Kg
WPR412	635 x 600 x 450 mm	410 mm	60 Kg	25,7 Kg
WPR606	368 x 600 x 600 mm	560 mm	60 Kg	20,4 Kg
WPR609	501 x 600 x 600 mm	560 mm	60 Kg	26 Kg
WPR612	635 x 600 x 600 mm	560 mm	60 Kg	30 Kg

- Wing knob lock with 2 keys
- Reversible door position
- In depth adjustable 19" profiles
- Side panels with security key
- Cable entry on top & bottom
- Ventilation grid on top
- Punched square holes for use with snap-in cage nuts
- Static load up to 60 Kg

HPR Series

Maximum installation, connectivity and maintenance ease is guaranteed with the HPR Series racks. These solid constructed double section rack cabinets with a 1.5 mm thick steel frame and 1.2 mm thick plates are finished with a black (RAL9004) powder coating with fine structure. They provide a stable and secure installation while the double section structure allows easy access to the rear side of your equipment. Other present features are removable sides and in depth adjustable 19" profiles providing even greater flexibility.



HPR506
19" Wall rack
6 units
550 mm depth



HPR509
19" Wall rack
9 units
550 mm depth

- Available in 6 and 9 units
- Double section structure allowing easy access to rear side of equipment
- Tempered smokey grey glass front door with wing knob lock
- Double locking connecting both front and rear section
- Removable sides for easy wiring



- Wing knob lock with 2 keys
- Reversible door position
- In depth adjustable 19" profiles
- Side panels with security key
- Cable entry on top & bottom
- Ventilation grid on top
- Punched square holes for use with snap-in cage nuts
- Static load up to 60 Kg



Specifications

ARTICLE	DIMENSIONS (H x W x D)	MAX USABLE DEPTH	MAX LOAD	WEIGHT
HPR506	368 x 600 x 550 mm	410 mm	60 Kg	22,2 Kg
HPR509	501 x 600 x 550 mm	410 mm	60 Kg	26,8 Kg

PR Series

The PR series are professional standard 19" racks, available in different heights from 6 to 27 units. They are constructed of 1.5 mm cold rolled steel finished with a black (RAL9004) powder coating with fine structure. They feature an open front side for direct access and removable rear panel for easy installation and cabling.

- Available from 6 to 27 units
- Open front side for direct access
- Flat down packaging for efficient transportation



PR206
19" Rack cabinet
6 units
500 mm depth

PR209
19" Rack cabinet
9 units
500 mm depth

PR212
19" Rack cabinet
12 units
500 mm depth

PR218
19" Rack cabinet
18 units
500 mm depth

PR227
19" Rack cabinet
27 units
500 mm depth

Specifications

ARTICLE	DIMENSIONS (H x W x D)	MAX USABLE DEPTH	MAX LOAD	WEIGHT
PR206	338 x 540 x 500 mm	475 mm	200 Kg	14,9 Kg
PR209	471 x 540 x 500 mm	475 mm	200 Kg	17,7 Kg
PR212	605 x 540 x 500 mm	475 mm	200 Kg	20,5 Kg
PR218	872 x 540 x 500 mm	475 mm	200 Kg	26 Kg
PR227	1272 x 540 x 500 mm	475 mm	200 Kg	34, Kg

- Removable rear panel for easy installation & cabling
- Integrated ventilation grid and cable entry on rear panel
- Punched square holes for use with snap-in cage nuts
- Rubber feet on bottom



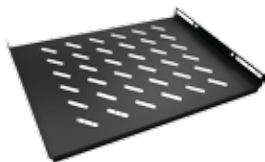
SPR & WPR accessories

SPRxxFS & WPRxxFS

Fixed shelves

The SPRxxFS & WPRxxFS are fixed shelves for assembly inside any SPR or WPR series rack. They can be used for placing or mounting any device which is not standard fitted with 19" mounting ears inside the rack cabinet.

They are constructed using 1,2 mm cold rolled steel and provided with complementary paintwork to the racks.



Specifications

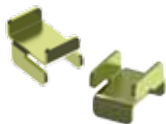
ARTICLE	USE WITH	USABLE DEPTH	DIMENSIONS (H x W x D)	WEIGHT
WPR45FS	WPR4xx	275 mm	490 x 38 x 275 mm	
WPR60FS	WPR6xx	427 mm	490 x 38 x 427 mm	
SPR60FS	SPR6xx	348 mm	475 x 48 x 348 mm	1,8 Kg
SPR80FS	SPR8xx	557 mm	475 x 48 x 557 mm	2,8 Kg

SPR10CS

Rack interconnection slot

The SPR10CS connects two racks together without the use of any bolts or nuts. Every SPR & WPR racks with equal height and removable sides can be connected using these interconnection slots.

This results in a firm connection with a nice clean look. SPR10CS should always be used in sets of 4 pcs.



SPR10DC

Dust covering brush

The SPR10DC is a dust cover brush which is meant to be used for covering the cable inlets which are provided in the SPR & WPR racks. When the racks are installed in industrial environments, through time dust and dirt will enter the racks through all small gaps and openings. In the longer term, this can have a negative influence on the performance of the equipment which is installed in the racks.

The SPR10DC will prevent any dust or dirt from entering the rack cabinets through the cable inlets.



SPRxxSS

Sliding shelves

The SPRxxSS are sliding shelves which can be mounted in any 19" rack with mounting profiles on both front and rear side. They can be used for placing or mounting any device inside the rack cabinet requiring regular access outside the cabinet.

They are constructed using 1,2 mm cold rolled steel and provided with complementary paintwork to the racks. A single rack space (1 unit) is required and a ball bearing mechanism ensures a smooth sliding.



Specifications

ARTICLE	DIMENSIONS (H x W x D)	WEIGHT	USABLE DEPTH	PROFILE DISTANCE
SPR60SS	10 x 482 x 380 mm	3,2 Kg	350 mm	380 - 500 mm
SPR80SS	10 x 482 x 550 mm	4,3 Kg	530 mm	550 - 750 mm

SPRxxLR & WPRxxLR

L-rails

L-rails provide additional support when heavy equipment is installed inside 19" rack cabinets. Horizontal installation underneath the equipment will ensure the weight of installed devices is not only beared by vertical 19" profiles.

They are always sold in pairs and are constructed of 1,2 mm cold rolled steel and provided with complementary paintwork to the racks.



Specifications

ARTICLE	USE WITH	DIMENSIONS (H x W x D)	WEIGHT
WPR45LR	WPR4xx	44 x 38 x 275 mm	0,2 Kg
WPR60LR	WPR6xx	67 x 35 x 320 mm	0,3 Kg
SPR60LR	SPR6xx	67 x 35 x 350 mm	0,55 Kg
SPR80LR	SPR8xx	67 x 35 x 550 mm	0,63 Kg

SPR accessories

SPRxxRF

Roof fan units

The SPRxxRF roof fan units can be used in combination with any SPR series rack. Mounting holes are provided on the inner top side of the cabinet where these units can be assembled.

Using these roof fan units, the rising heated air will be drained through the ventilation grid on top, improving the air circulation throughout the cabinet.

Connection is made using a standard IEC C13 connector which needs to be fed with 240 V AC 50/60 Hz.



Specifications

ARTICLE	USE WITH	DIMENSIONS (H x W x D)	WEIGHT	NOISE	POWER
SPR60RF	SPR6xx	50 x 450 x 363 mm	2,3 Kg	<51 dB	2 x 20 W
SPR80RF	SPR8xx	50 x 450 x 363 mm	3,5 Kg	<57 dB	4 x 20 W

SPRxxPT

Rack plinth

The SPRxxPT are plinths meant for positioning underneath SPR series 19" racks. They raise the rack of the floor and contain holes allowing cables passage through. The construction is made out of 1,5 mm cold rolled steel and finished with black (RAL9004) powder coating with fine structure.



Specifications

ARTICLE	USE WITH	DIMENSIONS (H x W x D)	WEIGHT
SPR60PT	SPR6xx	80 x 600 x 600 mm	6 Kg
SPR80PT	SPR8xx	80 x 600 x 800 mm	7,6 Kg

WPR accessories

WPR10RF

Roof fan

The WPR10RF is a roof fan with dimensions 120 x 120 mm which can be installed to the provided openings on the inner top side of WPR series racks.

Using these fans, rising heated air will be drained through the ventilation opening on top, improving the air circulation throughout the cabinet.

These fans need to be fed with 240 V AC 50/60 Hz and a maximum of two WPR10RF fans can be installed into one WPR rack.



19" Rack drawers

The range of 19" rack drawers consists of three sizes with differences in unit height. Each of these models is available with and without key lock. These rack drawers can be used for storage of any belongings related to the rack mounted equipment, such as: cables, microphones, wireless transmitters, headsets, remote controls, instruction manuals, ... etc

They are constructed of 1,2 mm thick cold rolled steel which is finished in a black (RAL9004) powder coating with fine structured finish which ensures an improved scratch resistance.

RD210L

19" Rack drawer 2 units with lock



RD210
without lock

Outside dimensions (W x H x D): 480 x 88 x 375 mm
Inside dimensions: (W x H x D): 397 x 80 x 350 mm

Incl cylinder lock with 2 keys (RD210L Only)

RD310L

19" Rack drawer 3 units with lock



RD310
without lock

Outside dimensions (W x H x D): 480 x 133 x 375 mm
Inside dimensions: (W x H x D): 397 x 117 x 350 mm

Incl cylinder lock with 2 keys (RD310L Only)

RD410L

19" Rack drawer 4 units with lock



RD410
without lock

Outside dimensions (W x H x D): 480 x 177 x 375 mm
Inside dimensions: (W x H x D): 397 x 160 x 350 mm

Incl cylinder lock with 2 keys (RD410L Only)

19" Power distribution

The PSR 19" power distribution units ensure a clean and reliable solution for providing mains power to connected devices which are installed in a 19" rack cabinet.

The solid construction is made of an aluminum extrusion with a height of 1 unit which is equipped with 19" mounting ears on both sides. Input connection is made using a 2 meters long (3G1,5) fixed mains cable equipped with a shuko (CEE 7/7) plug.

They are available in various models with French (Type E), German (Type F) and IEC C13 (euro) output sockets and come both with or without switch.

PSR108F



PSR108G



PSR108E



Specifications

ARTICLE	DESCRIPTION
PSR108F	19" Power distribution unit – 8 x French socket
PSR108FS	19" Power distribution unit – 8 x French socket with switch
PSR108G	19" Power distribution unit – 8 x German socket
PSR108GS	19" Power distribution unit – 8 x German socket with switch
PSR108E	19" Power distribution unit – 8 x IEC C13 (euro) socket
PSR108ES	19" Power distribution unit – 8 x IEC C13 (euro) socket with switch

19" Fixed shelves

The IS Series are 19" fixed shelves which are constructed of cold rolled steel with a plate thickness of 1,5 mm. They are available in three models for 1 unit, 2 units and 3 units rack mounting with each of them a usable depth of 325 mm. The special cutout structure allows easy and effective rack assembly for any device which is not standard fitted with 19" mounting ears, including wire fixation.

They are all finished with a black (RAL9004) powder coating with fine structured finish which ensures an improved scratch resistance.

IS110

19" standard shelf 1 HE

For non rack mountable appliances

Dimensions (W x H x D): 483 x 43,7 x 331,5 mm

Usable depth: 325 mm



IS210

19" standard shelf 2 HE

For non rack mountable appliances

Dimensions (W x H x D): 483 x 88,1 x 331,5 mm

Usable depth: 325 mm



IS310

19" standard shelf 3 HE

For non rack mountable appliances

Dimensions (W x H x D): 483 x 132,5 x 331,5 mm

Usable depth: 325 mm



Blind panels

The range of blind panels includes several models whereof each model is available in different versions in terms of dimensions and / or assembly possibilities.

All blind panels are made of 1,5 mm thick cold rolled steel with a U-shaped structure which provides improved strength. They are all finished with a black (RAL9004) powder coating with fine structured finish which ensures an improved scratch resistance.

BSF Series

19" Blind panel

The BSF series are standard blind panels available in sizes from 0,33 Unit to 6 Unit. They can be used for covering any open space between 19" devices.



BSF003

19" Blind panel 0,33 Unit

BSF005

19" Blind panel 0,5 Unit

BSF01

19" Blind panel 1 Unit

BSF02

19" Blind panel 2 Unit

BSF03

19" Blind panel 3 Unit

BSF04

19" Blind panel 4 Unit

BSF05

19" Blind panel 5 Unit

BSF06

19" Blind panel 6 Unit

BSV Series

19" Ventilated blind panel

The BSV series are ventilated blind panels available in sizes from 1 Unit to 6 Unit. They can be used for covering any open space between 19" devices, while the air circulation can go through the ventilation openings.



BSV01

19" Ventilated Blind panel 1 Unit

BSV02

19" Ventilated Blind panel 2 Unit

BSV03

19" Ventilated Blind panel 3 Unit

BSV04

19" Ventilated Blind panel 4 Unit

BSV05

19" Ventilated Blind panel 5 Unit

BSV06

19" Ventilated Blind panel 6 Unit

BP Series

19" Blind panel with D-size holes

The BP series are blind panels D-size holes allowing assembly of any matching connector. They exist in 6, 8 and 12 holes versions, each of them available with or without tension relief.



Tension relief for 'T' models

BP106

19" Blind panel with 6 x D-size holes 1 Unit

BP106T

19" Blind panel with 6 x D-size holes and tension relief 1 Unit

BP108

19" Blind panel with 8 x D-size holes 1 Unit

BP108T

19" Blind panel with 8 x D-size holes and tension relief 1 Unit

BP112

19" Blind panel with 12 x D-size holes 1 Unit

BP112T

19" Blind panel with 12 x D-size holes and tension relief 1 Unit

BSB Series

19" Blind panel with brush

The BSB series are 19" blind panels with brush strip which can be installed in any 19" enclosure providing an inlet through which any cable can pass without having any openings or holes in the enclosure.

The brush will bend nicely around the passing cable, preventing any unwanted dust or dirt from entering the cabinet.

The brush hole with dimensions 20 x 420 mm allows XLR sized connectors passing through.

BSB01

19" Blind panel with brush - 1 unit



BSG Series

19" Grill security panel

The BSG series are 19" security panels which are available in 1 unit and 2 units size. They can be installed in front of any 19" device, preventing any unauthorized persons from touching.

The fine grilled structure allows monitoring of indicators such as LED's and displays on the front panel, while providing 23 mm space for extending controls.

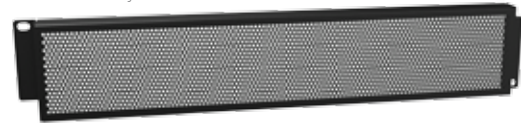
BSG01

19" Grill security cover - 1 unit



BSG02

19" Grill security cover - 2 unit



Cage nuts & bolts

KM500/600(A)

CAGE NUTS

These cage nuts can be used for installation of equipment into any 19" enclosures with both snap-in or sliding profiles. They have a zinc-plated finishing and are sold in sets of 100 pcs.

KM500 : M5 cage nut for 0,5 ~1,6 mm plate thickness

KM600 : M6 cage nut for 0,5 ~1,6 mm plate thickness

KM600A: M6 cage nut for 2,6 ~ 3.5 mm plate thickness



KS500/600

BOLTS

These bolts with phillips head can be used for mounting any equipment to cage nuts or threaded mounting holes. Their black phosphated finish ensures unobtrusively on black appliances while the nylon washer avoids any damages to the devices' paintwork. They are sold in sets of 100 pcs.

KS500 : M5 x 16 mm bolt

KS600 : M6 x 16 mm bolt






CAYMON
professional stands and racks

www.caymon.eu | info@caymon.eu