

## HLV-250

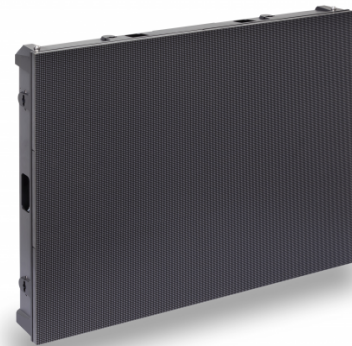
LED module for composite screens 2.50mm pitch

**The Crystal Series** completes the gamma of solutions that Helvia has to offer to the AVL professionals. The need to have a clean video, free from uncomfortable reflections, modular and compact, finds in the LED screens the weapon of choice for contractors and rentals all over the world.

The HLV-250 module is the perfect choice for all those applications that require the best visual intelligibility even at small distances. The Nationstar 2121 LED has become a quality standard for all the professional in the field and grants the reliability and safety that every installation, fixed or not, requires.

The **reduced pitch** and the incredible energetic performances make the HLV-250 a simple and reliable solution.

The **die-cast aluminum frame** reduces the weight of the single module and the **magnetic front inspection** grants access to the system without the need to disassemble the structure, saving both time and money.



## PRODUCT DETAILS

### Key features

LED Module pitch 2.5mm for indoor use

Sturdy and easy to install

Magnetic Front Access

Aluminum frame

### Specifications

<b>Pixel Pitch</b>	2.5mm
<b>LED Type</b>	NAtionstar 2121 3 in 1 RGB
<b>Pixel per cabinet</b>	256 x192
<b>Brightness</b>	600-800 nits/sqm
<b>Module Size</b>	W640mm x H480mm x D58mm
<b>Number of Tiles per Module</b>	2x3
<b>Cabinet Area</b>	0.3sqm
<b>Cabinet Weight</b>	7.5Kg
<b>Recommended viewing distance</b>	>2m
<b>Cabinet Material</b>	Aluminum
<b>Maintenance</b>	Front
<b>Viewing Angle</b>	160°
<b>Color Temperature</b>	2500-10000K
<b>LED Lifetime</b>	>100000 Hrs
<b>Defect Rate</b>	1/10000 pixels
<b>Contrast Ratio</b>	5000:1
<b>Input Power (max)</b>	360W/sqm
<b>Input Power (typical)</b>	120W/sqm