

CORNERED AUDIO C5TRM



FEATURES

5" woofer with very low power compression
 1" horn loaded dome tweeter
 Aluminium cabinet
 90 by 90 degree dispersion

COLOURS

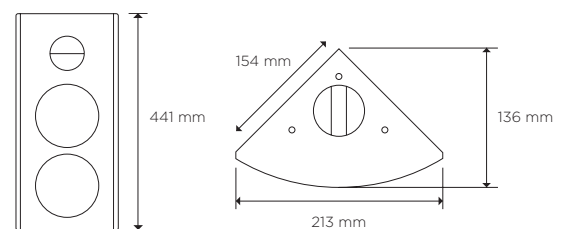


Description

C5TRM is an ultra compact full range speaker with high SPL-to-size ratio. Designed to mount flush in corners or on walls without brackets, the C5TRM is made for medium SPL applications in entertainment venues, meeting rooms and other AV venues where strong full range output with low power compression is needed from a compact speaker.

The drive units have been designed by the finest European manufacturers. The 5 1/4" woofer features a strong magnet system with state-of-the-art-cooling and less than 2 dB power compression after 8 hours of maximum SPL. The 1" horn-loaded dome tweeter offers excellent sensitivity and combines the output of a horn-loaded design with the clarity of a dome tweeter and the dispersion is very uniform. The extruded aluminium cabinet is well dampened and the triangular shape minimises standing waves inside the cabinet. Featuring an advanced passive woofer, the compact speaker delivers excellent bass reproduction down to 50 Hz. With a very high output-to-size ratio, the C5TRM offers excellent performance in demanding applications.

DATA



Power handling, IEC268:	150 watt
Power handling, peak:	600 watt
Sensitivity, 2.83V/1m:	90 dB
Maximum SPL, long term:	112 dB
Maximum SPL, peak:	118 dB
Frequency response:	55-20.000 Hz
Nominal impedance:	8 ohm
Dispersion:	90x90 degree
Weight:	4,8 kg
Measurement:	441x213x154mm

CORNERED AUDIO C5TRM

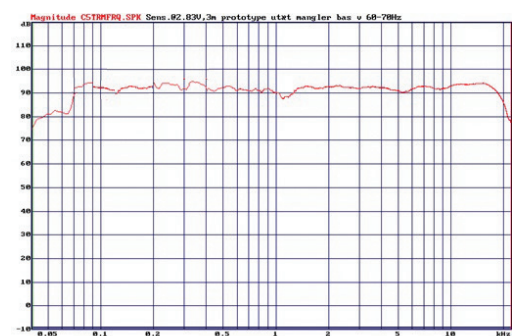
Architectural Specifications

The loudspeaker system shall consist of a 5 ¼" woofer, a 5 ¼" passive woofer for extended bass performance and a 1" horn loaded tweeter with the voice coil dampened with magnetic oil for improved power handling. The second-order and 3rd order frequency dividing network shall utilize polypropylene capacitors to reduce hysteresis and air coils to reduce compression.

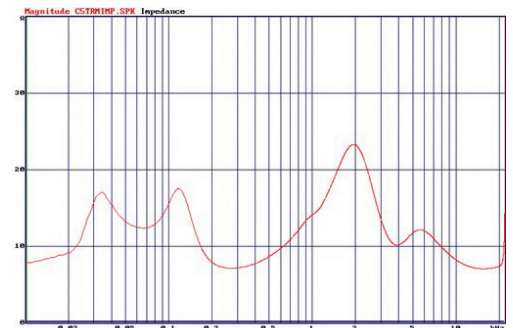
Performance specifications of a typical production shall be as follows: SPL at 1 m with 2.83 V input shall be at least 90 dB. Nominal impedance shall be 8 ohms, with minimum impedance being 7 ohm @ 14kHz. Rated power handling according to IEC 268-5 shall be at least 150 watt. Frequency response shall be from 55-20kHz +/- 3 dB and dispersion shall be 0+ by 90 degree,

The enclosure shall be rectangular in shape with no visible cable terminals and with a 90 degree angle allowing the speaker to be mounted in corners. It shall be manufactured of aluminium with an MDF baffle and shall incorporate integrated mounting points which allow the speaker to be mounted without brackets. Outside dimensions shall be no greater than 441mm (height) x 213mm (width) x 154mm (side) and weight shall be 4,8 kg. The loudspeaker system shall be the Cornered Audio C5TRM.

FREQUENCY RESPONSE



IMPEDANCE



CORNERED Audio ApS
Rosenkæret 13, 2. tv
2860 Søborg
Denmark

info@cornered.dk
+45 43 66 10 88
www.cornered.dk