

ARTcessories™

Creative audio solutions in cool little boxes.

DUAL RDB

Dual Reamping Direct Box



ARTcessories™

DUAL RDB

Dual Reamping Direct Box

The Dual RDB is the ideal interface solution for any application where stereo or dual line level signals from recording interfaces, computers, mixers, iPods, consumer DVD players, consumer HiFi equipment or video machines need to be connected to XLR microphone or 1/4" instrument level inputs. The unit has two high quality isolation transformers that prevent ground loops when connecting various systems together.

The Dual RDB accepts 1/4" TRS and XLR line level inputs and outputs mic or instrument levels. The Dual RDB's variable level controls allow you to vary the volume control at the source rather than in the studio, AV room, audio closet or installation rack. A 20Hz to 20kHz frequency response ensures the Dual RDB will function transparently with any high quality audio source.

Applications:

- Re-amping interface for multiple amps
- Stereo/Dual direct box
- Variable Input pad for mic or instrument inputs
- Stereo Audio/Video interface to low level inputs

Features:

- Dual 1/4" TRS line level inputs
- Dual XLR line level inputs
- Balanced outputs
- Transformer isolated XLR microphone level outputs
- Transformer isolated 1/4" TRS instrument level outputs
- 20 Hz to 20 kHz Frequency Response
- Variable Level Controls that can fully mute
- CH2 source selectable between CH1 or CH2 Input
- CH2 output phase switch

Specifications:

Frequency Response	20 Hz - 20 kHz, $\pm 0.5\text{dB}$ @ +4 dBu
THD	.01% typical @ 1 kHz, +18dBu <.05% @ 100 Hz, +18dBu
Channel Separation	> 80dB (typical)
Input Connections	1/4" TRS balanced, XLR balanced female
Output Connections	1/4" TRS balanced, XLR balanced female
Insertion loss	-20dB @100K load, -25dB @600 Ohm load
Dimensions	1.85 H x 4.6 W x 3.9 D (in) 47 H x 117 W x 99 D (mm)
Weight	0.88 lbs / 0.40 kg

Installation and Operation:

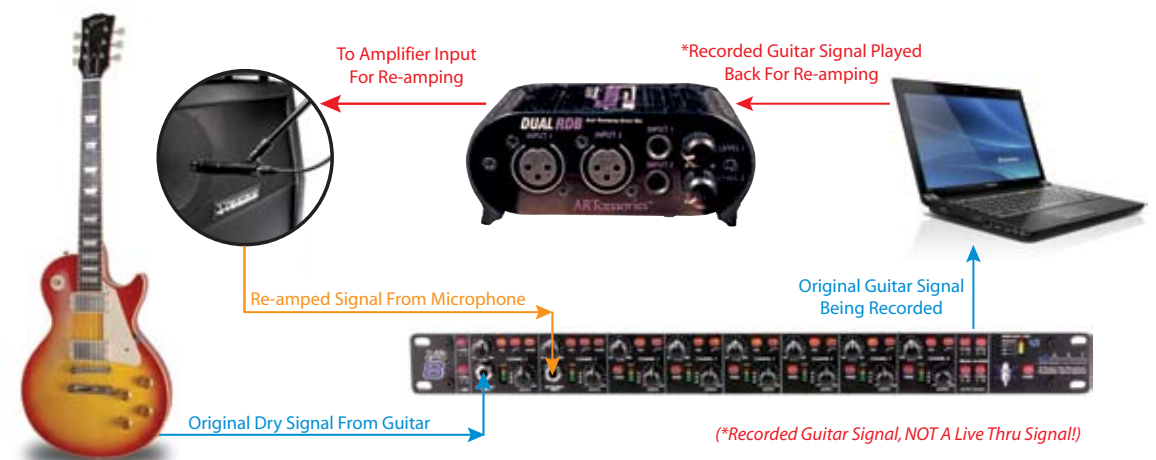
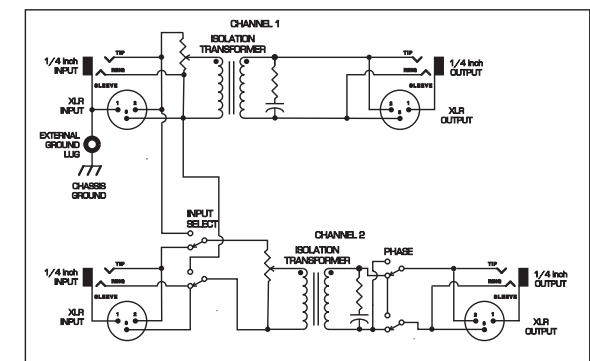
Connect your line level signal to INPUT 1 using either the 1/4" TRS phone jack or XLR Input connector. Connect either the 1/4" jack or XLR of OUTPUT 1 to an instrument or mic input.

For dual operation, connect INPUT 2 and OUTPUT 2 in a similar manner and set the OUTPUT 2 SOURCE switch to Input 2.

If you want to split INPUT 1 into two outputs, set the OUTPUT 2 SOURCE switch to Input 1.

Use the OUTPUT 2 PHASE switch if you need to correct phase error problems elsewhere in the audio system.

Set the LEVEL knobs for best signal strength and clarity.



To see the entire ARTcessories line of solution boxes, visit: www.artproaudio.com
For Customer Service, please email us at: support@artproaudio.com

ARTcessories™ Designed and Distributed by Applied Research & Technology • Made In China • DUALRDB / 08-11

